

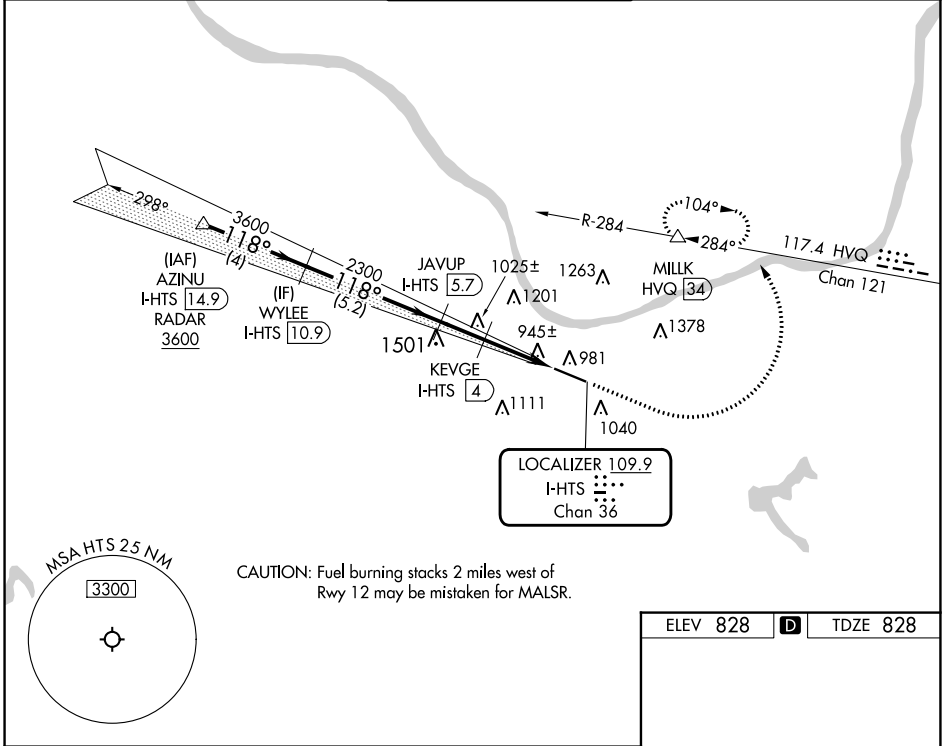
| | | |
|--|------------------------|-----------------|
| LOC/DME I-HTS 109.9 Chan 36 | APP CRS 118° | Rwy Idg 6516 |
| | | TDZE 828 |
| | | Apt Elev 828 |

ILS or LOC RWY 12

TRI-STATE/MILTON J FERGUSON FLD (HTS)

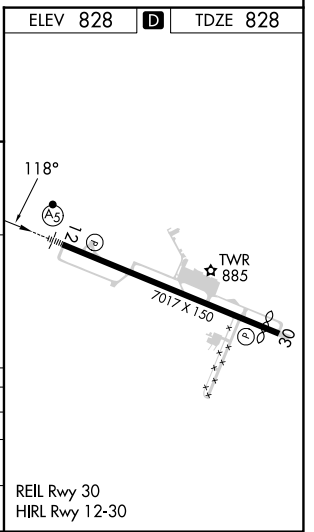
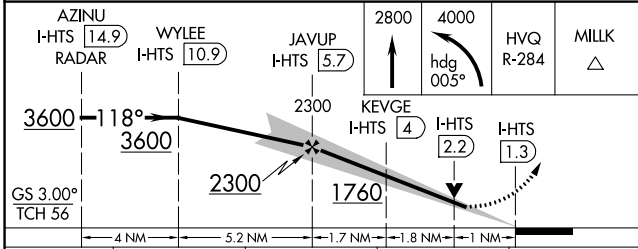
| | | | |
|---|--|-----------|--|
| DME required. RADAR required for procedure entry. | | MALSR | MISSED APPROACH: Climb to 2800 then climbing left turn to 4000 on heading 005° and HVQ VOR/DME R-284 to MILK/HVQ VOR/DME 34 DME and hold, continue to climb-in-hold to 4000. |
| For inop ALS, increase S-LOC 12 Cats C and D visibility to RVR 5500. *RVR 1800 authorized with use of FD or AP or HUD to DA. | | | |

| | | | | |
|----------------------|---|--|-------------------------|---------------------------|
| ATIS 125.2 | HUNTINGTON APP CON 119.75 270.1 | HUNTINGTON TOWER 118.5 270.1 | GND CON 121.9 | CLNC DEL 118.05 |
|----------------------|---|--|-------------------------|---------------------------|



NE-4, 08 AUG 2024 to 05 SEP 2024

NE-4, 08 AUG 2024 to 05 SEP 2024



| CATEGORY | A | B | C | D |
|-------------------|-----------------------|-----------------------|-----------------------|------------------------|
| S-ILS 12* | 1028/24 200 (200-½) | | | |
| S-LOC 12 | 1200/24 | 372 (400-½) | 1200/35 | 372 (400-⅝) |
| C CIRCLING | 1300-1 472 (500-1) | 1380-1 552 (600-1) | 1520-2 692 (700-2) | 1740-3 912 (1000-2) |