

NDB GEY 275	APP CRS 324°	Rwy Idg TDZE Apt Elev	7003 3916 3942
-----------------------	------------------------	-----------------------------	---

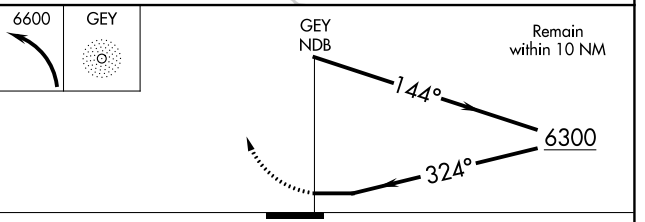
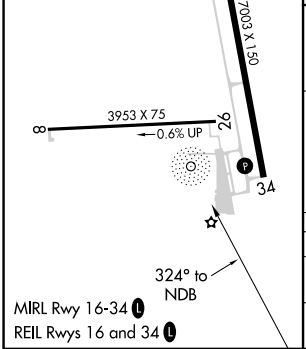
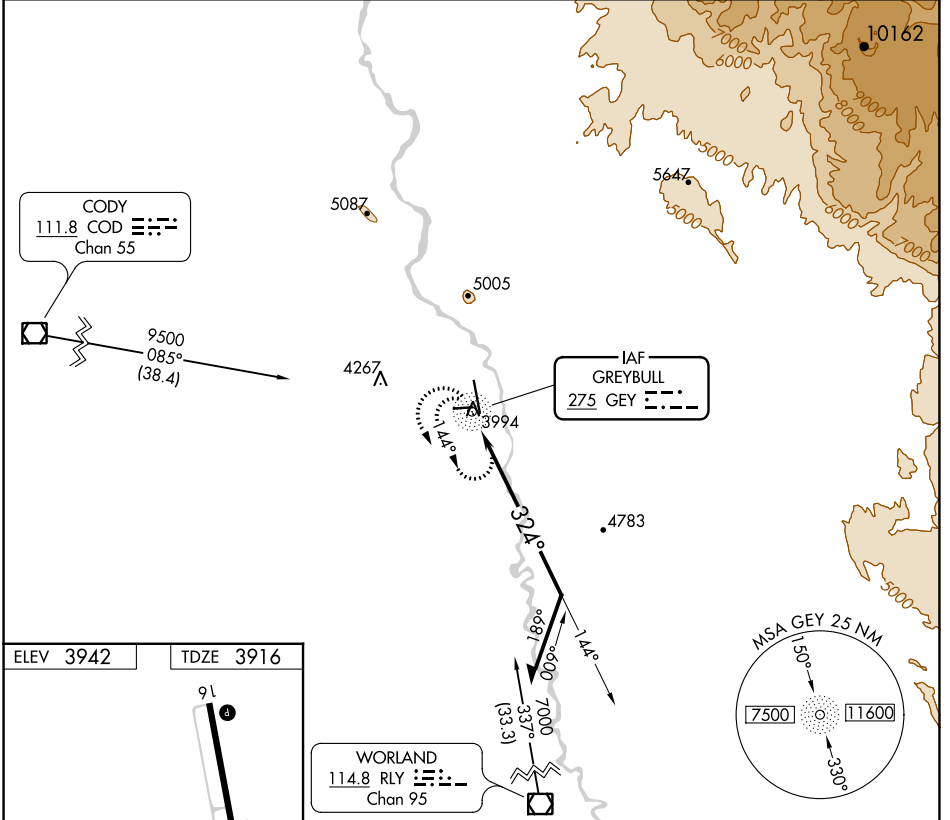
NDB RWY 34

SOUTH BIG HORN COUNTY (GEY)

NA When local altimeter setting not received, use Cowley/Lovell/Byron altimeter setting and increase all MDAs 100 feet.

MISSED APPROACH: Climbing left turn to 6600 in GEY NDB holding pattern.

ASOS 135.325	SALT LAKE CENTER 127.75 351.9	CTAF 122.9
------------------------	---	----------------------



CATEGORY	A	B	C	D
S-34	5240-1¼ 1324 (1400-1¼)	5240-1½ 1324 (1400-1½)	5240-3	1324 (1400-3)
CIRCLING	5240-1¼ 1298 (1300-1¼)	5240-1½ 1298 (1300-1½)	5320-3	5460-3 1518 (1600-3)

NW-1, 18 MAY 2023 to 15 JUN 2023

NW-1, 18 MAY 2023 to 15 JUN 2023