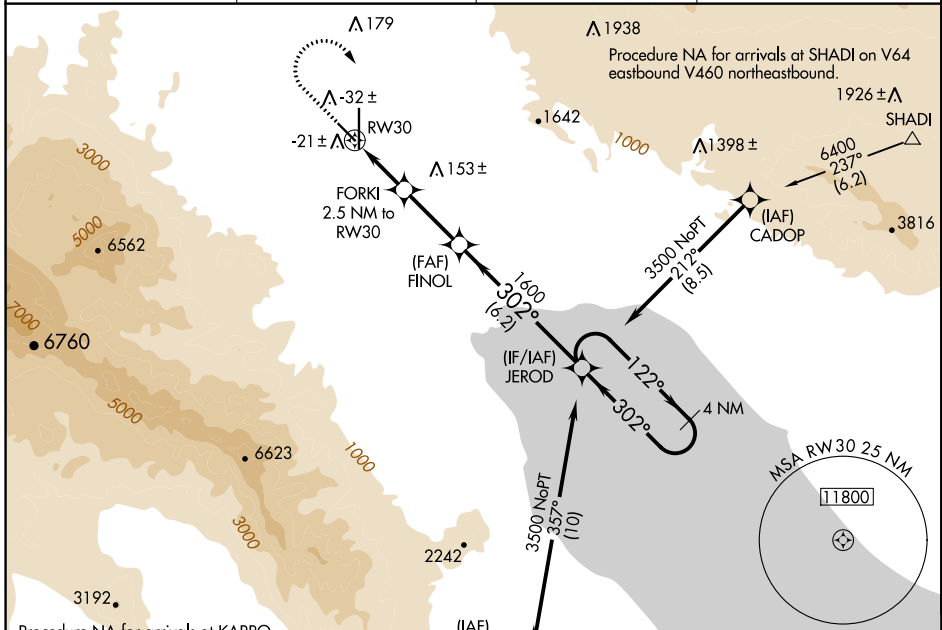


WAAS CH 77941 W30A	APP CRS 302°	Rwy Idg TDZE Apt Elev	4995 -121 -115
--	------------------------	-----------------------------	---

RNAV (GPS) RWY 30

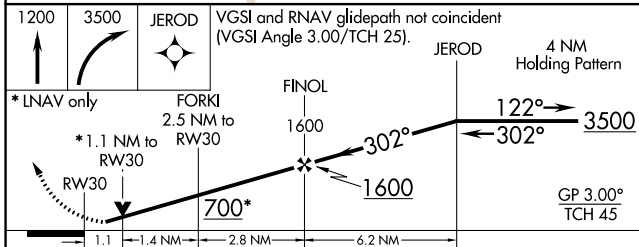
JACQUELINE COCHRAN RGNL (TRM)

RNP APCH.		MISSED APPROACH: (Do not exceed 230K until JEROD) Climb to 1200 then climbing right turn to 3500 direct JEROD and hold.	
<p>▼ ▲ Rwy 30 helicopter visibility reduction below 3/4 SM NA.</p>		ASOS 118.325	SOCAL APP CON 135.275 251.1
		CLNC DEL 120.225	UNICOM 123.0 (CTAF) 0



Procedure NA for arrivals at KARRO on V460 southwestbound.

Procedure NA for arrivals at SHADI on V64 eastbound V460 northeastbound.



1200	3500	JEROD	VGSI and RNAV glidepath not coincident (VGSI Angle 3.00/TCH 25).	
* LNAV only		FORKI 2.5 NM to RW30	FINOL 1600	JEROD 4 NM Holding Pattern
* 1.1 NM to RW30		122° → 3500 ← 302°		
RW30		GP 3.00° TCH 45		
1.1		1.4 NM		2.8 NM
CATEGORY		A	B	C
LPV	DA	129-3/4 250 (300-3/4)		
LNAV MDA		260-1 381 (400-1)		260-1 381 (400-1 1/2)
CIRCLING		320-1 435 (500-1)	340-1 455 (500-1)	460-1 575 (600-1 1/2) 780-3 895 (900-3)

