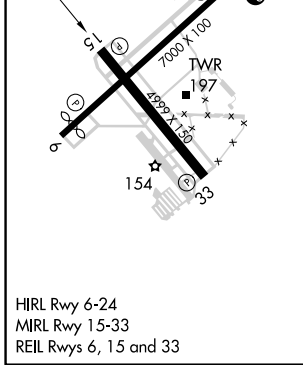
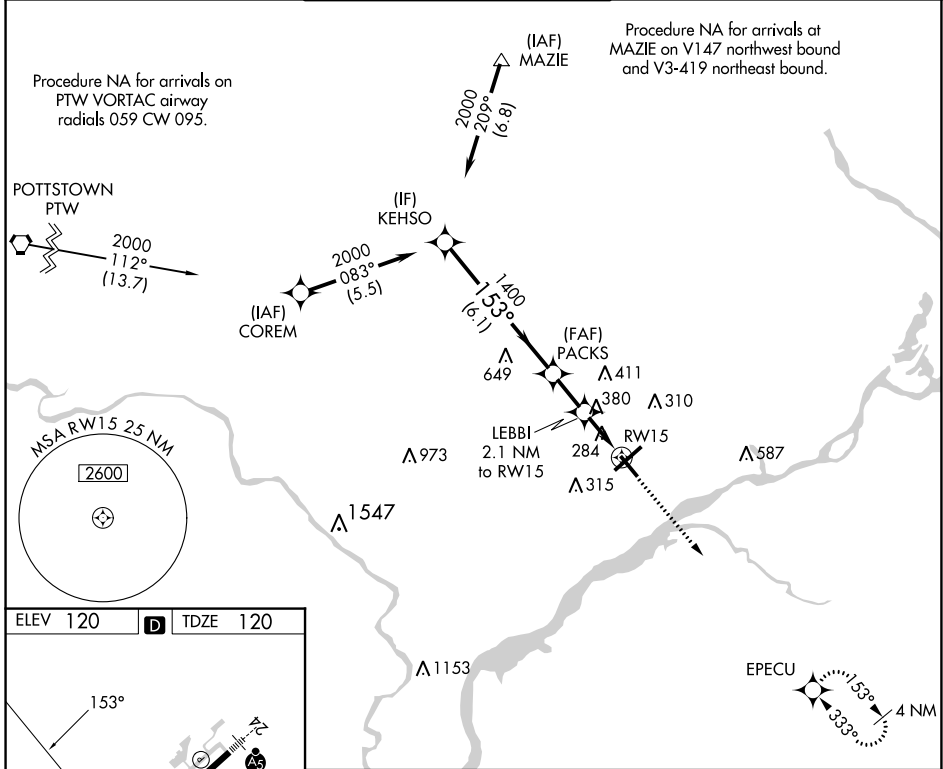


APP CRS	Rwy Idg	4999
153°	TDZE	120
	Apt Elev	120

RNAV (GPS) RWY 15

NORtheast PHILADELPHIA (PNE)

<p>⚠ When local altimeter setting not received, use Philadelphia Intl altimeter setting: increase all MDAs 60 feet and LNAV visibility Cat C/D ¼ SM and Circling visibility Cat C/D ¼ SM. DME/DME RNP-0.3 NA.</p>		<p>MISSED APPROACH: Climb to 2000 direct EPECU and hold.</p>			
<p>ATIS 121.15</p>	<p>PHILADELPHIA APP CON 123.8 291.7</p>	<p>NORtheast PHILADELPHIA TOWER * 126.9 (CTAF) 278.8</p>	<p>GND CON 121.7</p>	<p>CLNC DEL 127.25</p>	<p>UNICOM 122.95</p>



<p>KEHSO</p>		<p>PACKS</p>		<p>LEBBI 2.1 NM to RW15</p>		<p>2000</p>	<p>EPECU</p>
<p>2000</p>		<p>153°</p>		<p>3.00° TCH 39</p>		<p>1400</p>	
<p>820</p>		<p>1400</p>		<p>820</p>		<p>RW15</p>	
<p>6.1 NM</p>		<p>1.8 NM</p>		<p>2.1 NM</p>		<p>4 NM</p>	
CATEGORY	A	B	C	D			
LNAV MDA	660-1	540 (600-1)	660-1½	540 (600-1½)			
CIRCLING	700-1	580 (600-1)	720-1½	780-2			
			600 (600-1½)	660 (700-2)			

NE-4, 31 OCT 2024 to 28 NOV 2024

NE-4, 31 OCT 2024 to 28 NOV 2024