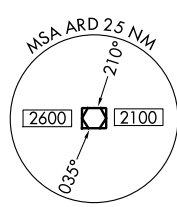
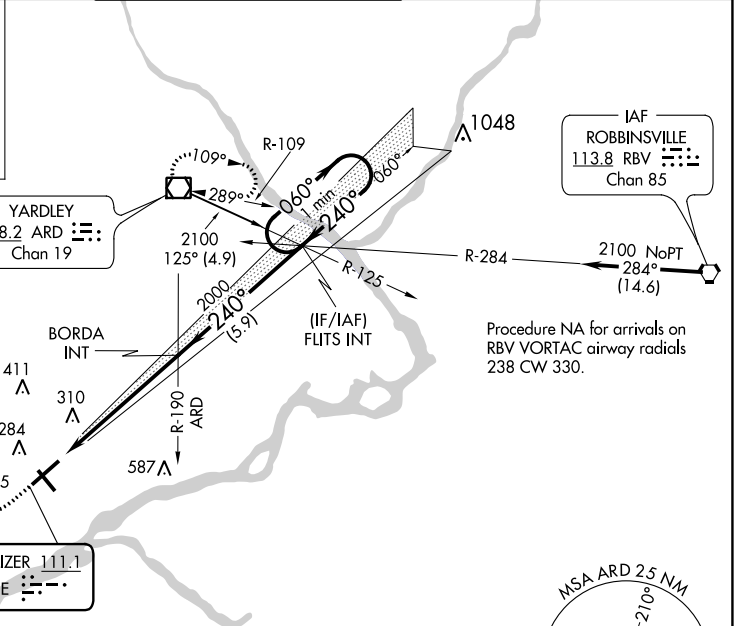


LOC I-PNE <b>111.1</b>	APP CRS <b>240°</b>	Rwy Idg TDZE Apt Elev	<b>6102</b> <b>115</b> <b>120</b>
---------------------------	------------------------	-----------------------------	---

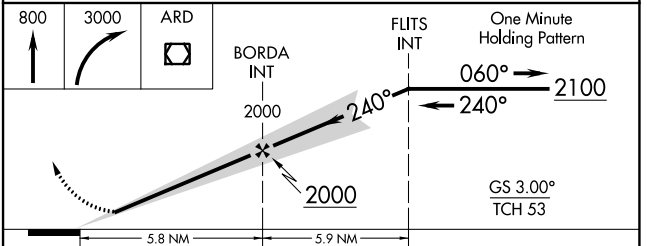
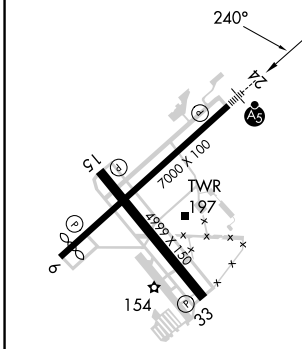
**ILS or LOC RWY 24**  
NORtheast PHILADELPHIA (PNE)

MISSED APPROACH: Climb to 800 then climbing right turn to 3000 direct ARD VOR/DME and hold.					
ATIS <b>121.15</b>	PHILADELPHIA APP CON <b>123.8 291.7</b>	NORtheast PHILADELPHIA TOWER * <b>126.9 (CTAF) 0 278.8</b>	GND CON <b>121.7</b>	CLNC DEL <b>127.25</b>	UNICOM <b>122.95</b>

ALTERNATE MISSED APCH FIX  
POTTSTOWN  
PTW  
116.5  
Chan 112  
R-290-110°  
290°



ELEV 120	<b>D</b>	TDZE 115
----------	----------	----------



	HIRL Rwy 6-24				
	MIRL Rwy 15-33				
	REIL Rwy 6, 15 and 33				
	FAF to MAP 5.8 NM				
Knots	60	90	120	150	180
Min:Sec	5:48	3:52	2:54	2:19	1:56
<input checked="" type="checkbox"/> CIRCLING	700-1 580 (600-1)		720-1½ 600 (600-1½)		780-2 660 (700-2)

NE-4, 31 OCT 2024 to 28 NOV 2024

NE-4, 31 OCT 2024 to 28 NOV 2024