

WAAS CH 82316	APP CRS 165°	Rwy Idg TDZE Apt Elev	5070 15 15
-------------------------	------------------------	-----------------------------	---------------------------------------

RNAV (GPS) RWY 16

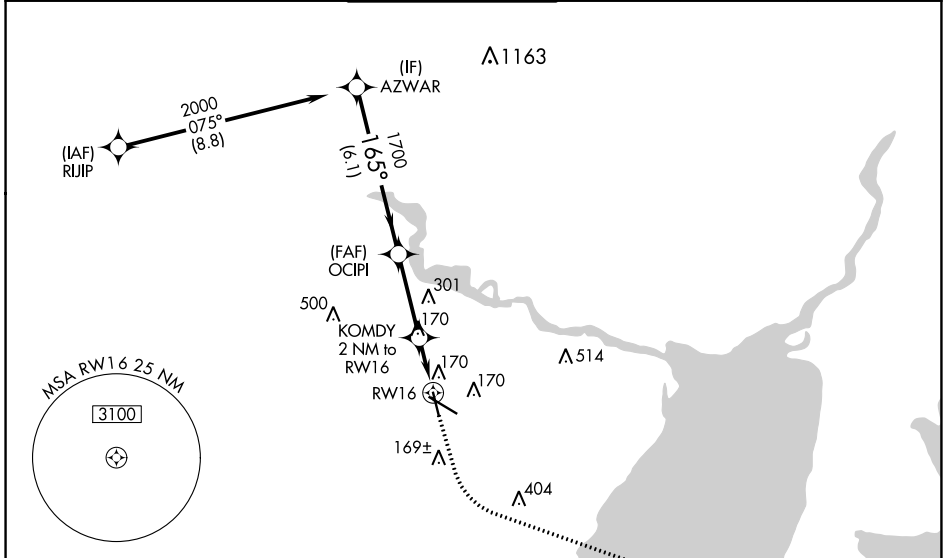
JACK BROOKS RGNL (BPT)

RNP APCH - GPS.

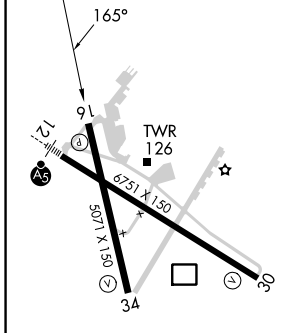
▼ For uncompensated Baro-VNAV systems, LNAV/VNAV NA below -4°C or above 54°C.
 ▲ Baro-VNAV and VDP NA when using Orange County altimeter setting. Rwy 16 helicopter visibility reduction below 3/4 SM NA. When local altimeter setting not received, use Orange County altimeter setting: increase LPV DA to 307 feet and all visibilities 1/2 SM; increase LNAV/VNAV DA to 363 feet and all visibilities 1/2 SM; increase all MDAs 40 feet and LNAV visibility Cat C/D/E 1/4 SM.

MISSED APPROACH: Climb to 500 then climbing left turn to 3000 direct MARSAs and hold.

ATIS 126.3	HOUSTON APP CON 121.3 377.1	BEAUMONT TOWER * 119.5 (CTAF) 0	GND CON 124.85	CLNC DEL 118.3	UNICOM 122.95
----------------------	---------------------------------------	---	--------------------------	--------------------------	-------------------------



ELEV 15	D	TDZE 15
---------	----------	---------



REIL Rwy 16, 30 and 34	0
HIRL Rwy 12-30, 16-34	0

	500	3000	MARSA		
	↑	↶	△		
AZWAR	OCIPI	KOMDY			
2000	1700	2 NM to RWY 16			
	165°	1.1 NM to RWY 16			
GP 3.00°	1700	700			
TCH 53					
	6.1 NM	3.1 NM	0.9 NM 1.1 NM		
CATEGORY	A	B	C	D	E
LPV DA		275-3/4	260 (300-3/4)		
LNAV/VNAV DA		331-7/8	316 (400-7/8)		
LNAV MDA	420-1	405 (500-1)	420-1 1/8	405 (500-1 1/8)	

SC-5, 03 OCT 2024 to 31 OCT 2024

SC-5, 03 OCT 2024 to 31 OCT 2024