

WAAS CH 99715 W12A	APP CRS 120°	Rwy Idg TDZE Apt Elev	6508 15 15
--	------------------------	-----------------------------	---------------------------------------

RNAV (GPS) RWY 12

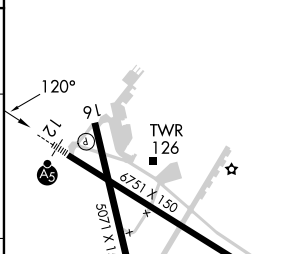
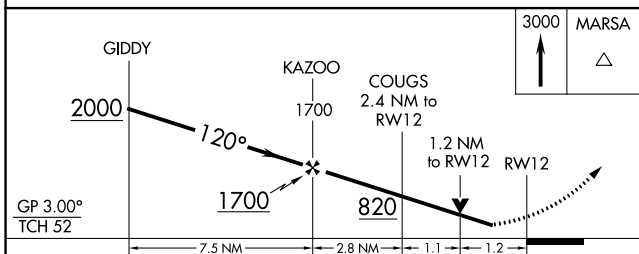
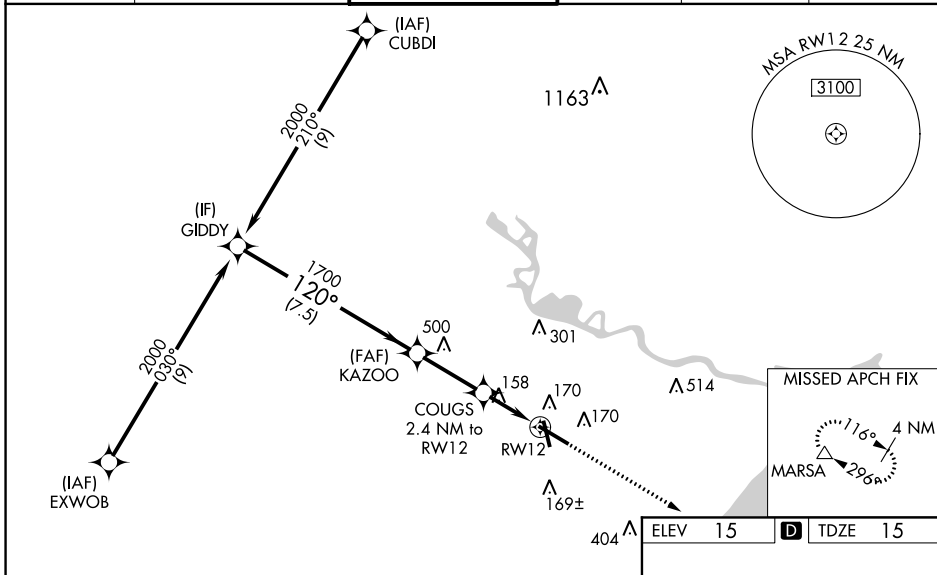
JACK BROOKS RGNL (BPT')

RNP APCH - GPS.

⚠ For uncompensated Baro-VNAV systems, LNAV/VNAV NA below -4°C or above 54°C. Baro-VNAV and VDP NA when using Orange County altimeter setting. Rwy 12 helicopter visibility reduction below RVR 4000 NA. When local altimeter setting not received, use Orange altimeter setting; increase LPV DA to 297 feet; increase LNAV/VNAV DA to 464 feet and all visibilities to RVR 4500; increase all MDAs 40 feet and LNAV visibility Cat C/D/E to RVR 5000 and Circling visibility Cat E ¼ SM. Inop table does not apply to LPV. For inop ALS, increase LNAV/VNAV visibility all Cats to RVR 6000; LNAV Cats A/B to RVR 5500, Cat E to 1¾ SM. For inop ALS when using Orange County altimeter setting, increase LPV all Cats visibility to RVR 4500, LNAV/VNAV visibility Cat E to 1¾ SM; and increase LNAV visibility Cats A/B to RVR 5500, Cats C/D/E 1¾ SM.

MALSR MISSED APPROACH:
Climb to 3000 direct
MARSA and hold.

ATIS 126.3	HOUSTON APP CON 121.3 377.1	BEAUMONT TOWER* 119.5 (CTAF) 0	GND CON 124.85	CLNC DEL 118.3	UNICOM 122.95
----------------------	---------------------------------------	---	--------------------------	--------------------------	-------------------------



CATEGORY	A	B	C	D	E
LPV DA		265/40	250 (300-¾)		
LNAV/VNAV DA		432/40	417 (500-¾)		
LNAV MDA	460/40	445 (500-¾)	460/45	445 (500-¾)	
CIRCLING	480-1	465 (500-1)	640-1¾ 625 (700-1¾)	760-2½ 745 (800-2½)	820-2¾ 805 (900-2¾)

REIL Rwy 16, 30 and 34 **0**
 HIRL Rwy 12-30, 16-34 **0**

SC-5, 31 OCT 2024 to 28 NOV 2024

SC-5, 31 OCT 2024 to 28 NOV 2024