

VORTAC SPI <b>112.7</b> Chan <b>74</b>	APP CRS <b>134°</b>	Rwy Idg <b>7217</b> TDZE <b>592</b> Apt Elev <b>598</b>
--	------------------------	---

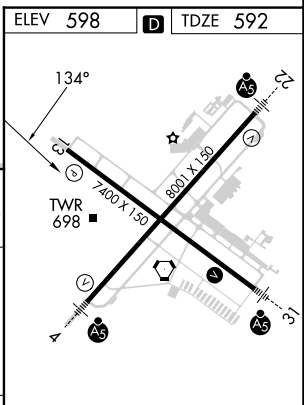
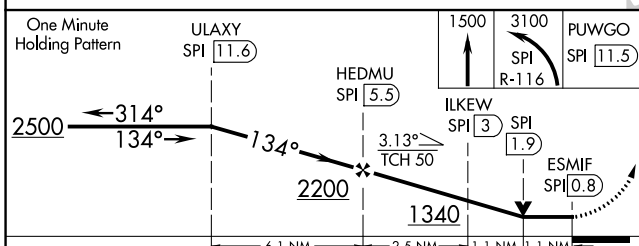
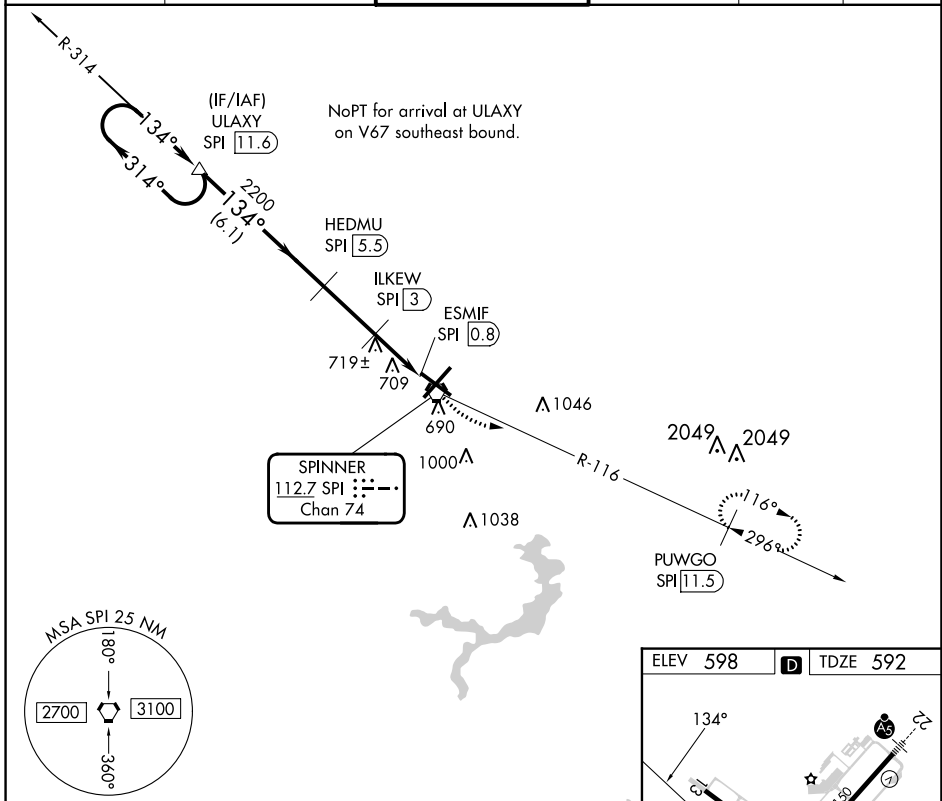
# VOR/DME RWY 13

ABRAHAM LINCOLN CAPITAL (SPI)

**⚠️ ASR** Helicopter visibility reduction below ¾ SM NA. When local altimeter setting not received, use Lincoln altimeter setting: increase all MDA 60 feet and S-13 and Circling Cat C and D visibility ¼ SM. VDP NA when using Lincoln altimeter setting.

MISSED APPROACH: Climb to 1500 then climbing left turn to 3100 via SPI VORTAC R-116 to PUWGO/SPI 11.5 DME and hold.

ATIS <b>127.65 270.1</b>	SAINT LOUIS APP CON * <b>126.15 323.0</b>	SPRINGFIELD TOWER * <b>121.3 (CTAF) 257.8</b>	GND CON <b>121.9 348.6</b>	CLNC DEL <b>121.7</b>	UNICOM <b>122.95</b>
-----------------------------	--	--	-------------------------------	--------------------------	-------------------------



CATEGORY	A	B	C	D
S-13	980-1	388 (400-1)	980-1 1/8	388 (400-1 1/8)
<b>C</b> CIRCLING	1040-1 442 (500-1)	1100-1 502 (600-1)	1360-2 1/4 762 (800-2 1/4)	1380-2 1/2 782 (800-2 1/2)

REIL Rwy 13 **Ⓛ**  
HIRL Rwys 4-22 and 13-31 **Ⓛ**

EC-3, 31 OCT 2024 to 28 NOV 2024

EC-3, 31 OCT 2024 to 28 NOV 2024