

APP CRS	Rwy Idg	3570
324°	TDZE	429
	Apt Elev	435

RNAV (GPS) RWY 32

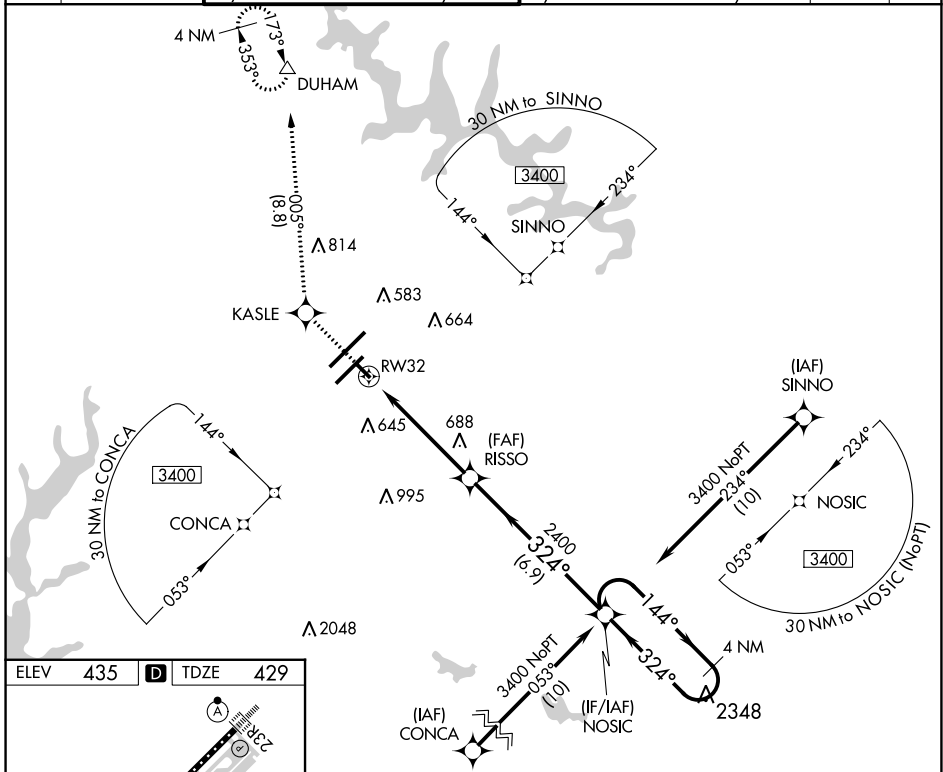
RALEIGH-DURHAM INTL (RDU)

RNP APCH.

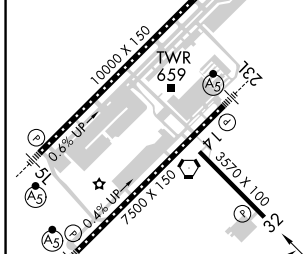
▼ Rwy 32 helicopter visibility reduction below 3/4 SM NA.
Baro-VNAV NA below -15°C (5°F) or above 48°C (118°F).

MISSED APPROACH: Climb to 2200 direct KASLE and on track 005° to DUHAM and hold.

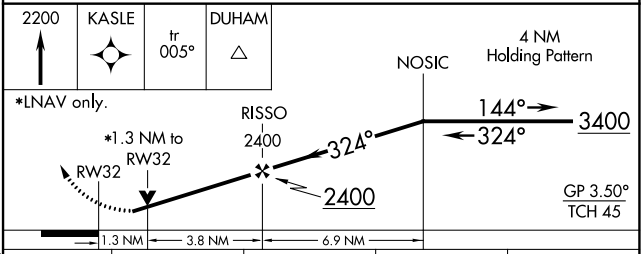
D-ATIS	RALEIGH APP CON	(EAST) RALEIGH TOWER	(WEST) RALEIGH TOWER	(EAST) GND CON	(WEST) GND CON	CLNC DEL	CPDLC
123.8	127.675 307.9	127.45 257.8 Rwys 5R-23L and 14-32	119.3 257.8 Rwy 5L-23R	121.9 348.6 Rwys 5R-23L and 14-32	121.7 348.6 Rwy 5L-23R	120.1	



ELEV	435	D	TDZE	429
------	------------	----------	------	------------



REIL Rwy 32
MIRL Rwy 14-32
HIRL Rwys 5R-23L and 5L-23R
TDZ/CL Rwys 23R, 23L and 5L



CATEGORY	A	B	C	D
LNAV/VNAV	DA	820-1¼ 391 (400-1¼)		NA
LNAV MDA	1000-1	571 (600-1)	1000-1½ 571 (600-1½)	NA
C CIRCLING	1000-1¼	565 (600-1¼)	1040-1¾ 605 (700-1¾)	NA

SE-2, 03 OCT 2024 to 31 OCT 2024

SE-2, 03 OCT 2024 to 31 OCT 2024