

LOC/DME I-DMP <b>111.7</b> Chan <b>54</b>	APP CRS <b>234°</b>	Rwy Idg TDZE Apt Elev <b>10000</b> <b>409</b> <b>435</b>
---	------------------------	---

# ILS or LOC RWY 23R

RALEIGH-DURHAM INTL (RDU)

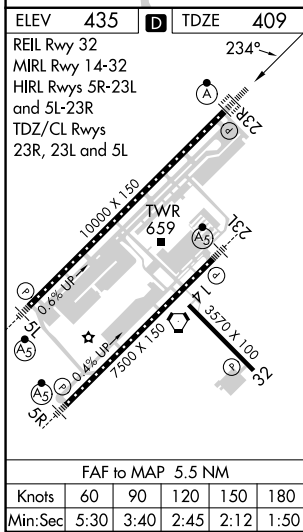
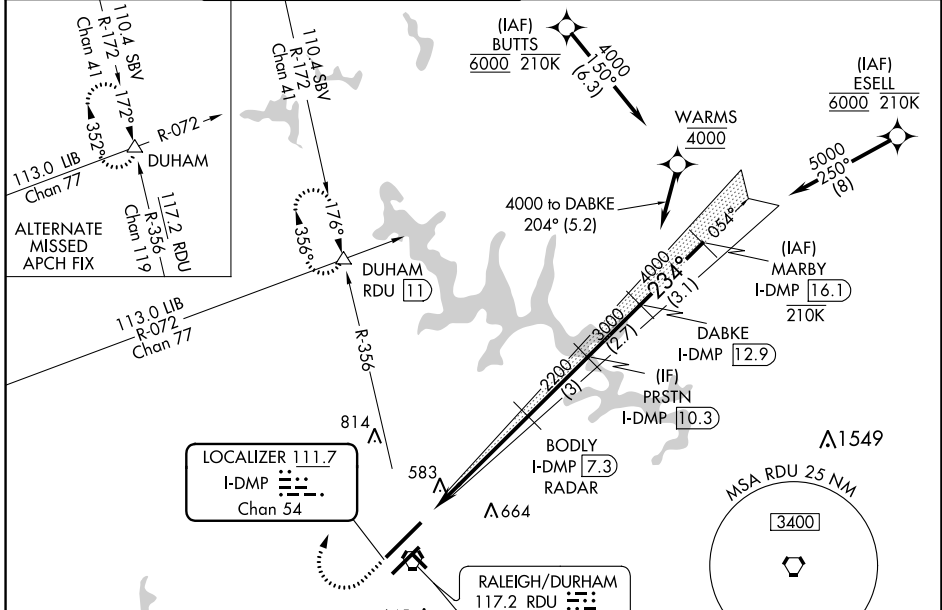
RNAV 1-DME/DME/IRU or GPS or RADAR required for procedure entry. RADAR or DME required for LOC only.

Simultaneous approach authorized. For inop ALS increase S-LOC 23R Cat C/D visibility to 1/2 SM.

ALSF-2

MISSED APPROACH: Climb to 1000 then climbing right turn to 2200 on RDU VORTAC R-356 to DUHAM INT/RDU 11 DME and hold.

D-ATIS <b>123.8</b>	RALEIGH APP CON <b>127.675 307.9</b>	(EAST) RALEIGH TOWER <b>127.45 257.8</b> Rwys 5R-23L and 14-32	(WEST) <b>119.3 257.8</b> Rwy 5L-23R	(EAST) GND CON <b>121.9 348.6</b> Rwys 5R-23L and 14-32	(WEST) <b>121.7 348.6</b> Rwy 5L-23R	CLNC DEL <b>120.1</b>	CPDLC
------------------------	---	--	--	---	--	--------------------------	-------



ELEV 435	TDZE 409	1000 2200 RDU R-356 DUHAM VGSI and ILS glidepath not coincident (VGSI Angle 3.00/TCH 69).			
*LOC only.		BODY I-DMP (7.3) RADAR	PRSTN I-DMP (10.3)	DABKE I-DMP (12.9)	MARBY I-DMP (16.1)
I-DMP (1.8) *I-DMP (3.4) 2200 3000 4000 5000		GS 3.00° TCH 55			
1.6 NM 3.9 NM 3 NM 2.7 NM 3.1 NM					
CATEGORY	A	B	C	D	
S-ILS 23R	609/18 200 (200-1/2)				
S-LOC 23R	980/24	571 (600-1/2)	980-1 1/4	571 (600-1 1/4)	
CIRCLING	980-1	545 (600-1)	1020-1 1/2	1180-2 1/2	
			585 (600-1 1/2)	745 (800-2 1/2)	

SE-2, 03 OCT 2024 to 31 OCT 2024

SE-2, 03 OCT 2024 to 31 OCT 2024