

WAAS CH <b>97600</b> <b>W08A</b>	APP CRS <b>084°</b>	Rwy Ldg TDZE <b>1440</b> Apt Elev <b>1442</b>	<b>6511</b>
--	------------------------	---	-------------

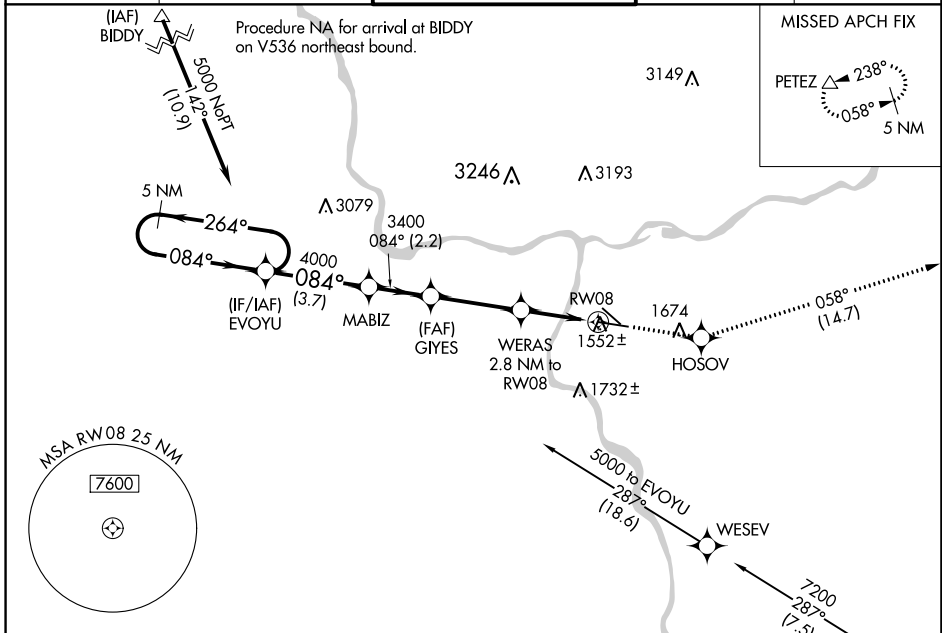
# RNAV (GPS) Y RWY 8

LEWISTON/NEZ PERCE COUNTY (LWS)

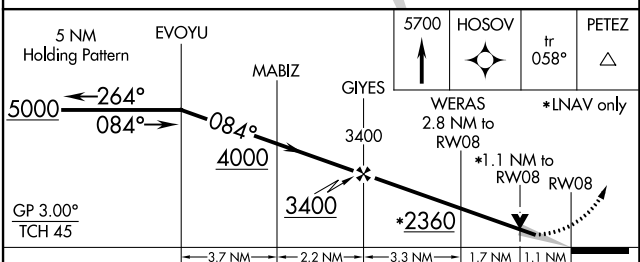
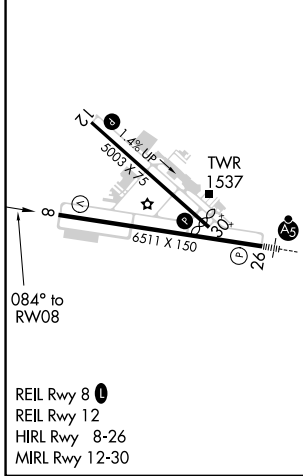
**⚠** For uncompensated Baro-VNAV systems, LNAV/VNAV NA below -1.4°C (7°F) or above 34°C (93°F). DME/DME RNP-0.3 NA.

**MISSED APPROACH:** Climb to 5700 direct HOSOVO and on track 058° to PETEZ and hold, continue climb-in-hold to 5700.

ASOS <b>135.575</b>	SEATTLE CENTER <b>123.95 290.55</b>	LEWISTON TOWER ★ <b>119.4 (CTAF) 0 318.8</b>	GND CON <b>121.9</b>	UNICOM <b>122.95</b>
------------------------	--	---	-------------------------	-------------------------



ELEV <b>1442</b>	<b>D</b>	TDZE <b>1440</b>
------------------	----------	------------------



CATEGORY	A	B	C	D
LPV DA	1690-3/4 250 (300-3/4)			
LNAV/VNAV DA	1736-1 296 (300-1)			
LNAV MDA	1820-1	380 (400-1)	1820-1 1/8	380 (400-1 1/8)
CIRCLING	2000-1	558 (600-1)	2280-2 1/2 838 (900-2 1/2)	2500-3 1058 (1100-3)

NW-1, 26 JAN 2023 to 23 FEB 2023

NW-1, 26 JAN 2023 to 23 FEB 2023