

APP CRS 084°	Rwy Idg 6511
	TDZE 1440
	Apt Elev 1442

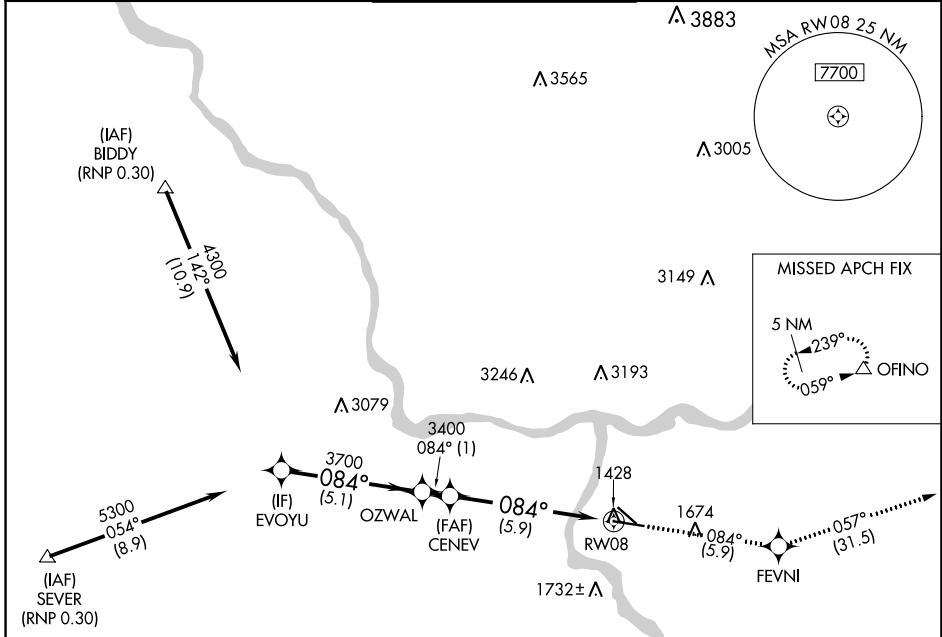
RNAV (RNP) Z RWY 8

LEWISTON/NEZ PERCE COUNTY (LWS)

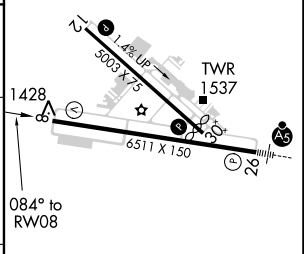
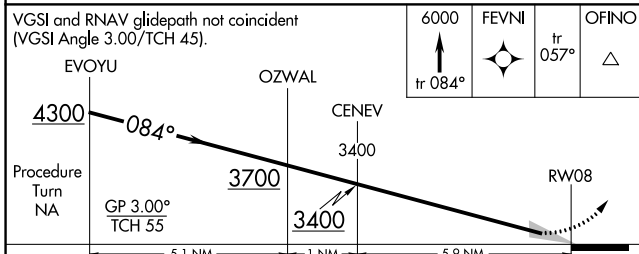
GPS required. For uncompensated Baro-VNAV systems, procedure NA below -16°C (3°F) or above 46°C (115°F). When VGSI inop, procedure NA at night.

MISSED APPROACH: Climb to 6000 via track 084° to FEVNI and via track 057° to OFINO and hold.

ASOS 135.575	SEATTLE CENTER 123.95 290.55	LEWISTON TOWER ★ 119.4 (CTAF) 0 318.8	GND CON 121.9	UNICOM 122.95
------------------------	--	---	-------------------------	-------------------------



ELEV 1442	TDZE 1440
Procedure NA for arrivals at SEVER via V187 westbound.	



VGSI and RNAV glidepath not coincident (VGSI Angle 3.00/TCH 45).	6000 tr 084°	FEVNI tr 057°	OFINO	
CATEGORY	A	B	C	D
RNP 0.30 DA	1752-1 312 (400-1)			

AUTHORIZATION REQUIRED

REIL Rwy 8
REIL Rwy 12
HIRL Rwy 8-26
MIRL Rwy 12-30

NW-1, 26 JAN 2023 to 23 FEB 2023

NW-1, 26 JAN 2023 to 23 FEB 2023