

RNAV (RNP) Z RWY 12

LEWISTON/NEZ PERCE COUNTY (LWS)

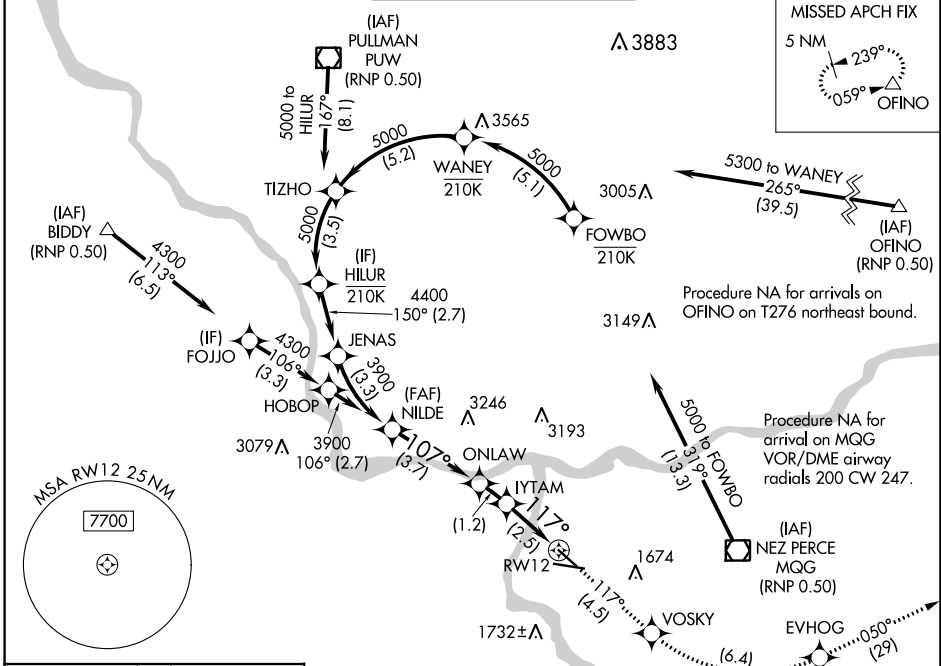
APP CRS	Rwy Idg	4750
117°	TDZE	1417
	Apt Elev	1442

RNP AR APCH-GPS.

▼ For uncompensated Baro-VNAV systems, procedure NA below -12°C or above 54°C.

MISSED APPROACH: Climb to 6000 on track 117° to VOSKY then left turn 6000 to EVHOG and on track 050° to OFINO and hold.
 *Missed approach requires minium climb of 260 feet per NM to 3400.

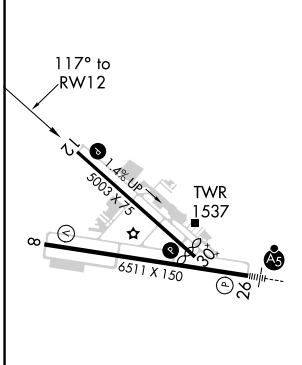
ASOS 135.575	SEATTLE CENTER 123.95 290.55	LEWISTON TOWER ★ 119.4 (CTAF) 0 318.8	GND CON 121.9	UNICOM 122.95
------------------------	--	---	-------------------------	-------------------------



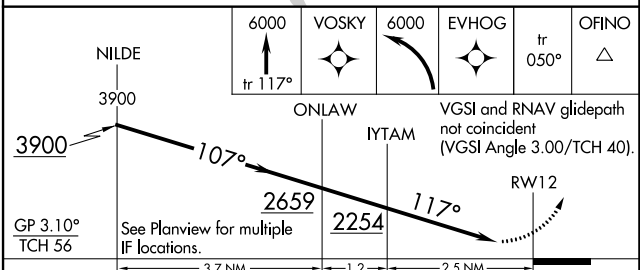
NW-1, 26 JAN 2023 to 23 FEB 2023

NW-1, 26 JAN 2023 to 23 FEB 2023

ELEV 1442	D	TDZE 1417
------------------	----------	------------------



- REIL Rwy 8
- REIL Rwy 12
- HIRL Rwy 8-26
- MIRL Rwy 12-30



GP 3.10°	See Planview for multiple IF locations.			
TCH 56				
CATEGORY	A	B	C	D
RNP 0.30 DA*	1685-7 ⁷ / ₈		268 (300-7 ⁷ / ₈)	
RNP 0.30 DA	1889-1 ³ / ₈		472 (500-1 ³ / ₈)	

AUTHORIZATION REQUIRED