

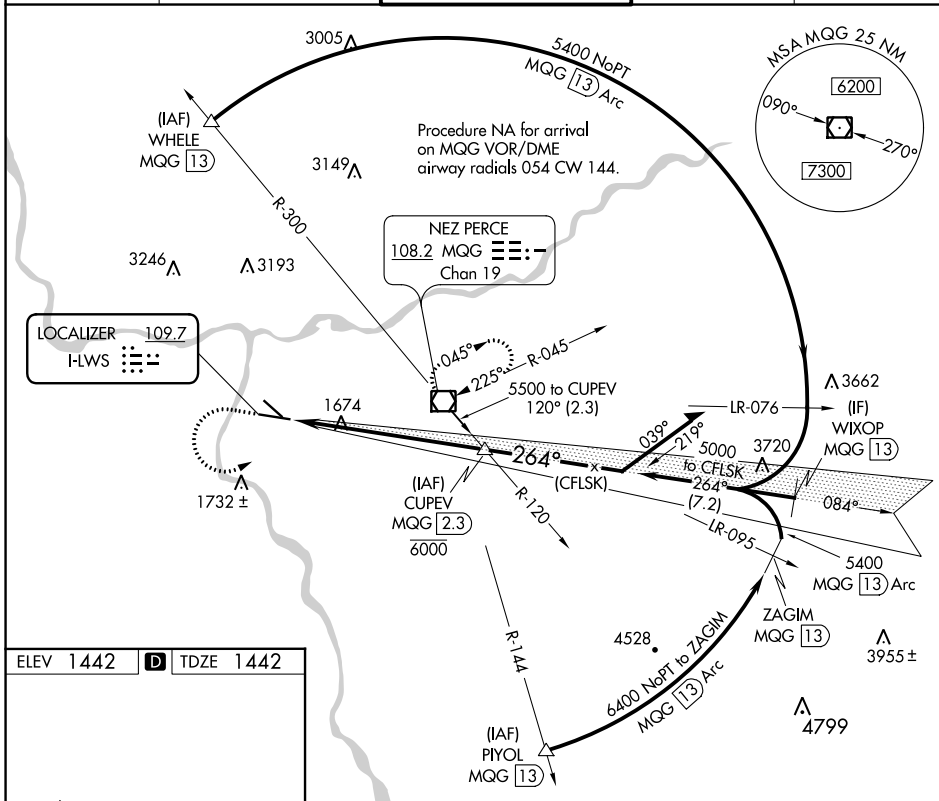
LOC I-LWS 109.7	APP CRS 264°	Rwy Idg TDZE Apt Elev	6511 1442 1442
---------------------------	------------------------	-----------------------------	---

ILS RWY 26

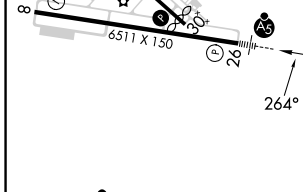
LEWISTON/NEZ PERCE COUNTY (LWS)

<p>▼ When local altimeter setting not received, procedure NA. Autopilot coupled approach NA below 2500.</p>	<p>MALSR</p>	<p>MISSED APPROACH: Climb to 3000 then climbing left turn to 5300 direct MQG VOR/DME and hold, continue climb-in-hold to 5300.</p>
--	--------------	--

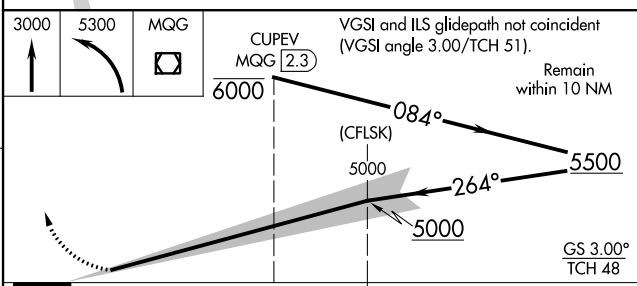
ASOS 135.575	SEATTLE CENTER 123.95 290.55	LEWISTON TOWER ★ 119.4 (CTAF) 0 318.8	GND CON 121.9	UNICOM 122.95
------------------------	--	---	-------------------------	-------------------------



ELEV 1442	D	TDZE 1442
-----------	----------	-----------



REIL Rwy 8
REIL RWY 12
HIRL Rwy 8-26
MIRL Rwy 12-30



CATEGORY	A	B	C	D
S-ILS 26	1642-½ 200 (200-½)			

NW-1, 26 JAN 2023 to 23 FEB 2023

NW-1, 26 JAN 2023 to 23 FEB 2023