

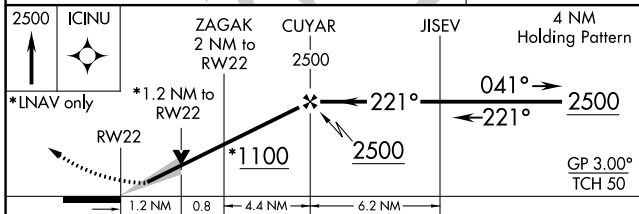
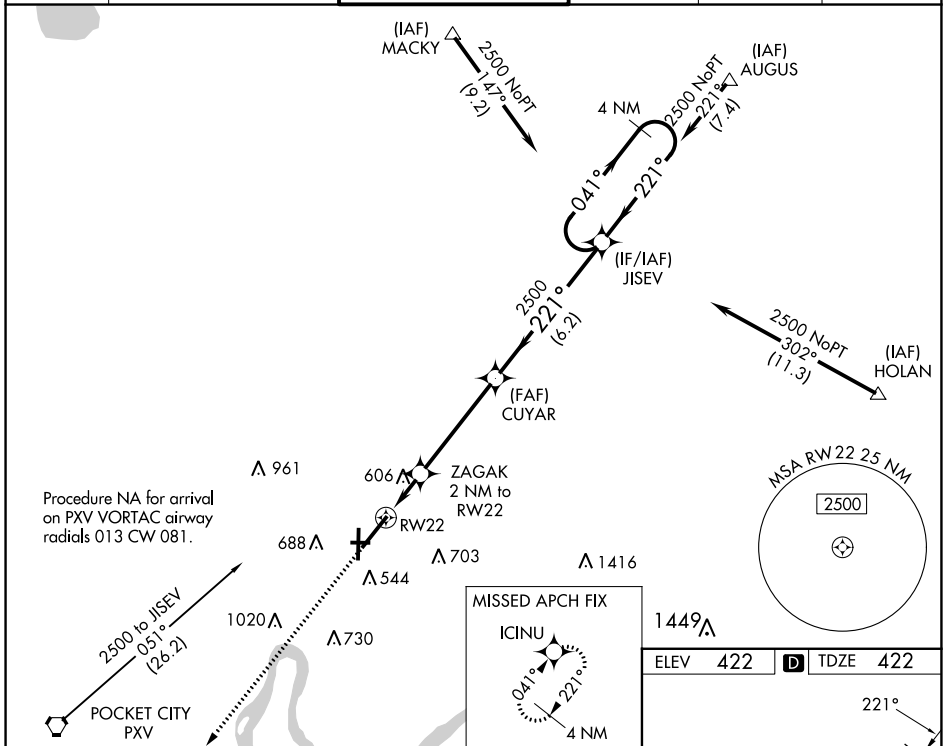
WAAS CH 42512 W22A	APP CRS 221°	Rwy Idg TDZE 422 Apt Elev 422	8021
--	------------------------	---	-------------

RNAV (GPS) RWY 22

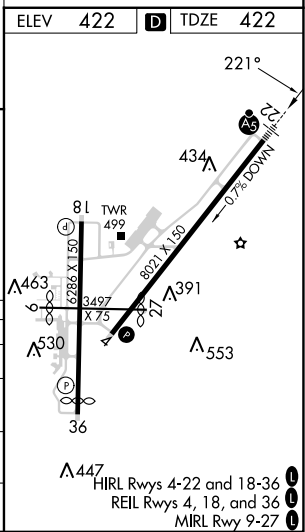
EVANSVILLE RGNL (EVV)

ASR For uncompensated Baro-VNAV systems, LNAV/VNAV NA below -15°C (5°F) or above 54°C (130°F). DME/DME RNP-0.3 NA. Circling Rwy 9 NA at night. ** RVR 1800 authorized with the use of FD or AP or HUD to DA.	MALSR 	MISSED APPROACH: Climb to 2500 direct ICINU and hold.

ATIS 120.2	EVANSVILLE APP CON ★ 124.025 290.9	EVANSVILLE TOWER ★ 118.7 (CTAF) 257.8	GND CON 121.9	CLNC DEL 126.6	UNICOM 122.95
----------------------	--	---	-------------------------	--------------------------	-------------------------



CATEGORY	A	B	C	D
LPV DA		**622/24	200 (200-½)	
LNAV/VNAV DA		840/45	418 (500-¾)	
LNAV MDA	860/24	438 (500-½)	860/40	438 (500-¾)
CIRCLING	920-1 498 (500-1)	1040-1 618 (700-1)	1040-1¾ 618 (700-1¾)	1040-2 618 (700-2)



EC-2, 03 OCT 2024 to 31 OCT 2024

EC-2, 03 OCT 2024 to 31 OCT 2024