

CLOVIS, NEW MEXICO

# RNAV (GPS) RWY 31

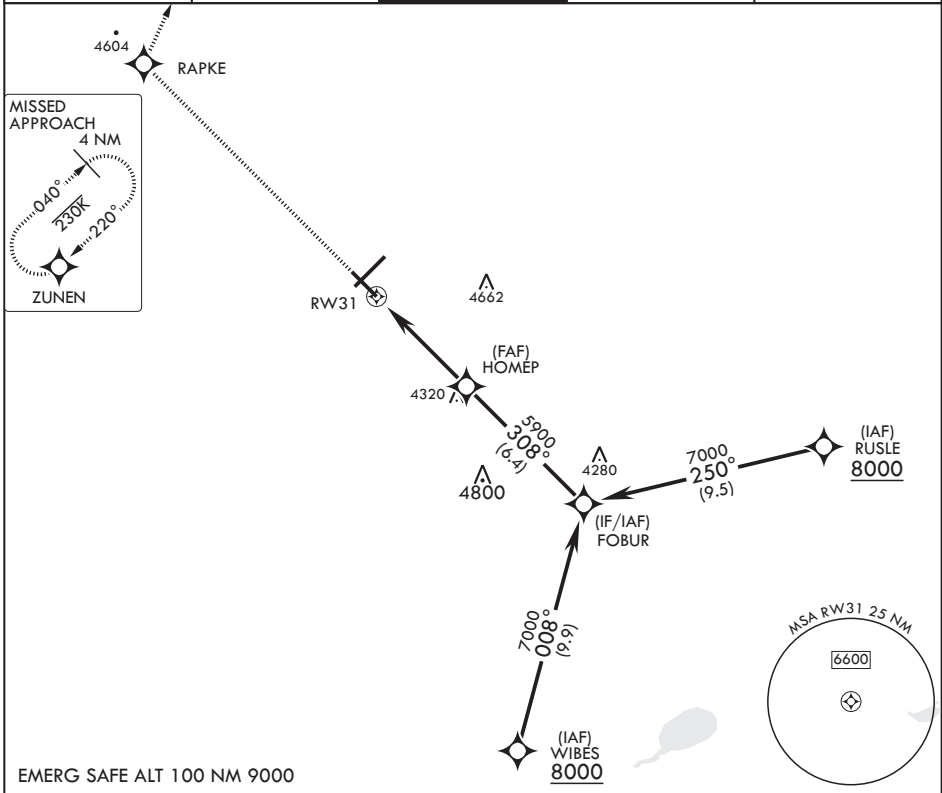
APCH CRS <b>308°</b>	Rwy Idg <b>8196</b>
	TDZE <b>4270</b>
	Arprt Elev <b>4295</b>

- (USAF)

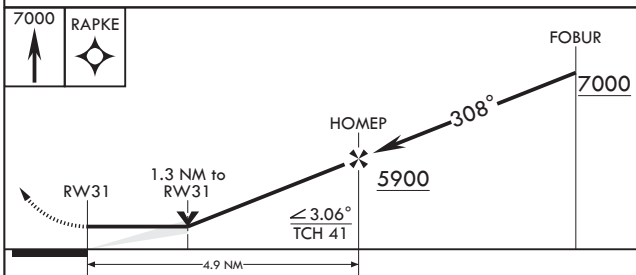
CANNON AFB (KCVS)

RNP APCH	SSALR	MISSED APPROACH: Climb to 7000 direct RAPKE, then turn right to ZUNEN and hold.
<p>▼ * When ALS inop, increase CAT AB vis to 1 mile, CAT CDE vis to 1 3/8 miles.</p>		

ATIS <b>119.1 269.9</b>	CANNON APP CON <b>118.425 352.1</b>	TOWER <b>120.4 270.25</b>	GND CON <b>121.9 275.8</b>	CLNC DEL <b>120.2 293.225</b>
----------------------------	--	------------------------------	-------------------------------	----------------------------------

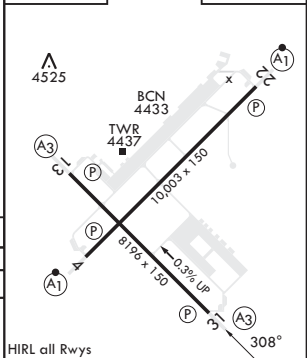


EMERG SAFE ALT 100 NM 9000



ELEV 4295	TDZE 4270
-----------	-----------

CATEGORY	A	B	C	D	E
LNVA MDA*	4720-½	450 (500-½)	4720-⅞	450	(500-⅞)
ⓐ CIRCLING	4840-1	545 (600-1)	4860-1½ 565 (600-1½)	5000-2¼ 705 (800-2¼)	5020-2½ 725 (800-2½)



CLOVIS, NEW MEXICO

34°23'N - 103°19'W

CANNON AFB (KCVS)

Amdt 5 28DEC23

# RNAV (GPS) RWY 31

SW-1, 31 OCT 2024 to 28 NOV 2024

SW-1, 31 OCT 2024 to 28 NOV 2024