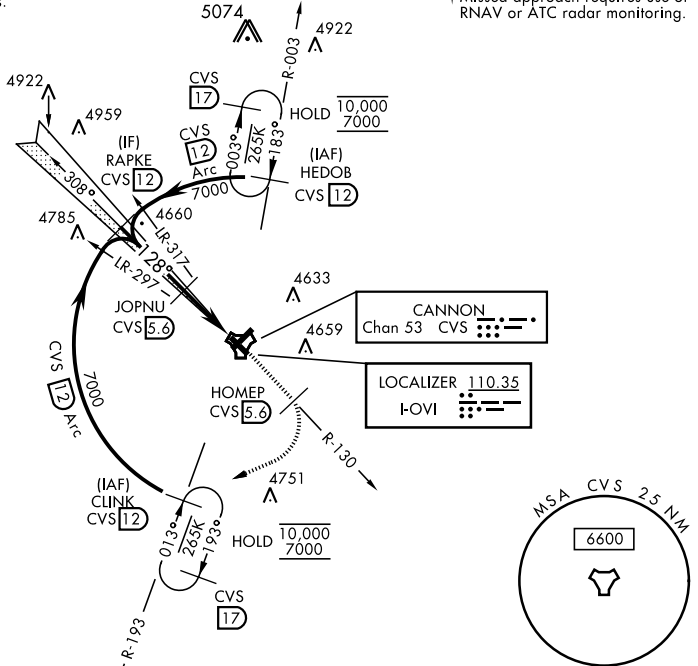


# ILS or LOC RWY 13

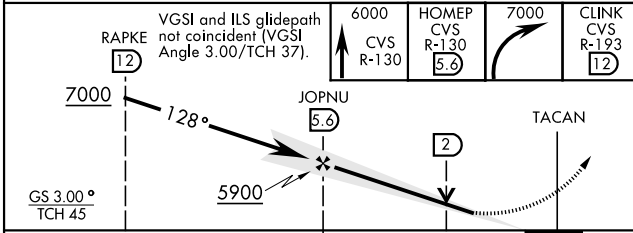
LOC I-OVI <b>110.35</b>	APCH CRS <b>128°</b>	Rwy ldg <b>8196</b> TDZE <b>4294</b> Arprt Elev <b>4295</b>	AL-512 [USAF]	CANNON AFB (KCVS)
ATC RADAR or DME required.		SSALR  MISSED APPROACH: Climb to 6000 out CVS TACAN R-130 5.6 DME (HOMEP) then climbing right turn to 7000 intercept CVS R-193 to 12 DME (CLINK) and hold.		
* When ALS inop, increase vis to 3/4 mile.				
ATIS <b>119.1 269.9</b>	CANNON APP CON <b>118.425 352.1</b>	CANNON TOWER <b>120.4 270.25</b>	GND CON <b>121.9 275.8</b>	CLNC DEL <b>120.2 293.225</b>

\*\* When ALS inop, increase CAT AB vis to 1 mile; CAT CDE vis to 1 3/8 miles.

† Missed approach requires use of RNAV or ATC radar monitoring.



EMERG SAFE ALT 100 NM 8000



ELEV 4295	TDZE 4294
128°	
4525	4433
4327	TWR 4437
FAF to MAP 4.9 NM	
HIRL all rwys	
Knots 60 90 120 150 180	
Min:Sec 4:54 3:16 2:27 1:58 1:38	

CATEGORY	A	B	C	D	E
S-ILS 13 *	4544-1/2		250	(300-1/2)	
S-LOC 13**	4760-1/2 466 (500-1/2)		4760-1 466 (500-1)		
CIRCLING	4840-1		4860-1 1/2		5000-2 1/4
	545 (600-1)		565(600-1 1/2)		705(800-2 1/4)
			5020-2 1/2		725(800-2 1/2)

# ILS or LOC RWY 13

SW-1, 31 OCT 2024 to 28 NOV 2024

SW-1, 31 OCT 2024 to 28 NOV 2024