

# TACAN Y RWY 21R

YUMA MCAS/YUMA INTL (KNYL)

TACAN NYL Chan <b>84</b>	APCH CRS <b>208°</b>	Rwy ldg <b>13,300</b> TDZE <b>193</b> Arprt Elev <b>213</b>
-----------------------------	-------------------------	---

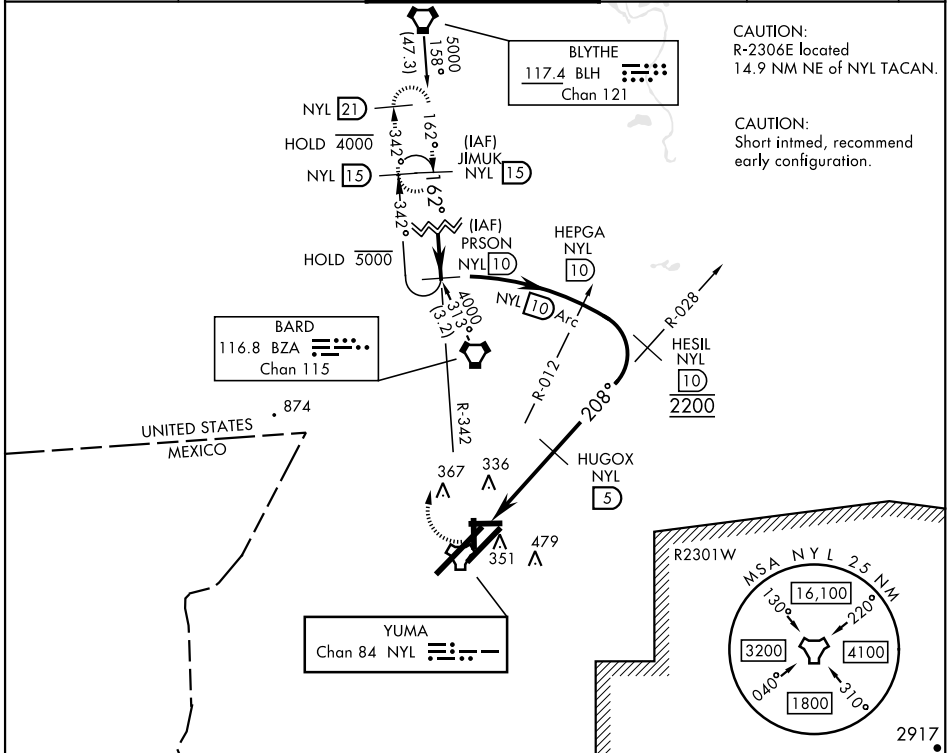
AL-511 [USN]

**M** \* When ALS inop, increase CAT AB vis to 1 mile, CAT CD vis to 1 1/8 miles.

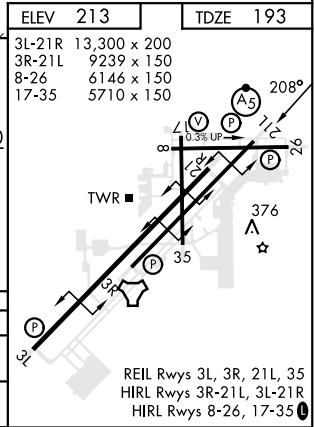
**MALS** **A5**

**MISSED APPROACH:** Climbing right turn to 4000 intercept NYL TACAN R-342 to JIMUK and hold, continue climb-in-hold to 4000.

ATIS ★ <b>118.8 273.5</b>	APP CON <b>124.7 371.975</b>	TOWER ★ <b>119.3 (CTAF) 0 377.075</b>	GND CON <b>121.9 314.0</b>	CLNC DEL <b>118.0 336.4</b>	ASR/PAR
------------------------------	---------------------------------	--	-------------------------------	--------------------------------	---------



	JIMUK NYL <b>15</b>	PRSON NYL <b>10</b>	JIMUK NYL <b>15</b>		
TACAN	HUGOX NYL <b>5</b>	HESIL NYL <b>10</b>	HUGOX NYL <b>5</b>		
CATEGORY		A	B	C	D
S-21R*	640-1/2	447 (500-1/2)	640-7/8 447 (500-7/8)		
	680-1 467 (500-1)	700-1 487 (500-1)	800-1 1/2 587 (600-1 1/2)	800-2 587 (600-2)	



# TACAN Y RWY 21R

SW-4, 03 OCT 2024 to 31 OCT 2024

SW-4, 03 OCT 2024 to 31 OCT 2024