

YUMA, ARIZONA

RNAV (GPS) RWY 17

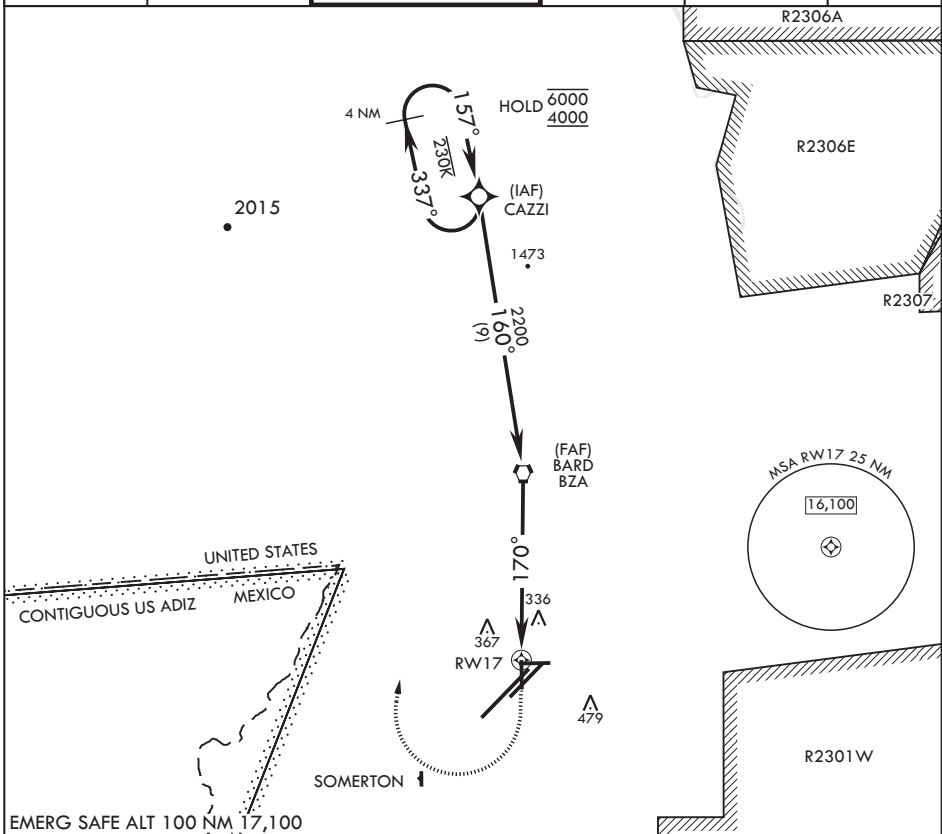
| | | |
|----------|------------|------|
| APCH CRS | Rwy Idg | 5710 |
| 170° | TDZE | 197 |
| | Arprt Elev | 213 |

AL-511 (USN)

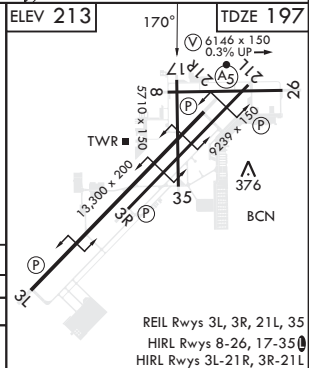
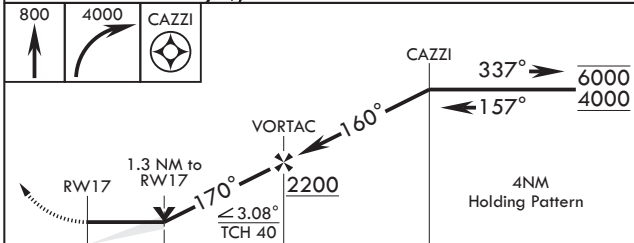
YUMA MCAS YUMA INTL (KNYL)

RNP APCH MISSED APPROACH: Climb to 800 then, climbing right turn to 4000 direct CAZZI and hold. Continue climb in hold to 4000.

| | | | | | |
|-------------|---------------|------------------------|-------------|-------------|---------|
| ATIS★ | APP CON | TOWER★ | GND CON | CLNC DEL | ASR/PAR |
| 118.8 273.5 | 124.7 371.975 | 119.3 (CTAF) 0 377.075 | 121.9 314.0 | 118.0 336.4 | |



EMERG SAFE ALT 100 NM 17,100



| | | | | | | | | |
|------------|-------|-----|---------|--------|-----|----------|-------|-------------|
| CATEGORY | A | | B | | C | | D | |
| LNAV MDA | 640-1 | 443 | (500-1) | 640-1½ | 443 | (500-1½) | 800-2 | |
| ◻ CIRCLING | 680-1 | 467 | (500-1) | 700-1 | 487 | (500-1) | 800-2 | 587 |
| | | | | | | | | 587 (600-2) |

REIL Rwy 3L, 3R, 21L, 35
 HIRL Rwy 8-26, 17-35
 HIRL Rwy 3L-21R, 3R-21L

YUMA, ARIZONA

32°39'N - 114°36'W

YUMA MCAS YUMA INTL (KNYL)

Amdt 5 22APR21

RNAV (GPS) RWY 17

SW-4, 31 OCT 2024 to 28 NOV 2024

SW-4, 31 OCT 2024 to 28 NOV 2024