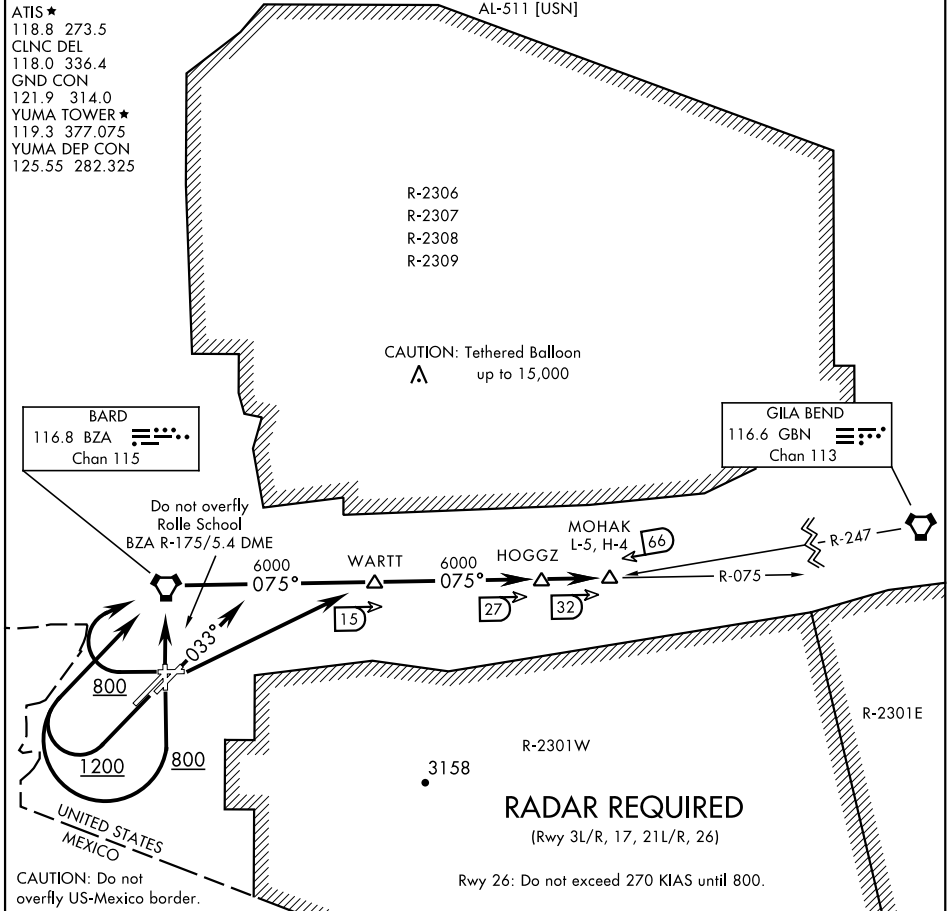


MOHAK FIVE DEPARTURE (MOHAK5•MOHAK)

YUMA MCAS/YUMA INTL (KNYL)

YUMA, ARIZONA



SW-4, 03 OCT 2024 to 31 OCT 2024

SW-4, 03 OCT 2024 to 31 OCT 2024

DEPARTURE ROUTE DESCRIPTION

- TAKE-OFF RWY 3L/R: Climb hdg 033°, then RADAR vectors to intercept BZA VORTAC R-075. Thence...
 - TAKE-OFF RWY 8: Climbing left turn direct WARTT. Thence...
 - TAKE-OFF RWY 17: Climb to 800, then climbing right turn direct BZA VORTAC. Thence...
 - TAKE-OFF RWY 21L/R: Climb to 1200, then climbing right turn direct BZA VORTAC. Thence...
 - TAKE-OFF RWY 26: Climb to 800, then climbing right turn direct BZA VORTAC. Do not exceed 270 KIAS until 800.
 - TAKE-OFF RWY 35: Climb direct BZA VORTAC. Thence....
- ...via BZA R-075 to MOHAK INT via HOGGZ INT. Then via assigned route. Maintain assigned altitude. Expect clearance to filed altitude/flight level 10 minutes after departure.

MOHAK FIVE DEPARTURE (MOHAK5•MOHAK)

Orig 22APR21

YUMA, ARIZONA

YUMA MCAS/YUMA INTL (KNYL)