

HI-TACAN Z RWY 3L

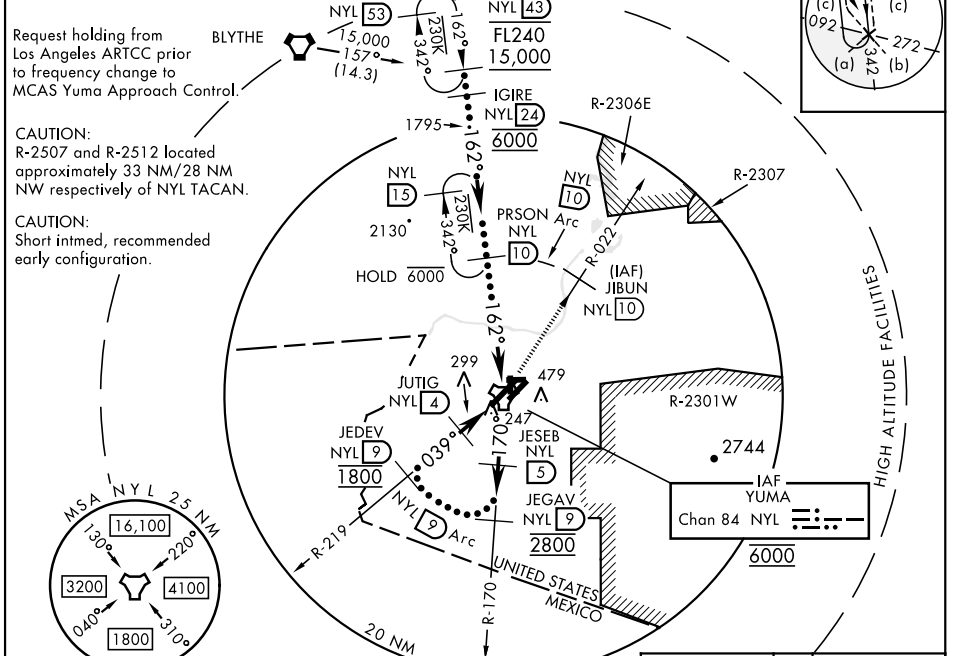
TACAN NYL Chan 84	APCH CRS 039°	Rwy ldg 13,300 TDZE 195 Arprt Elev 213	AL-511 [USN]	YUMA MCAS/YUMA INTL (KNYL)
-----------------------------	-------------------------	---	--------------	----------------------------

MISSED APPROACH: Climbing left turn to 4000, intercept NYL TACAN R-022 to JIBUN, cross JIBUN at or above 4000.

ATIS★ 118.8 273.5	APP CON 124.7 371.975	TOWER★ 119.3 (CTAF) 0 377.075	GND CON 121.9 314.0	CLNC DEL 118.0 336.4	ASR/ PAR
-----------------------------	---------------------------------	---	-------------------------------	--------------------------------	-------------

Knots	60	120	180	240	300	360
V/V(fpm)	325	650	975	1300	1625	1950

ATC climb of 325 ft/NM to 4000

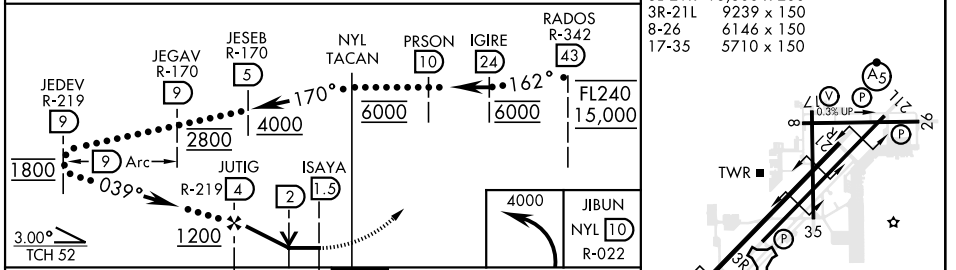


Request holding from BLYTHE (hexagon symbol) Los Angeles ARTCC prior to frequency change to MCAS Yuma Approach Control.

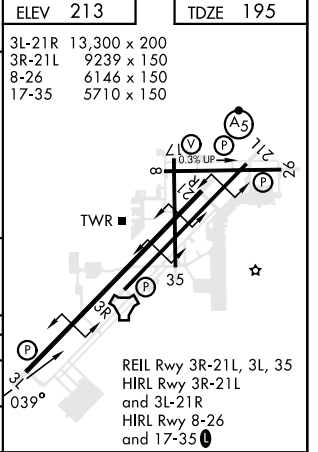
CAUTION: R-2507 and R-2512 located approximately 33 NM/28 NM NW respectively of NYL TACAN.

CAUTION: Short intmd, recommended early configuration.

ELEV 213	TDZE 195
-----------------	-----------------



CATEGORY	C	D	E
S-3L	560-1	365	(400-1)
CIRCLING	800-1½ 587 (600-1½)	800-2 587 (600-2)	



HI-TACAN Z RWY 3L

SW-4, 03 OCT 2024 to 31 OCT 2024

SW-4, 03 OCT 2024 to 31 OCT 2024