

# HI-TACAN Z RWY 21R

TACAN NYL Chan <b>84</b>	APCH CRS <b>208°</b>	Rwy ldg <b>13,300</b> TDZE <b>193</b> Arprt Elev <b>213</b>
-----------------------------	-------------------------	---

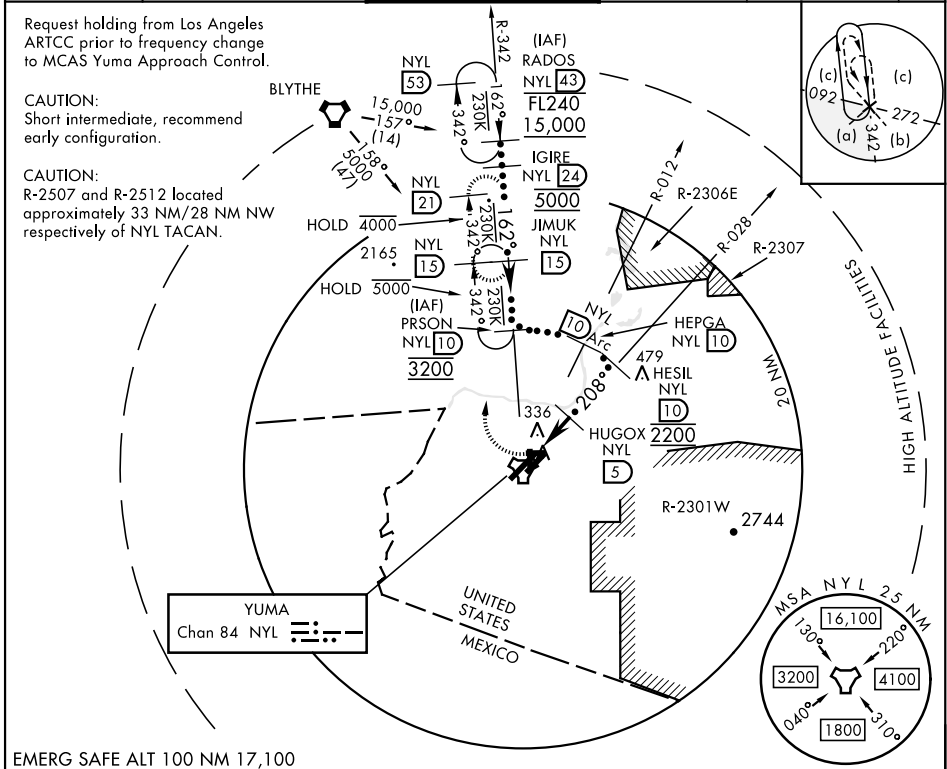
AL-511 [UNSN]





YUMA MCAS/YUMA INTL (KNYL)

▼ \* When ALS inop, increase vis to 1½ miles.
 

 MISSED APPROACH: Climbing right turn to 4000 intercept NYL TACAN R-342 to JIMUK and hold, continue climb-in-hold to 4000.

ATIS★ <b>118.8 273.5</b>	APP CON <b>124.7 371.975</b>	TOWER★ <b>119.3 (CTAF) 0 377.075</b>	GND CON <b>121.9 314.0</b>	CLNC DEL <b>118.0 336.4</b>	ASR/ PAR
-----------------------------	---------------------------------	---	-------------------------------	--------------------------------	-------------



 4000 NYL R-342  JIMUK NYL 15	ELEV 213 TDZE 193 3L-21R 13,300 x 200 3R-21L 9239 x 150 8-26 6146 x 150 17-35 5710 x 150
 TACAN HOBMA 1.3 HUGOX 5 HESIL R-028 10 HEPGA R-012 10 PRSON R-342 10 JIMUK 15 IGIRE 24 RADOS R-342 43 FL240 15,000	 TWR REIL Rwy 3R-21L, 3L, 35 HIRL Rwys 3R-21L and 3L-21R HIRL Rwys 8-26 and 17-35
CATEGORY C D E S-21R* 640-7/8 447 (500-7/8) CIRCLING 800-1½ 587 (600-1½) 800-2 587 (600-2)	

# HI-TACAN Z RWY 21R

SW-4, 03 OCT 2024 to 31 OCT 2024

SW-4, 03 OCT 2024 to 31 OCT 2024