

# CARGO ONE DEPARTURE (CARGO1•CARGO)

YUMA MCAS/YUMA INTL (KNYL)

YUMA, ARIZONA

ATIS ★  
 118.8 273.5  
 CLNC DEL  
 118.0 336.4  
 GND CON  
 121.9 314.0  
 YUMA TOWER ★  
 119.3 377.075  
 YUMA DEP CON  
 125.55 282.325

AL-511 [USN]

Rwy	Knots	60	120	180	240	300	360
3L/R	V/V(fpm)	225	450	675	900	1125	1350
26	V/V(fpm)	210	420	630	840	1050	1260
35	V/V(fpm)	241	482	723	964	1205	1446

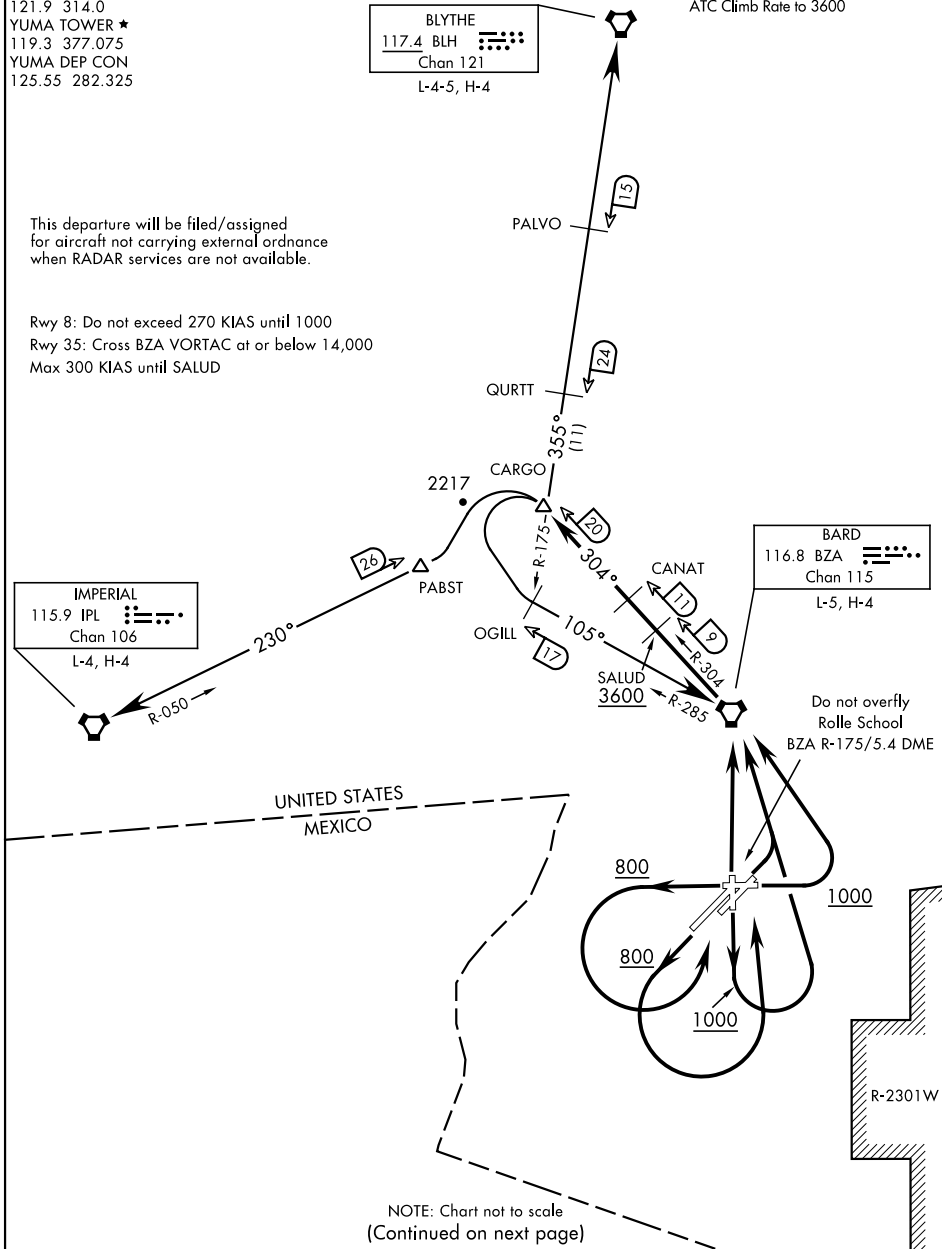
ATC Climb Rate to 3600

BLYTHE  
 117.4 BLH  
 Chan 121

L-4-5, H-4

This departure will be filed/assigned for aircraft not carrying external ordnance when RADAR services are not available.

Rwy 8: Do not exceed 270 KIAS until 1000  
 Rwy 35: Cross BZA VORTAC at or below 14,000  
 Max 300 KIAS until SALUD



IMPERIAL  
 115.9 IPL  
 Chan 106

L-4, H-4

BARD  
 116.8 BZA  
 Chan 115

L-5, H-4

Do not overfly Rolle School BZA R-175/5.4 DME

UNITED STATES  
MEXICO

NOTE: Chart not to scale (Continued on next page)

# CARGO ONE DEPARTURE (CARGO1•CARGO)

YUMA, ARIZONA

YUMA MCAS/YUMA INTL (KNYL)

Amdt 1 17JUN21

SW-4, 03 OCT 2024 to 31 OCT 2024

SW-4, 03 OCT 2024 to 31 OCT 2024