

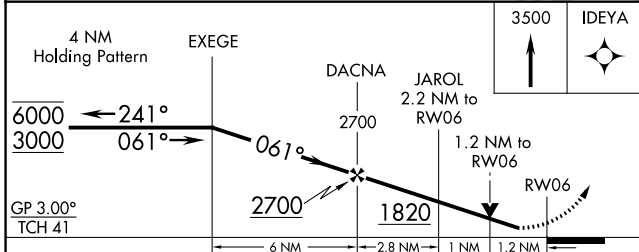
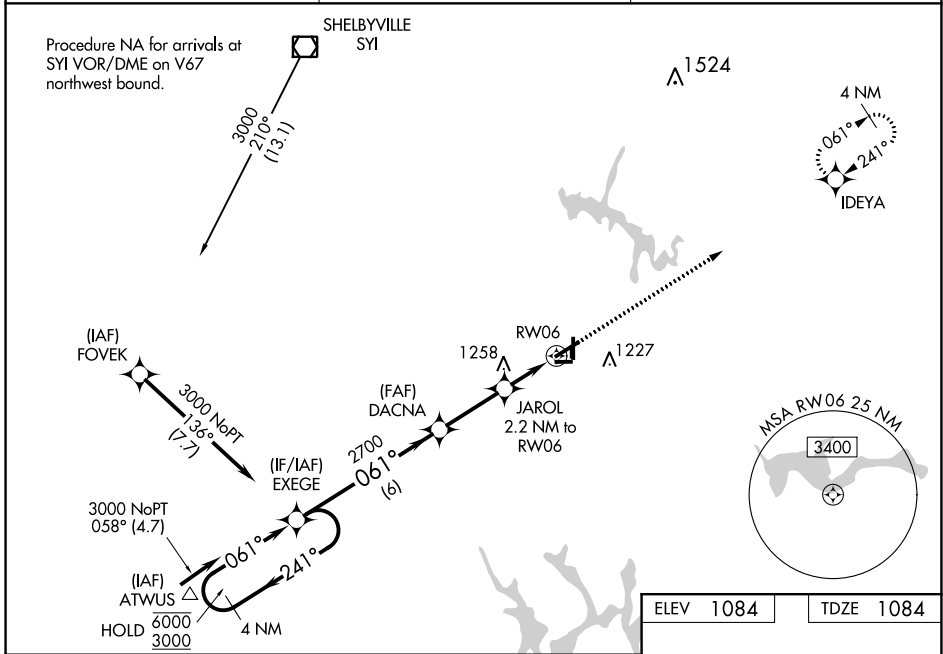
WAAS CH 99324 W06A	APP CRS 061°	Rwy Idg TDZE Apt Elev	5501 1084 1084
--	------------------------	-----------------------------	---

RNAV (GPS) RWY 6

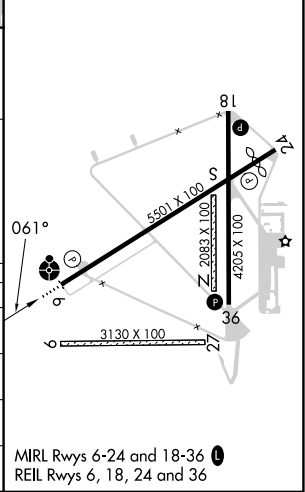
TULLAHOMA RGNL/WM NORTHERN FLD (THA)

RNP APCH - GPS.	<p>⚠ Circling NA to Rwys 9 and 27. Circling to Rwy 18 and 36 NA at night. Rwy 6 helicopter visibility reduction below $\frac{3}{4}$ SM NA. Inop table does not apply to LPV all Cats and LNAV Cat A/B. For uncompensated Baro-VNAV systems, LNAV/VNAV NA below -17°C or above 54°C. For inop ALS increase LNAV/VNAV Cat C/D visibility to 1$\frac{1}{2}$ SM.</p>	<p>ODALS</p>	<p>MISSED APPROACH: Climb to 3500 direct IDEYA and hold.</p>
-----------------	--	--------------	--

AWOS-3 128.325	MEMPHIS CENTER 128.15 323.125	UNICOM 123.0 (CTAF)
--------------------------	---	-------------------------------



ELEV 1084	TDZE 1084
-----------	-----------



CATEGORY	A	B	C	D
LPV DA		1334-1	250 (300-1)	
LNAV/VNAV DA		1525-1 $\frac{1}{8}$	441 (500-1 $\frac{1}{8}$)	
LNAV MDA		1500-1	416 (500-1)	
CIRCLING	1540-1 456 (500-1)	1580-1 496 (500-1)	1620-1 $\frac{1}{2}$ 536 (600-1 $\frac{1}{2}$)	1640-2 556 (600-2)

SE-1, 31 OCT 2024 to 28 NOV 2024

SE-1, 31 OCT 2024 to 28 NOV 2024