

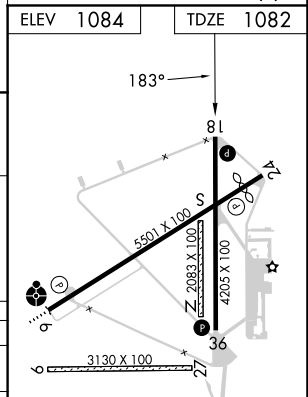
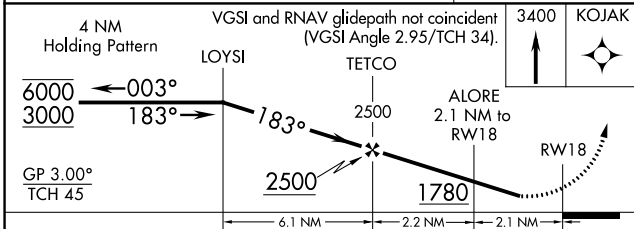
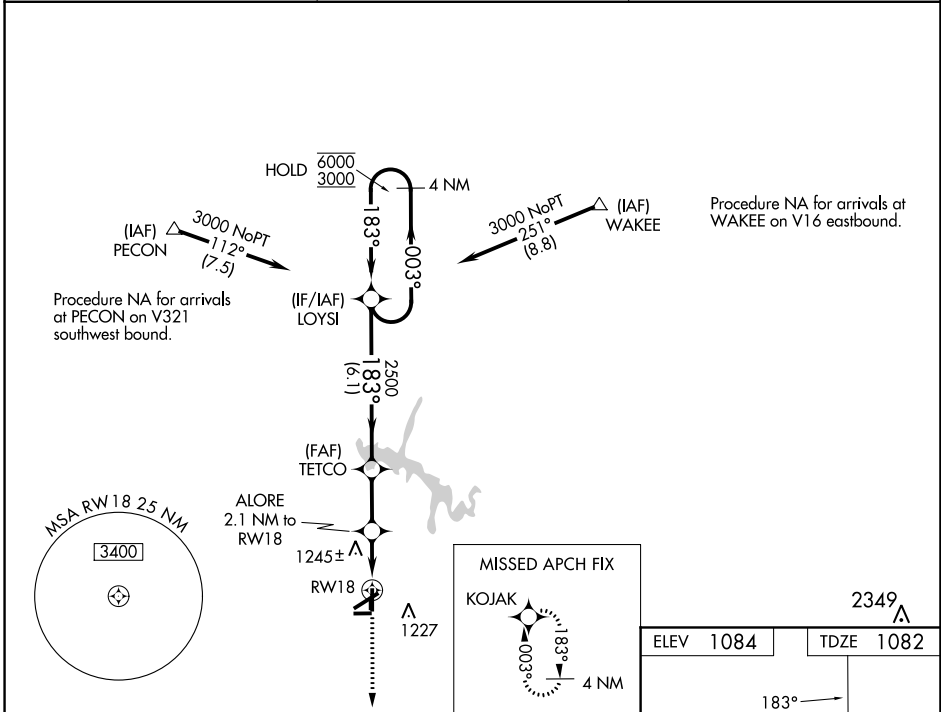
WAAS CH <b>63023</b> <b>W18A</b>	APP CRS <b>183°</b>	Rwy Idg TDZE Apt Elev	<b>4205</b> <b>1082</b> <b>1084</b>
--	------------------------	-----------------------------	---

# RNAV (GPS) RWY 18

TULLAHOMA RGNL/WM NORTHERN FLD (THA)

RNP APCH - GPS.	MISSED APPROACH: Climb to 3400 direct KOJAK and hold.
⚠ Circling NA to Rwy 9 and 27. Rwy 18 helicopter visibility reduction below 1 SM NA. Rwy 18 Straight-In and Circling minimums NA at night. For uncompensated Baro-VNAV systems, LNAV/VNAV NA below -17°C or above 37°C.	

AWOS-3 <b>128.325</b>	MEMPHIS CENTER <b>128.15 323.125</b>	UNICOM <b>123.0 (CTAF)</b>
--------------------------	---	-------------------------------



CATEGORY	A	B	C	D
LPV DA		1436-1	354 (400-1)	
LNAV/VNAV DA		1554-1 <sup>3</sup> / <sub>8</sub>	472 (500-1 <sup>3</sup> / <sub>8</sub> )	
LNAV MDA	1500-1	418 (500-1)	1500-1 <sup>1</sup> / <sub>8</sub>	418 (500-1 <sup>1</sup> / <sub>8</sub> )
<b>C</b> CIRCLING	1540-1 456 (500-1)	1580-1 496 (500-1)	1620-1 <sup>1</sup> / <sub>2</sub> 536 (600-1 <sup>1</sup> / <sub>2</sub> )	1640-2 556 (600-2)

MIRL Rwy 6-24 and 18-36  
REIL Rwy 6, 18, 24 and 36

SE-1, 03 OCT 2024 to 31 OCT 2024

SE-1, 03 OCT 2024 to 31 OCT 2024