

WAAS CH 69523 W30A	APP CRS 298°	Rwy Idg 4400 TDZE 3290 Apt Elev 3298
--	------------------------	--

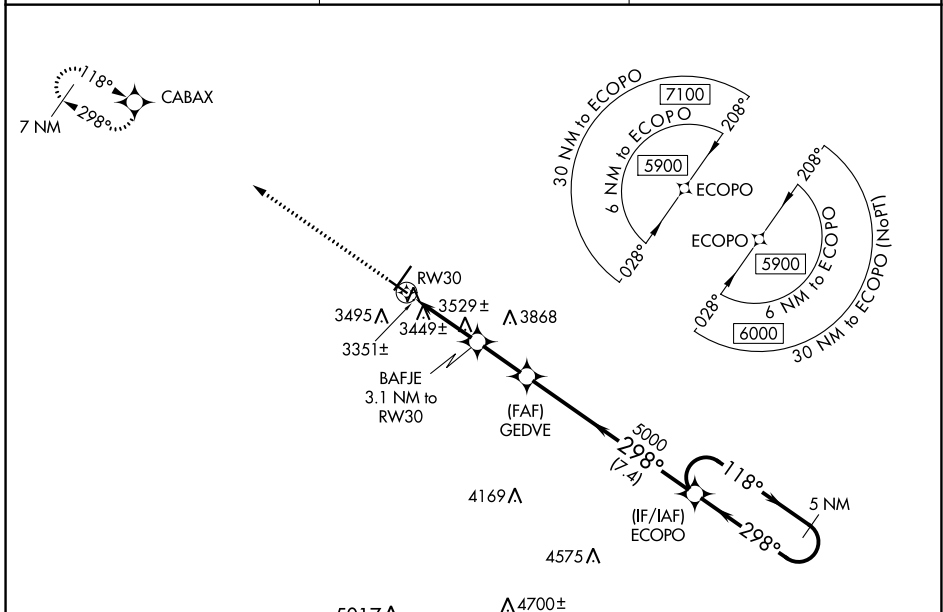
RNAV (GPS) RWY 30

CHADRON MUNI (CDR)

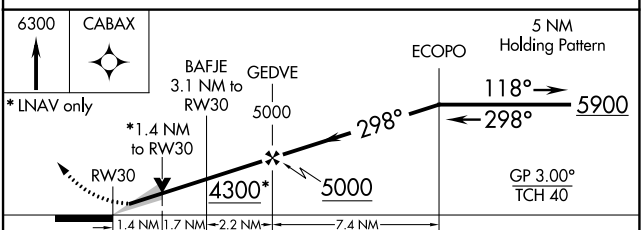
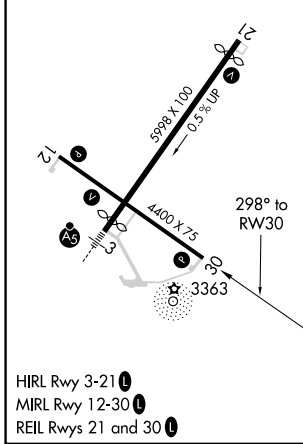
⚠ For uncompensated Baro-VNAV systems, LNAV/VNAV NA below -21°C (-5°F) or above 54°C (130°F). DME/DME RNP-0.3 NA. When local altimeter setting not received, use Pine Ridge altimeter setting and increase all DA 70 feet and all MDA 80 feet; increase LPV all Cats visibility 1/8 mile, LNAV/VNAV all Cats visibility 1/4 mile, and LNAV and Circling Cat C visibility 1/4 mile. Baro-VNAV and VDP NA with Pine Ridge altimeter setting.

MISSED APPROACH:
Climb to 6300 direct CABAX and hold.

ASOS 118.05	DENVER CENTER 127.95 338.2	UNICOM 122.8 (CTAF)
-----------------------	--------------------------------------	-------------------------------



ELEV 3298	D	TDZE 3290
-----------	----------	-----------



CATEGORY	A	B	C	D
LPV DA	3540-1		250 (300-1)	NA
LNAV/VNAV DA	3767-1 5/8		477 (500-1 5/8)	NA
LNAV MDA	3780-1	490 (500-1)	3780-1 3/8 490 (500-1 3/8)	NA
CIRCLING	3820-1 522 (600-1)	3920-1 622 (700-1)	3920-1 3/4 622 (700-1 3/4)	NA

NC-2, 31 OCT 2024 to 28 NOV 2024

NC-2, 31 OCT 2024 to 28 NOV 2024