

LOC I-CDR <b>110.9</b>	APP CRS <b>028°</b>	Rwy Idg <b>5211</b>
		TDZE <b>3294</b>
		Apt Elev <b>3298</b>


# ILS or LOC RWY 3

CHADRON MUNI (CDR)

ADF required.

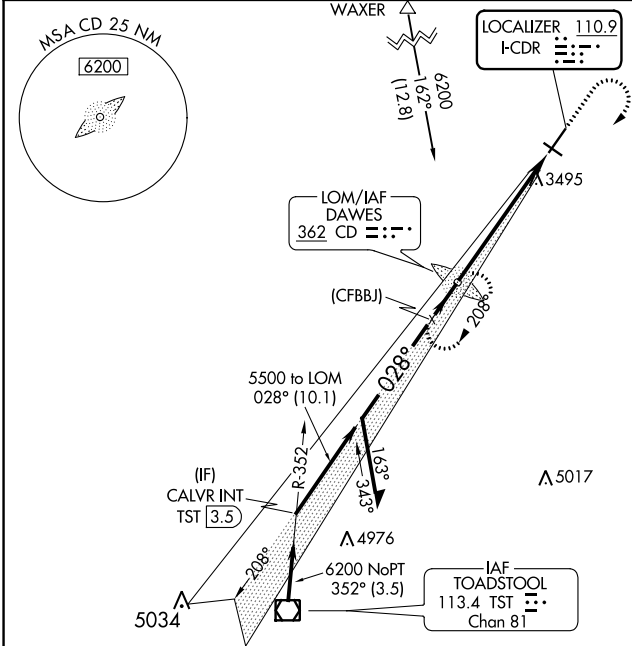
**⚠** When local altimeter setting not received, use Pine Ridge altimeter setting and increase S-ILS 3 DA to 3564 feet; increase all MDAs 80 feet and S-LOC 3 visibility Cat C/D ¼ SM, and Circling visibility Cat B/C ⅓ SM. Inop table does not apply to S-ILS 3 all Cats, S-LOC 3 Cats A and B. For inop ALS, increase S-LOC 3 Cats C and D visibility to 1½ SM. When using Pine Ridge altimeter setting, inop table does not apply to S-ILS 3 all Cats, S-LOC 3 Cat A. For inop ALS when using Pine Ridge altimeter setting, increase S-LOC 3 Cat B visibility to 1¼ SM, Cats C and D visibility to 2 SM.

MALSRL



**MISSED APPROACH:**  
Climb to 5100 then climbing right turn to 6200 direct DAWES LOM and hold.

ASOS <b>118.05</b>	DENVER CENTER <b>127.95 338.2</b>	UNICOM <b>122.8 (CTAF) 1</b>
-----------------------	--------------------------------------	---------------------------------

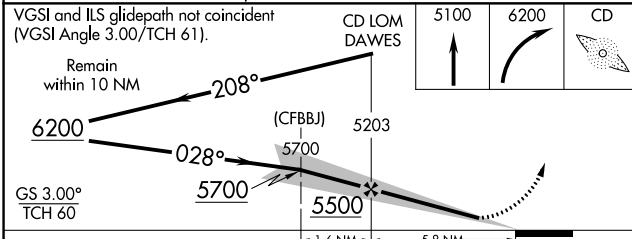


A3868

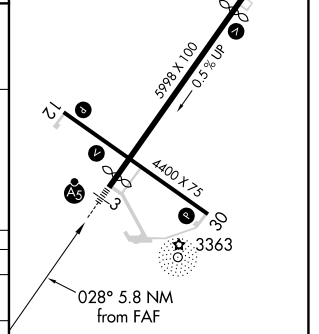
A4169

A4575

A4700±



ELEV 3298	D	TDZE 3294
REIL Rwy 21 and 30	1	
MIRL Rwy 12-30	1	
HIRL Rwy 3-21	1	



CATEGORY	A	B	C	D
S-ILS 3	3494-1 200 (200-1)			
S-LOC 3	3960-1	666 (700-1)	3960-1½	666 (700-1½)
CIRCLING	3960-1	662 (700-1)	3960-1⅞	4220-3 922 (1000-3)

FAF to MAP 5.8 NM					
Knots	60	90	120	150	180
Min:Sec	5:48	3:52	2:54	2:19	1:56

NC-2, 31 OCT 2024 to 28 NOV 2024

NC-2, 31 OCT 2024 to 28 NOV 2024