

VOR/DME SSM	APP CRS	Rwy Idg TDZE	<b>5056</b>
<b>112.2</b>	<b>337°</b>	Apt Elev	<b>716</b>
Chan <b>59</b>			

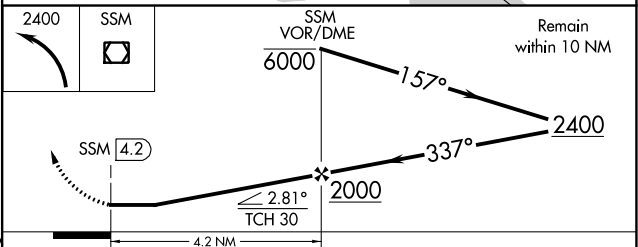
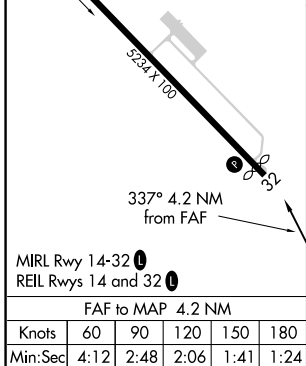
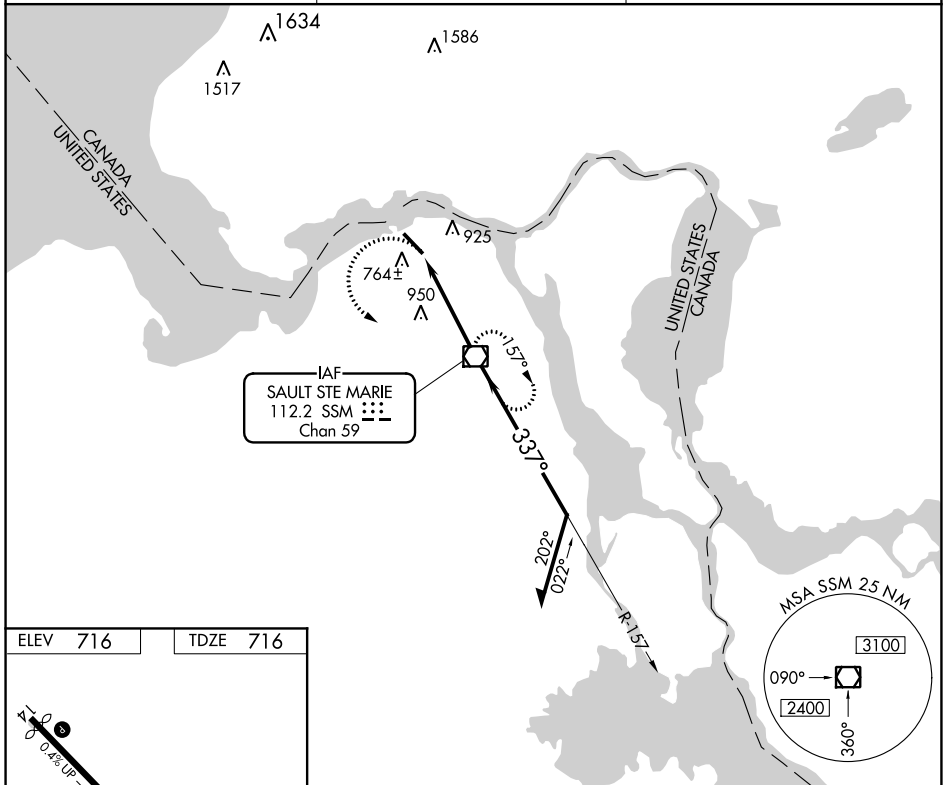
# VOR RWY 32

SAULT STE MARIE MUNI/SANDERSON FLD (A.NJ)

**⚠** When local altimeter setting not received, use Chippewa County Intl altimeter setting and increase all MDA 60 feet and increase S-32 Cat C visibility to 1¼ mile. Rwy 32 helicopter visibility reduction below ¾ SM NA.

**MISSED APPROACH:**  
Climbing left turn to 2400  
direct SSM VOR/DME and hold.

ASOS <b>118,375</b>	TORONTO CENTER <b>132.65 344.5</b>	UNICOM <b>122.7 (CTAF) 0</b>
------------------------	---------------------------------------	---------------------------------



CATEGORY	A	B	C	D
S-32	1260-1 544 (600-1)		1260-1½ 544 (600-1½)	NA
CIRCLING	1280-1 564 (600-1)		1320-1¾ 604 (700-1¾)	NA

# VOR RWY 32

EC-1, 30 DEC 2021 to 27 JAN 2022

EC-1, 30 DEC 2021 to 27 JAN 2022