

VOR/DME LYH	APP CRS	Rwy Idg	7100
109.2	207°	TDZE	938
Chan 29		Apt Elev	938

VOR RWY 22

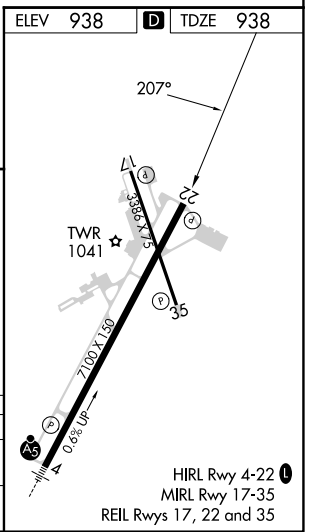
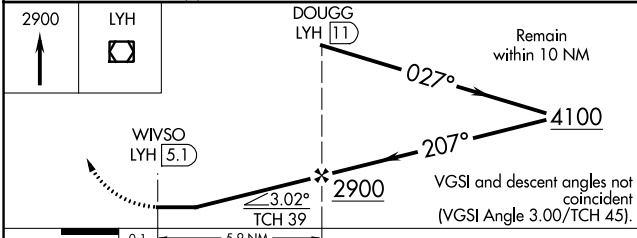
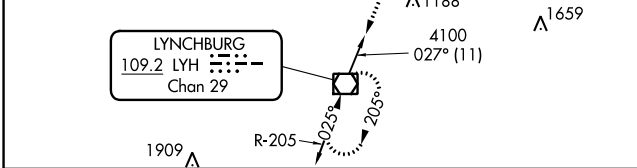
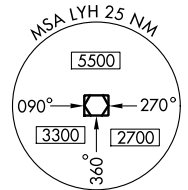
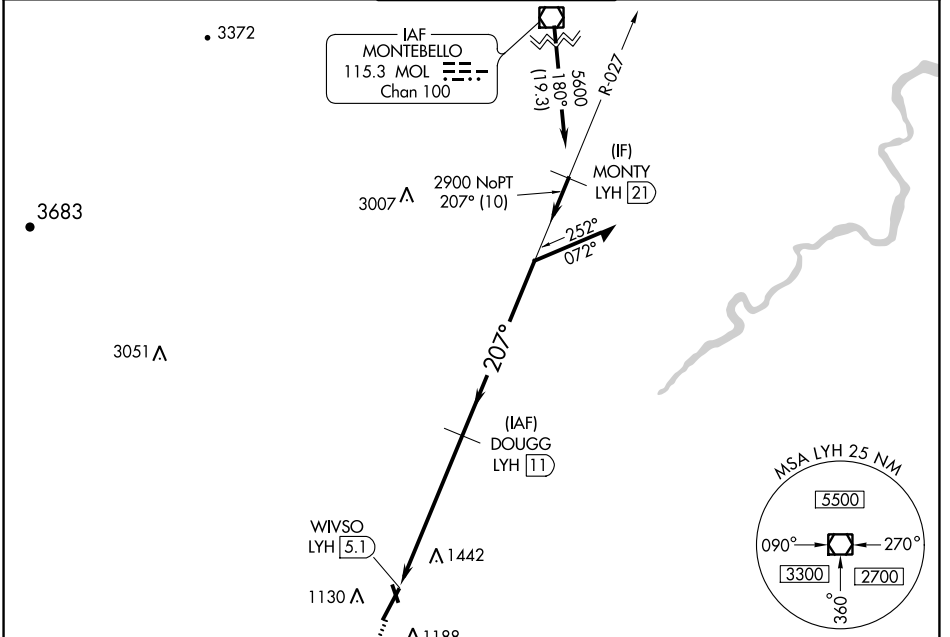
LYNCHBURG RGNL/PRESTON GLENN FLD (LYH)

DME required.

▼ Rwy 22 helicopter visibility reduction below 3/4 SM NA.
 ▲ Circling Rwy 17 NA at night.

MISSED APPROACH: Climb to 2900 direct LYH VOR/DME and hold.

ATIS 119.8	ROANOKE APP CON 135.0 254.325	LYNCHBURG TOWER ★ 127.65 (CTAF) 0 257.8	GND CON 121.9	UNICOM 122.95
----------------------	---	---	-------------------------	-------------------------



CATEGORY	A	B	C	D
	1740-1 802 (900-1)	1740-1 1/4 802 (900-1 1/4)	1740-2 1/4 802 (900-2 1/4)	1740-2 1/2 802 (900-2 1/2)
CIRCLING	1740-1 802 (900-1)	1780-1 1/4 842 (900-1 1/4)	1800-2 1/2 862 (900-2 1/2)	1800-2 3/4 862 (900-2 3/4)

VOR RWY 22

NE-3, 31 OCT 2024 to 28 NOV 2024

NE-3, 31 OCT 2024 to 28 NOV 2024

HIRL Rwy 4-22
MIRL Rwy 17-35
REIL Rws 17, 22 and 35