

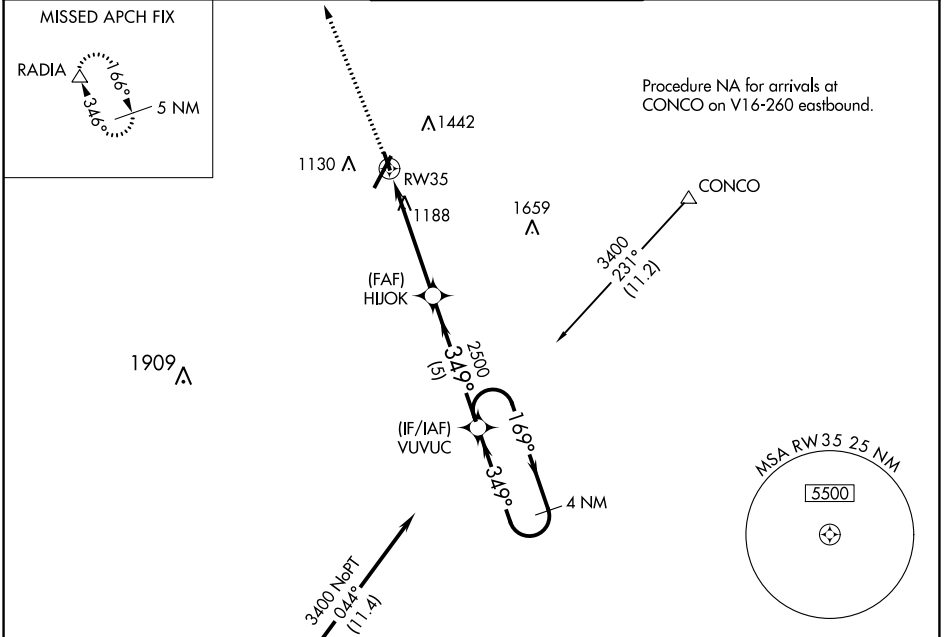
WAAS CH 93634 W35A	APP CRS 349°	Rwy Idg 3386 TDZE 933 Apt Elev 938
--	------------------------	---

RNAV (GPS) RWY 35

LYNCHBURG RGNL/PRESTON GLENN FLD (LYH)

RNP APCH.
 ⚠ Circling Rwy 17 NA at night.
 ⚠ Rwy 35 helicopter visibility reduction below 3/4 SM NA.
 MISSED APPROACH: Climb to 4900 direct RADIA and hold.

ATIS 119.8	ROANOKE APP CON 135.0 254.325	LYNCHBURG TOWER ★ 127.65 (CTAF) 257.8	GND CON 121.9	UNICOM 122.95
----------------------	---	---	-------------------------	-------------------------

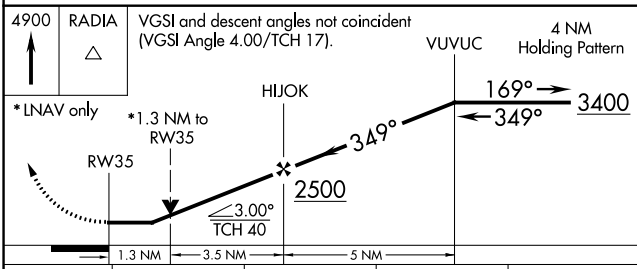


NE-3, 31 OCT 2024 to 28 NOV 2024

NE-3, 31 OCT 2024 to 28 NOV 2024

Procedure NA for arrivals at SYCAM on V469 southbound.

4900 RADIA VGS1 and descent angles not coincident (VGS1 Angle 4.00/TCH 17). 4 NM Holding Pattern



CATEGORY	A	B	C	D
LP MDA	1480-1	547 (600-1)		NA
LNAV MDA	1500-1	567 (600-1)		NA
CIRCLING	1660-1 722 (800-1)	1780-1 1/4 842 (900-1 1/4)		NA

ELEV 938 D TDZE 933

TWR 1041

7100 X 130

3386 RWY 35

750

169° 349°

HIRL Rwy 4-22
MIRL Rwy 17-35
REIL Rwy 17, 22 and 35