

WAAS CH 97705 W22A	APP CRS 216°	Rwy Idg TDZE Apt Elev	7100 938 938
--	------------------------	-----------------------------	---

RNAV (GPS) RWY 22

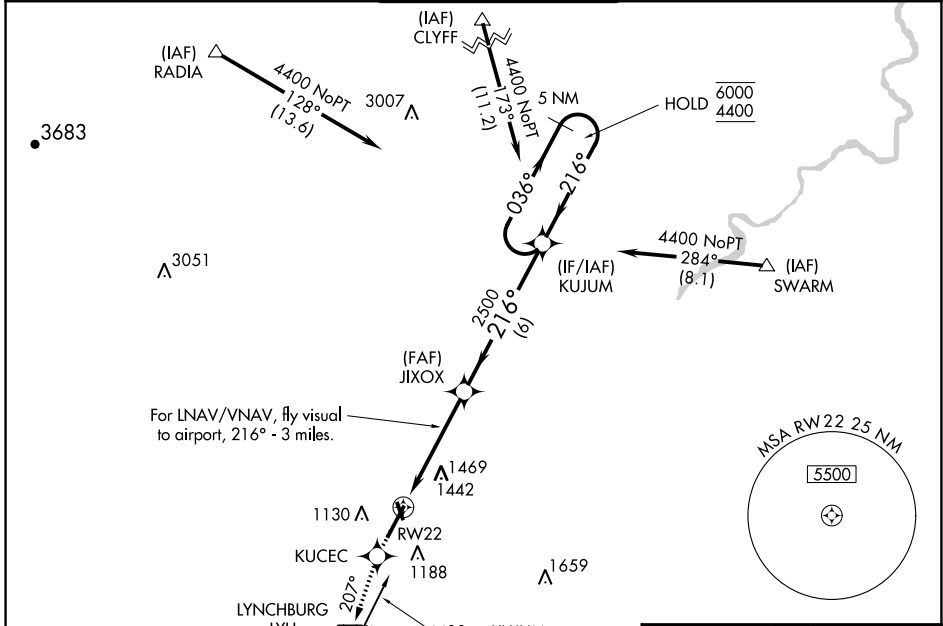
LYNCHBURG RGNL/PRESTON GLENN FLD (LYH)

RNP APCH.

▼ For uncompensated Baro-VNAV systems, LNAV/VNAV NA below -16°C or above 47°C. Rwy 22 helicopter visibility reduction below ¾ SM NA. Circling Rwy 17 NA at night.

MISSED APPROACH: Climb to 3000 direct KUCEC and track 207° to LYH VOR/DME and hold, continue climb-in hold to 3000.

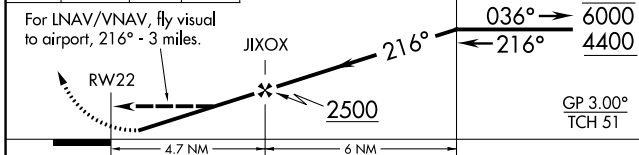
ATIS 119.8	ROANOKE APP CON 135.0 254.325	LYNCHBURG TOWER ★ 127.65 (CTAF) 0 257.8	GND CON 121.9	UNICOM 122.95
----------------------	---	---	-------------------------	-------------------------



Procedure NA for arrivals at LYH VOR/DME on V16-260 westbound.

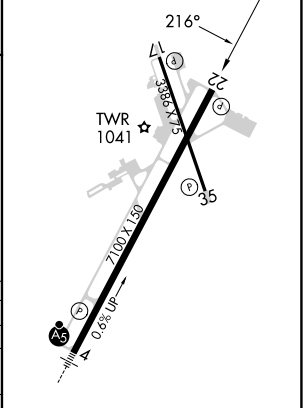
For LNAV/VNAV, fly visual to airport, 216° - 3 miles.

3000	KUCEC	tr 207°	LYH	VGSI and RNAV glidepath not coincident (VGSI Angle 3.00/TCH 45).	5 NM Holding Pattern
------	-------	---------	-----	--	----------------------



CATEGORY	A	B	C	D
LPV DA	1250-1 312 (400-1)			
LNAV/VNAV DA	1939-2	1001 (1100-2)	1939-3	1001 (1100-3)
LNAV MDA	1720-1 782 (800-1)	1720-1 ¼ 782 (800-1 ¼)	1720-2 ¼ 782 (800-2 ¼)	1720-2 ½ 782 (800-2 ½)
CIRCLING	1720-1 782 (800-1)	1780-1 ¼ 842 (900-1 ¼)	1800-2 ½ 862 (900-2 ½)	1800-2 ¾ 862 (900-2 ¾)

ELEV 938	D TDZE 938
----------	-------------------



HIRL Rwy 4-22
MIRL Rwy 17-35
REIL Rwy 17, 22 and 35

NE-3, 18 MAY 2023 to 15 JUN 2023

NE-3, 18 MAY 2023 to 15 JUN 2023