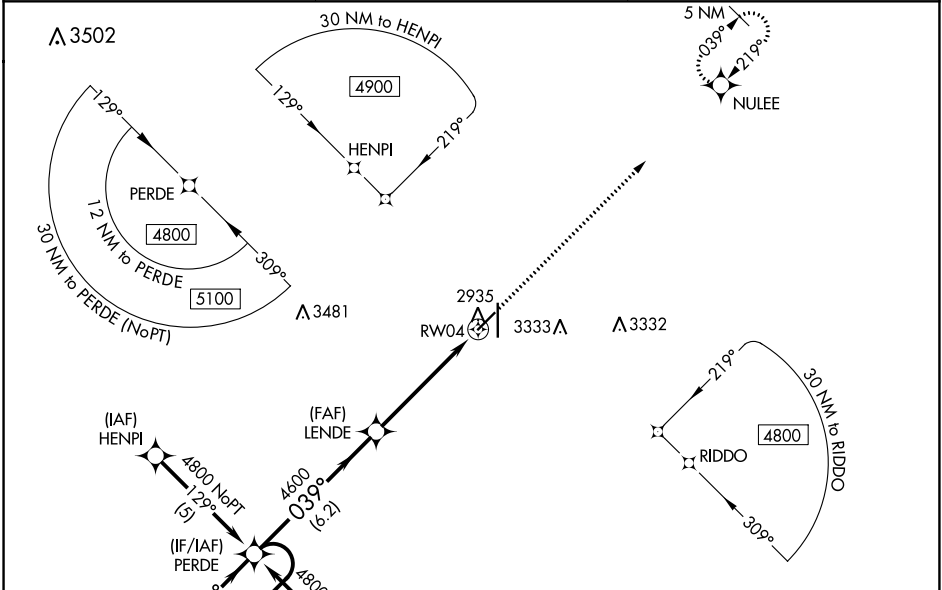


WAAS CH 72905 W04A	APP CRS 039°	Rwy Idg TDZE Apt Elev	5000 2885 2885
--	------------------------	-----------------------------	---

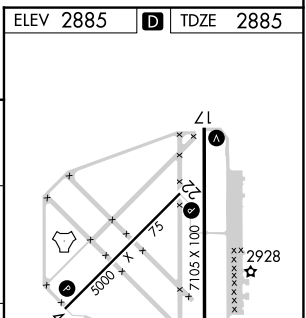
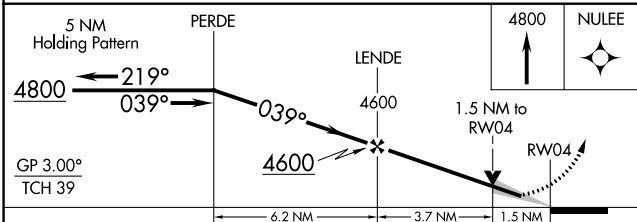
RNAV (GPS) RWY 4
LIBERAL MID-AMERICA RGNL (L.B.L.)

RNP APCH - GPS.	<p>MISSED APPROACH: Climb to 4800 direct NULEE and hold.</p>
<p>▼ For uncompensated Baro-VNAV systems, LNAV/VNAV NA below -20°C or above 54°C. ▲ Circling NA east of Rwy 17-35. When local altimeter setting not received, use GUY altimeter setting and increase LPV DA to 3248 feet; increase LNAV/VNAV DA to 3412 feet and all visibilities 3/8 SM. Increase all MDAs 120 feet and LNAV visibility Cat C/D 3/8 SM, and Circling visibility Cat C/D 1/4 SM. Baro-VNAV and VDP NA when using GUY altimeter setting.</p>	

AWOS-3PT 118.375	KANSAS CITY CENTER 134.0 257.625	UNICOM 122.8 (CTAF)
----------------------------	--	-------------------------------



ELEV 2885	TDZE 2885
-----------	-----------



CATEGORY	A	B	C	D
LPV DA	3136-1		251 (300-1)	
LNAV/VNAV DA	3300-1 3/8		415 (500-1 3/8)	
LNAV MDA	3400-1	515 (600-1)	3400-1 3/8	515 (600-1 3/8)
CIRCLING	3400-1	515 (600-1)	3400-1 1/2	3640-2 1/2
			515 (600-1 1/2)	755 (800-2 1/2)

REIL Rws 4, 17 and 22
MIRL Rwy 4-22
HIRL Rwy 17-35

NC-2, 03 OCT 2024 to 31 OCT 2024

NC-2, 03 OCT 2024 to 31 OCT 2024