


WAAS CH 63005 W35A	APP CRS 354°	Rwy Idg TDZE Apt Elev	7105 2875 2885
--	------------------------	-----------------------------	---

RNAV (GPS) RWY 35

LIBERAL MID-AMERICA RGNL (L.B.L.)

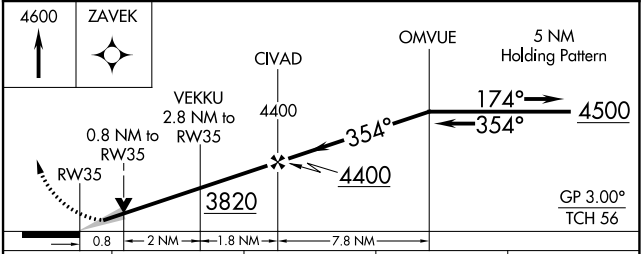
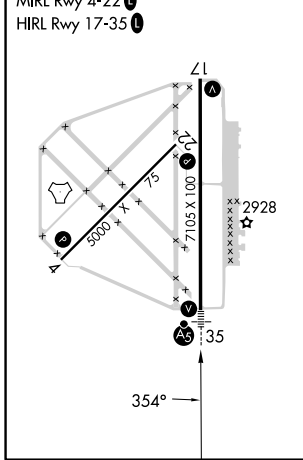
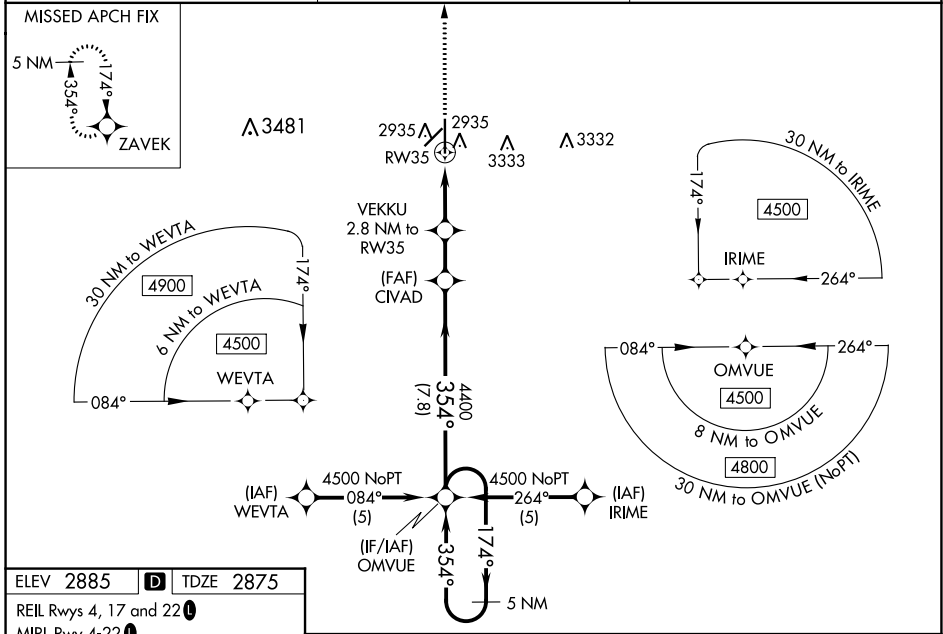
RNP APCH - GPS.

⚠ For uncompensated Baro-VNAV systems, LNAV/VNAV NA below -20°C or above 54°C. Circling NA east of Rwy 17-35. When local altimeter setting not received, use GUY altimeter setting and increase LPV DA to 3187 feet; increase LNAV/VNAV DA to 3237 feet and all visibilities $\frac{1}{8}$ SM. Increase all MDAs 120 feet and LNAV visibility Cat C/D $\frac{3}{8}$ SM, and Circling visibility Cat C/D $\frac{1}{4}$ SM. Baro-VNAV and VDP NA when using GUY altimeter setting.

MALSR 

MISSED APPROACH: Climb to 4600 direct ZAVEK and hold.

AWOS-3PT 118.375	KANSAS CITY CENTER 134.0 257.625	UNICOM 122.8 (CTAF)
----------------------------	--	-------------------------------



CATEGORY	A	B	C	D
LPV DA		3075- $\frac{1}{2}$	200 (200- $\frac{1}{2}$)	
LNAV/VNAV DA		3125- $\frac{1}{2}$	250 (300- $\frac{1}{2}$)	
LNAV MDA		3200- $\frac{1}{2}$	325 (400- $\frac{1}{2}$)	
C CIRCLING	3280-1 395 (400-1)	3340-1 455 (500-1)	3400-1 $\frac{1}{2}$ 515 (600-1 $\frac{1}{2}$)	3460-2 575 (600-2)

NC-2, 03 OCT 2024 to 31 OCT 2024

NC-2, 03 OCT 2024 to 31 OCT 2024