

WAAS CH <b>78205</b> W17A	APP CRS <b>174°</b>	Rwy Idg TDZE Apt Elev	<b>7105</b> <b>2878</b> <b>2885</b>
---------------------------------	------------------------	-----------------------------	---

# RNAV (GPS) RWY 17

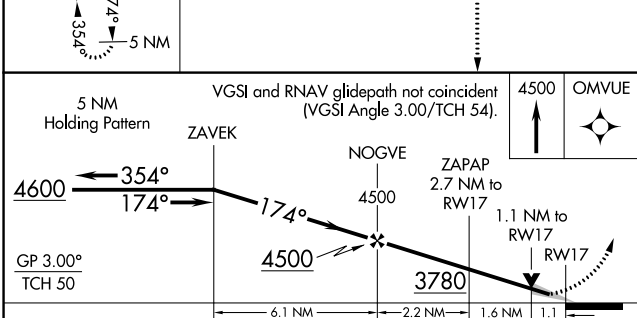
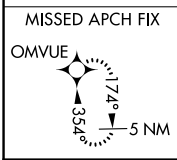
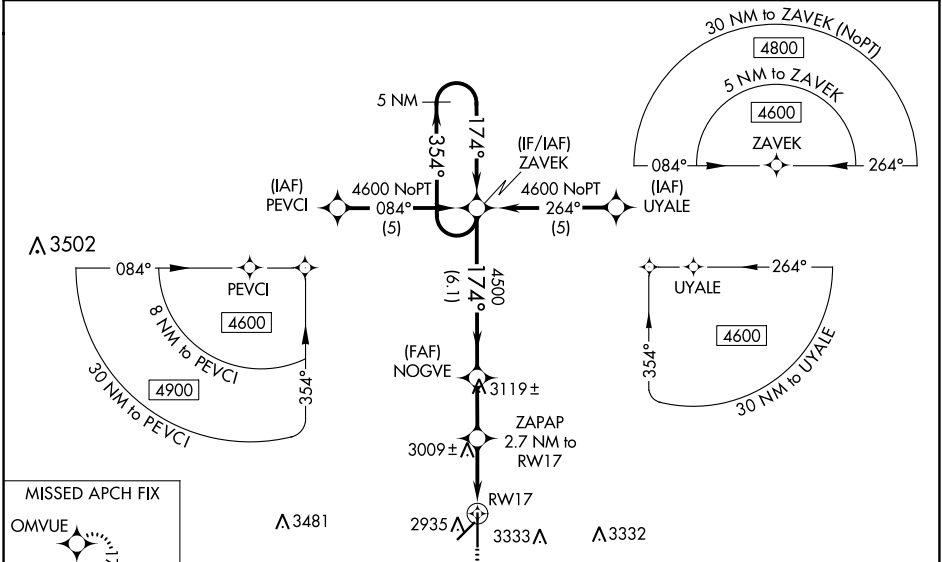
LIBERAL MID-AMERICA RGNL (L.B.L)

RNP APCH - GPS.

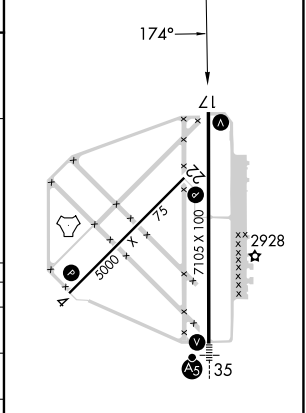
**⚠** For uncompensated Baro-VNAV systems, LNAV/VNAV NA below -20°C or above 54°C. Circling NA east of Rwy 17-35. When local altimeter setting not received, use GUY altimeter setting and increase LPV DA 3240 feet; increase LNAV/VNAV DA to 3432 feet and all visibilities 1/4 SM. Increase all MDAs 120 feet and LNAV visibility Cat C/D 1/4 SM, and Circling visibility Cat C/D 1/4 SM. Baro-VNAV and VDP NA when using GUY altimeter setting.

MISSED APPROACH: Climb to 4500 direct OMVUE and hold.

AWOS-3PT <b>118.375</b>	KANSAS CITY CENTER <b>134.0 257.625</b>	UNICOM <b>122.8 (CTAF) 0</b>
----------------------------	--	---------------------------------



ELEV 2885	<b>D</b> TDZE 2878
-----------	--------------------



CATEGORY	A	B	C	D
LPV DA		3128-1	250 (300-1)	
LNAV/VNAV DA		3320-1 3/8	442 (500-1 3/8)	
LNAV MDA	3260-1	382 (400-1)	3260-1 1/8	382 (400-1 1/8)
<b>C</b> CIRCLING	3320-1 435 (500-1)	3360-1 475 (500-1)	3400-1 1/2 515 (600-1 1/2)	3640-2 1/2 755 (800-2 1/2)

REIL Rwy 4, 17 and 22 **0**  
MIRL Rwy 4-22 **0**  
HIRL Rwy 17-35 **0**

NC-2, 03 OCT 2024 to 31 OCT 2024

NC-2, 03 OCT 2024 to 31 OCT 2024