

KNOB NOSTER, MISSOURI

TACAN Y RWY 1

TACAN SZL Chan 35	APCH CRS 004°	Rwy Idg TDZE Arprt Elev	12,400 837 871
----------------------	------------------	-------------------------------	----------------------

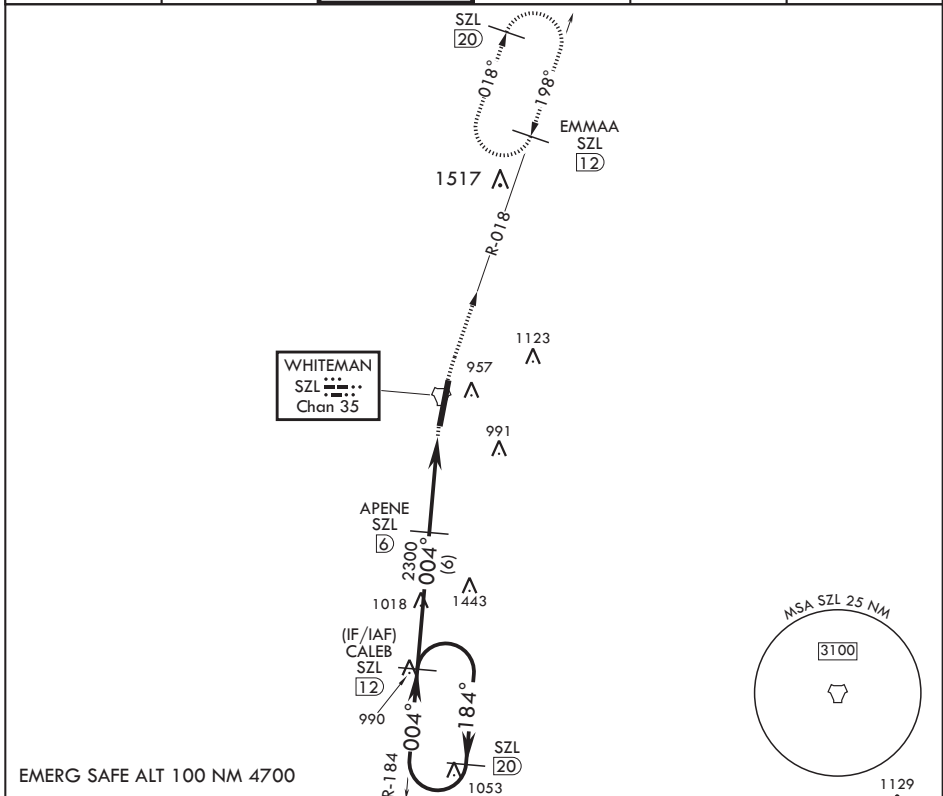
AL-496 (USAF)

WHITEMAN AFB (KSZL)

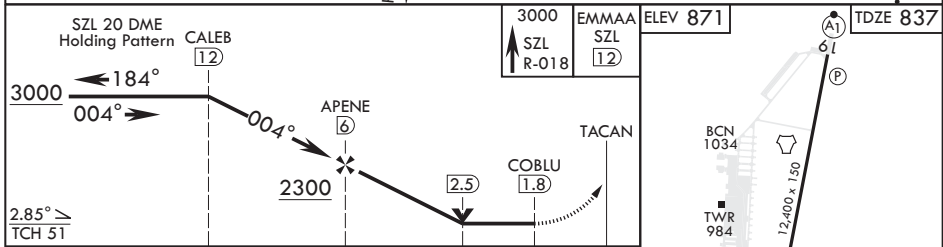
⚠ * When ALS inop, increase CAT AB RVR to 55 and vis to 1 mile, CAT CDE vis to 1 1/4 miles.
** Circling not authorized W of Rwy 1-19.

ⓐ1 **ALS-1** MISSED APPROACH: Climb to 3000 via SZL TACAN R-018 to EMMAA and hold.

ATIS★ 118.725 239.025	APP CON★ 127.45 284.0	TOWER★ 132.4 318.8	GND CON★ 119.125 275.8	CLNC DEL★ 121.75 335.8	ASR
--------------------------	--------------------------	-----------------------	---------------------------	---------------------------	-----



EMERG SAFE ALT 100 NM 4700



CATEGORY	A	B	C	D	E
S-1*	1260/24 423 (400-½)		1260/40 423 (400-¾)		
ⓐ CIRCLING**	1300-1 429 (500-1)	1340-1 469 (500-1)	1340-1½ 469 (500-1½)	1460-2 589 (600-2)	

KNOB NOSTER, MISSOURI

38°44'N - 93°33'W

WHITEMAN AFB (KSZL)

Amdt 1 10OCT19

TACAN Y RWY 1

NC-3, 31 OCT 2024 to 28 NOV 2024

NC-3, 31 OCT 2024 to 28 NOV 2024

HIRL all Rwys