

KNOB NOSTER, MISSOURI

RNAV (GPS) RWY 1

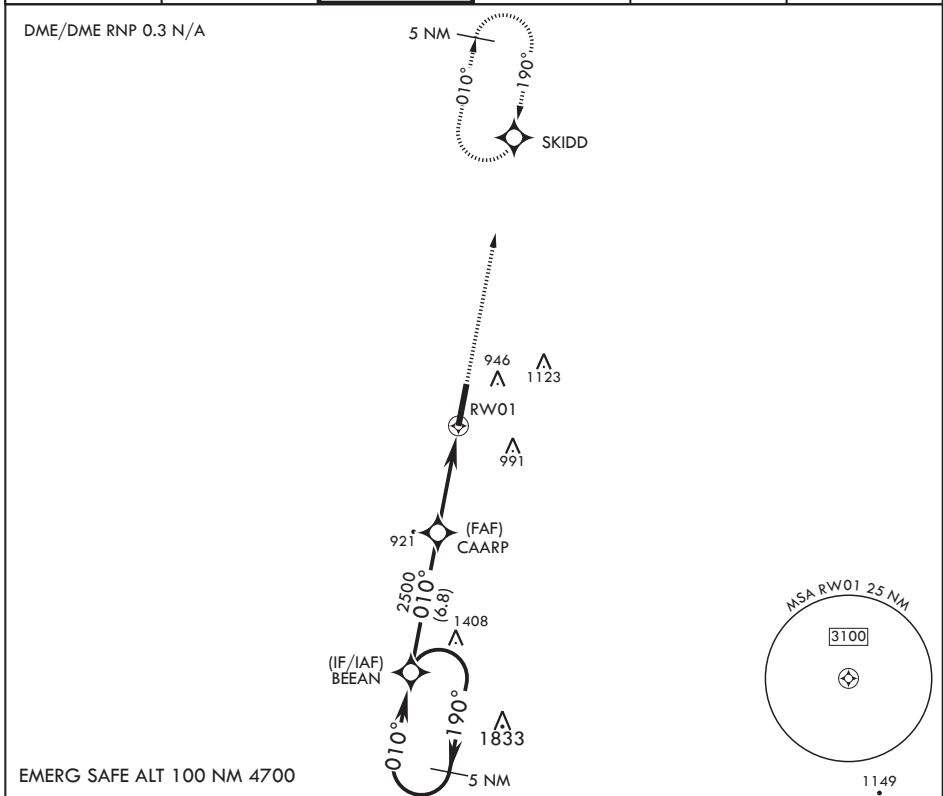
APCH CRS 010°	Rwy Idg 12,400
	TDZE 837
	Arprt Elev 871

AL-496 (USAF)

WHITEMAN AFB (KSZL)

ALSF-1 MISSED APPROACH: Climb to 3000 direct SKIDD and hold.
 * When ALS inop, increase CAT AB RVR to 55 and vis to 1 mile, CAT CDE vis to 1 3/8 miles.
 ** Circling not authorized W of Rwy 1-19.

ATIS* 118.725 239.025	APP CON* 127.45 284.0	TOWER* 132.4 318.8	GND CON* 119.125 275.8	CLNC DEL* 121.75 335.8	ASR
---------------------------------	---------------------------------	------------------------------	----------------------------------	----------------------------------	-----



5 NM Holding Pattern BEEAN 3000 190° ← 010° → 2.92° ∇ TCH 51	3000 SKIDD ELEV 871 TDZE 837	
	5 NM Holding Pattern BEEAN 3000 190° ← 010° → 2.92° ∇ TCH 51	
2500 CAARP 1.3 NM to RW01 RW01 5.2 NM		
CATEGORY A B C D E LNAV MDA* 1280/24 443 (500-½) 1280/45 443 (500-¾) CIRCLING** 1300-1 1340-1 1340-1½ 1460-2 589 (600-2) 429 (500-1) 469 (500-1) 469 (500-1½)		

KNOB NOSTER, MISSOURI
 Amdt 6 10OCT19

38°44'N - 93°33'W

WHITEMAN AFB (KSZL)

RNAV (GPS) RWY 1

NC-3, 03 OCT 2024 to 31 OCT 2024

NC-3, 03 OCT 2024 to 31 OCT 2024