

KNOB NOSTER, MISSOURI

ILS or LOC Y RWY 19

LOC I-MXJ 108.5	APCH CRS 190°	Rwy Ildg 12,400 TDZE 871 Arprt Elev 871
---------------------------	-------------------------	--------------------------------------------------------------------

AL-496 [USAF]

WHITEMAN AFB (KSZL)

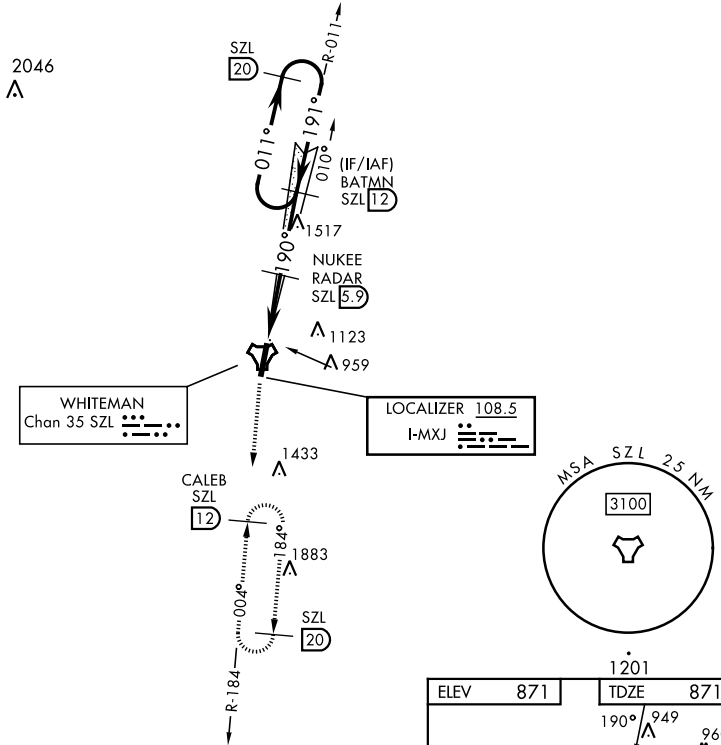
RADAR or DME required.



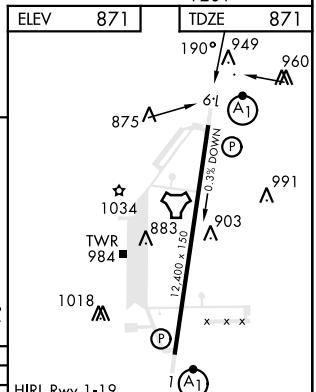
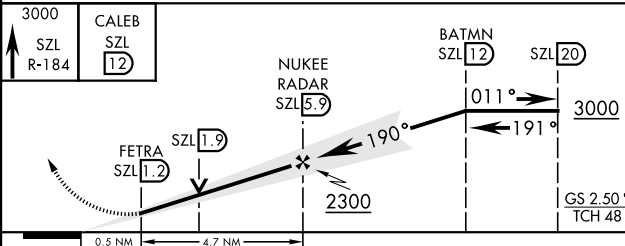
MISSED APPROACH: Climb to 3000 via SZL TACAN R-184 to CALEB and hold.

- * When ALS inop, increase RVR to 40 and vis to 3/4 mile.
- ** When ALS inop, increase RVR to 55 and vis to 1 mile.
- *** Circling not authorized W of Rwy 1-19.

ATIS ★ 118.725 239.025	APP CON ★ 127.45 284.0	TOWER ★ 132.4 318.8	GND CON ★ 119.125 275.8	CLNC DEL ★ 121.75 335.8	ASR
----------------------------------	----------------------------------	-------------------------------	-----------------------------------	-----------------------------------	-----



EMERG SAFE ALT 100 NM 4700



CATEGORY	A	B	C	D	E
S-ILS 19*	1071/24		200	(200-1/2)	
S-LOC 19***	1220/24	349 (400-1/2)	1220/30	349	(400-5%)
CIRCLING	1300-1 429 (500-1)	1340-1 469 (500-1)	1340-1 1/2 469 (500-1 1/2)	1460-2	589 (600-2)

HIRL Rwy 1-19					
FAF to MAP 4.7 NM					
Knots	60	90	120	150	180
Min:Sec	4:42	3:08	2:21	1:53	1:34

KNOB NOSTER, MISSOURI

38°44'N-93°33'W

WHITEMAN AFB (KSZL)

Amtd 1 10OCT19

ILS or LOC Y RWY 19

NC-3, 03 OCT 2024 to 31 OCT 2024

NC-3, 03 OCT 2024 to 31 OCT 2024