

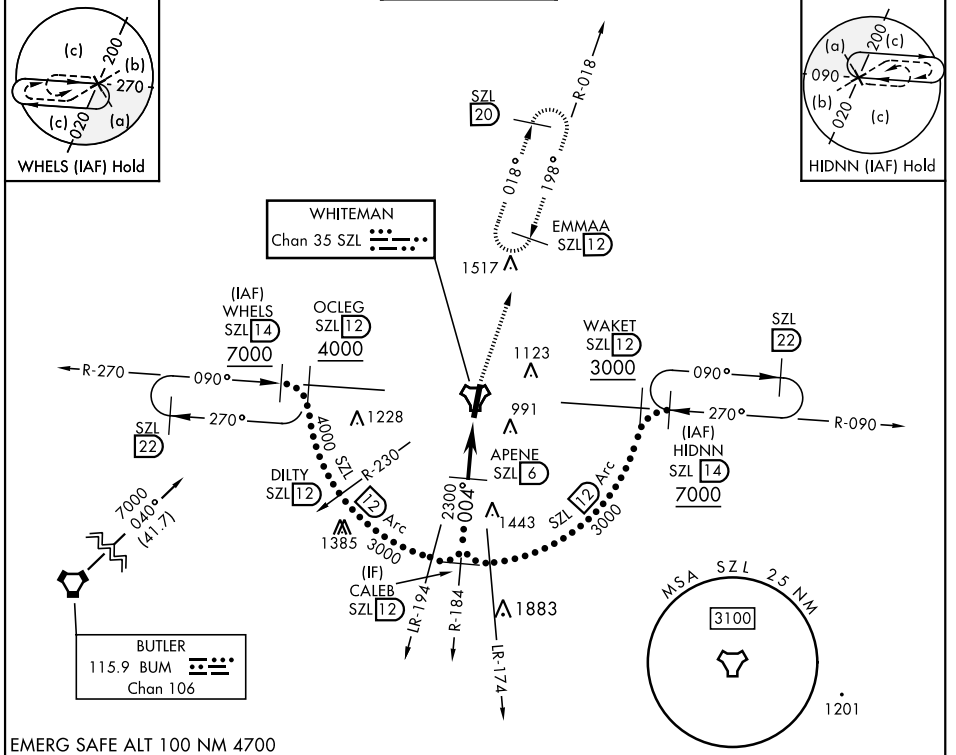
HI-TACAN Z RWY 1

TACAN SZL Chan 35	APCH CRS 004°	Rwy Idg 12,400 TDZE 837 Arprt Elev 871
-----------------------------	-------------------------	---

AL-496 [USAF]

WHITEMAN AFB (KSZL)

▽ * When ALS inop, increase CAT CDE vis to 1½ miles. ** Circling not authorized W of Rwy 1-19.		ALSF-1 	MISSED APPROACH: Climb to 3000 via SZL TACAN R-018 to EMMAA and hold.		
ATIS ★ 118.725 239.025	APP CON ★ 127.45 284.0	TOWER ★ 132.4 318.8	GND CON ★ 119.125 275.8	CLNC DEL ★ 121.75 335.8	ASR



EMERG SAFE ALT 100 NM 4700

		3000 SZL R-018	EMMAA SZL 12	ELEV 871	TDZE 837
	CALEB 12 3000	APENE 6 2300	COBLU 1.8 2.5		
CATEGORY	C	D	E		
S-1 *	1260/40	423 (400-¾)			
CIRCLING **	1340-1½ 469 (500-1½)	1460-2	589 (600-2)	HIRL Rwy 1-19	

HI-TACAN Z RWY 1

NC-3, 31 OCT 2024 to 28 NOV 2024

NC-3, 31 OCT 2024 to 28 NOV 2024