

KNOB NOSTER, MISSOURI

HI-ILS or LOC Z RWY 19

LOC I-MXJ 108.5	APCH CRS 190°	Rwy ldg 12,400 TDZE 871 Arprt Elev 871
---------------------------	-------------------------	---

AL-496 [USAF]

WHITEMAN AFB (KSZL)

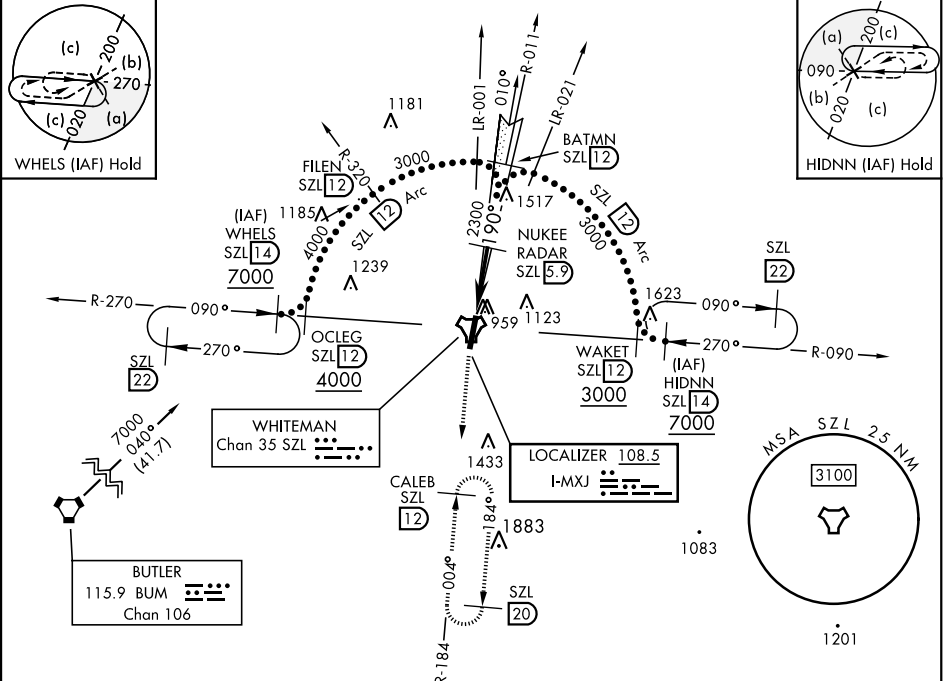
RADAR or DME required.

- ▲ *When ALS inop, increase CAT CDE RVR to 40 and vis to ¾ mile.
- ** When ALS inop, increase CAT CDE RVR to 55 and vis to 1 mile.
- *** Circling not authorized W of Rwy 1-19.



MISSED APPROACH: Climb to 3000 via SZL TACAN R-184 to CALEB and hold.

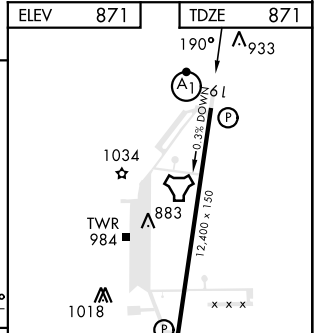
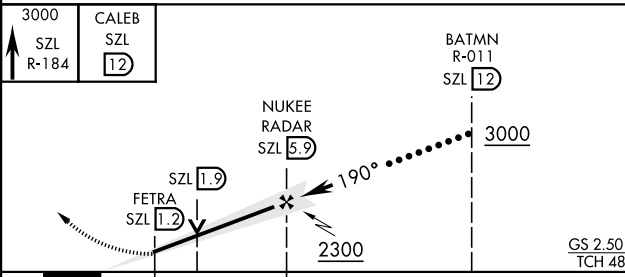
ATIS ★ 118.725 239.025	APP CON ★ 127.45 284.0	TOWER ★ 132.4 318.8	GND CON ★ 119.125 275.8	CLNC DEL ★ 121.75 335.8	ASR
----------------------------------	----------------------------------	-------------------------------	-----------------------------------	-----------------------------------	-----



NC-3, 31 OCT 2024 to 28 NOV 2024

NC-3, 31 OCT 2024 to 28 NOV 2024

EMERG SAFE ALT 100 NM 4700



CATEGORY	C	D	E
S-ILS 19 *	1071/24	200	(200-½)
S-LOC 19 **	1220/30	349	(400-¾)
*** CIRCLING	1340-1½ 469 (500-1½)	1460-2	589 (600-2)

HIRL Rwy 1-19	
FAF to MAP 4.7 NM	
Knots	120 140 160 180 200
Min:Sec	2:21 2:01 1:46 1:34 1:25

KNOB NOSTER, MISSOURI

38°44'N-93°33'W

WHITEMAN AFB (KSZL)

Amtd 1 10OCT19

HI-ILS or LOC Z RWY 19