

HI-ILS or LOC Z RWY 1

LOC I-SZL 110.3	APCH CRS 010°	Rwy Idg 12,400 TDZE 837 Arprt Elev 871
---------------------------	-------------------------	---

AL-496 [USAF]

WHITEMAN AFB (KSZL)

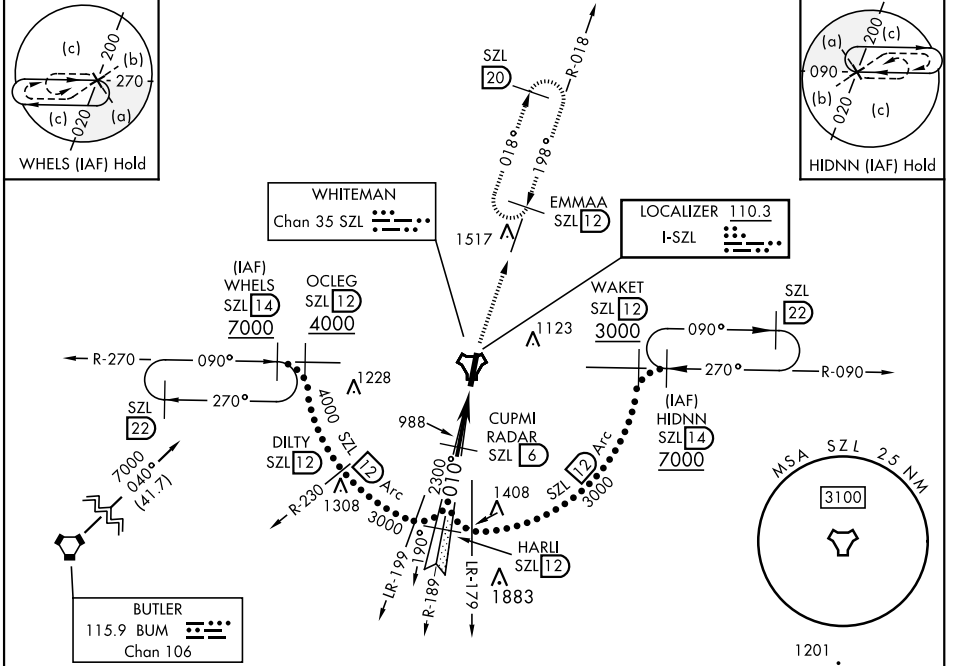
RADAR or DME required.



MISSED APPROACH: Climb to 3000 via SZL TACAN R-018 to EMMAA and hold.

- * When ALS inop, increase CAT CDE RVR to 40 and vis to 3/4 mile.
- ** When ALS inop, increase CAT CDE vis to 1/4 miles.
- *** Circling not authorized W of Rwy 1-19.

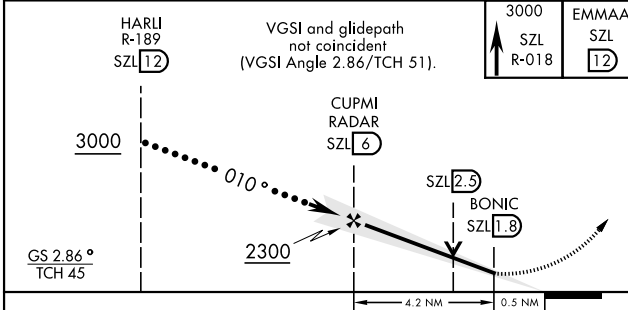
ATIS ★ 118.725 239.025	APP CON ★ 127.45 284.0	TOWER ★ 132.4 318.8	GND CON ★ 119.125 275.8	CLNC DEL ★ 121.75 335.8	ASR
----------------------------------	----------------------------------	-------------------------------	-----------------------------------	-----------------------------------	-----



NC-3, 31 OCT 2024 to 28 NOV 2024

NC-3, 31 OCT 2024 to 28 NOV 2024

EMERG SAFE ALT 100 NM 4700



ELEV 871	TDZE 837
----------	----------

FAF to MAP 4.2 NM					
Knots	120	140	160	180	200
Min:Sec	2:06	1:48	1:35	1:24	1:16

CATEGORY	C	D	E
S-ILS 1*	1037/24	200	(200-1/2)
S-LOC 1**	1260/40	423	(400-3/4)
*** CIRCLING	1340-1 1/2 469 (500-1 1/2)	1460-2	589 (600-2)

HI-ILS or LOC Z RWY 1