

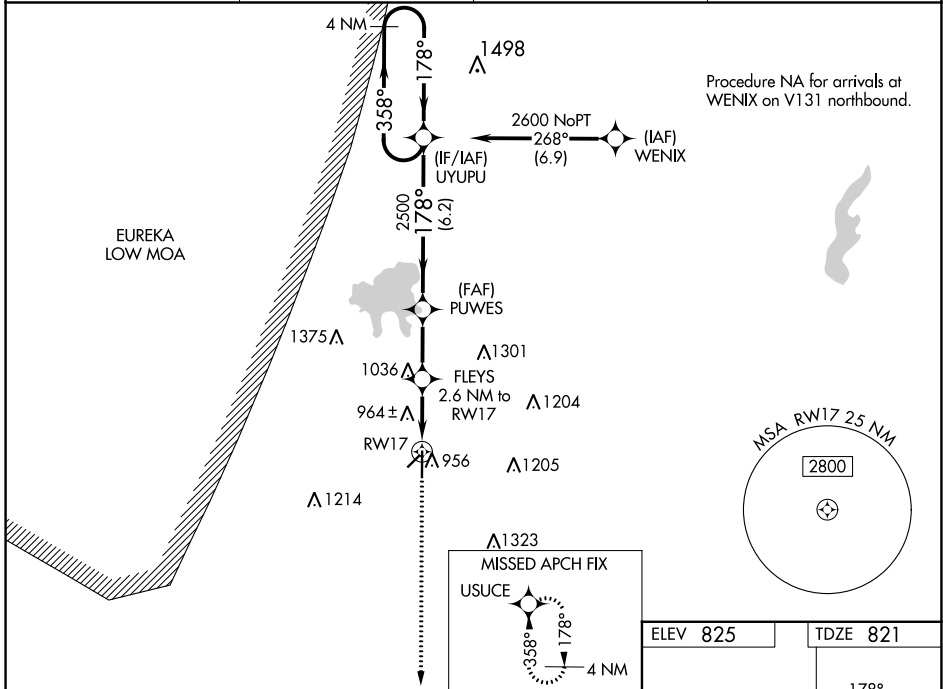
WAAS CH 50338 W17A	APP CRS 178°	Rwy Idg TDZE Apt Elev	5501 821 825
--	------------------------	-----------------------------	---

RNAV (GPS) RWY 17

INDEPENDENCE MUNI (IDP)

RNP APCH.	<p>⚠ For uncompensated Baro-VNAV systems, LNAV/VNAV NA below -1.6°C (4°F) or above 54°C (130°F). Circling Rwy 4, 22 NA at night. Rwy 17 helicopter visibility reduction below 3/4 SM NA.</p>	<p>MISSED APPROACH: Climb to 2600 direct USUCE and hold.</p>
-----------	--	--

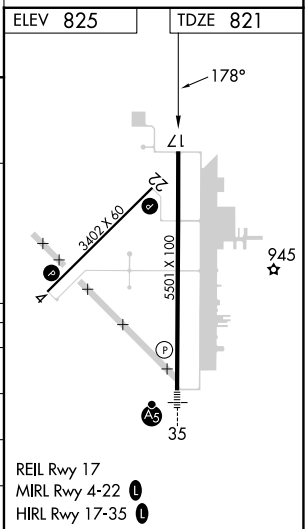
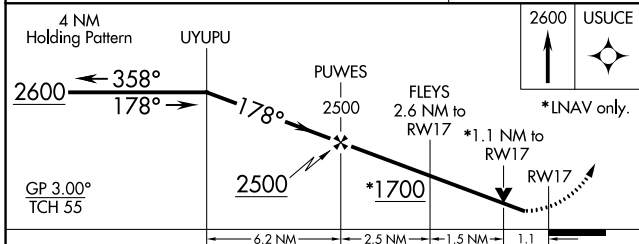
AWOS-3PT 118.525	KANSAS CITY CENTER 128.6 282.325	CLNC DEL 121.65	UNICOM 123.05 (CTAF) 0
----------------------------	--	---------------------------	----------------------------------



Procedure NA for arrivals at WENIX on V131 northbound.

NC-2, 08 AUG 2024 to 05 SEP 2024

NC-2, 08 AUG 2024 to 05 SEP 2024



CATEGORY	A	B	C	D
LPV DA		1021-3/4	200 (200-3/4)	
LNAV/VNAV DA		1076-3/4	255 (300-3/4)	
LNAV MDA	1220-1	399 (400-1)	1220-1 1/8	399 (400-1 1/8)
C CIRCLING	1280-1	455 (500-1)	1340-1 1/2	1680-2 3/4
			515 (600-1 1/2)	855 (900-2 3/4)

REIL Rwy 17
MIRL Rwy 4-22 0
HIRL Rwy 17-35 0