

HOMESTEAD, FLORIDA

RNAV (GPS) RWY 6

APCH CRS	Rwy Idg	11,201
055°	TDZE	5
	Arprt Elev	6

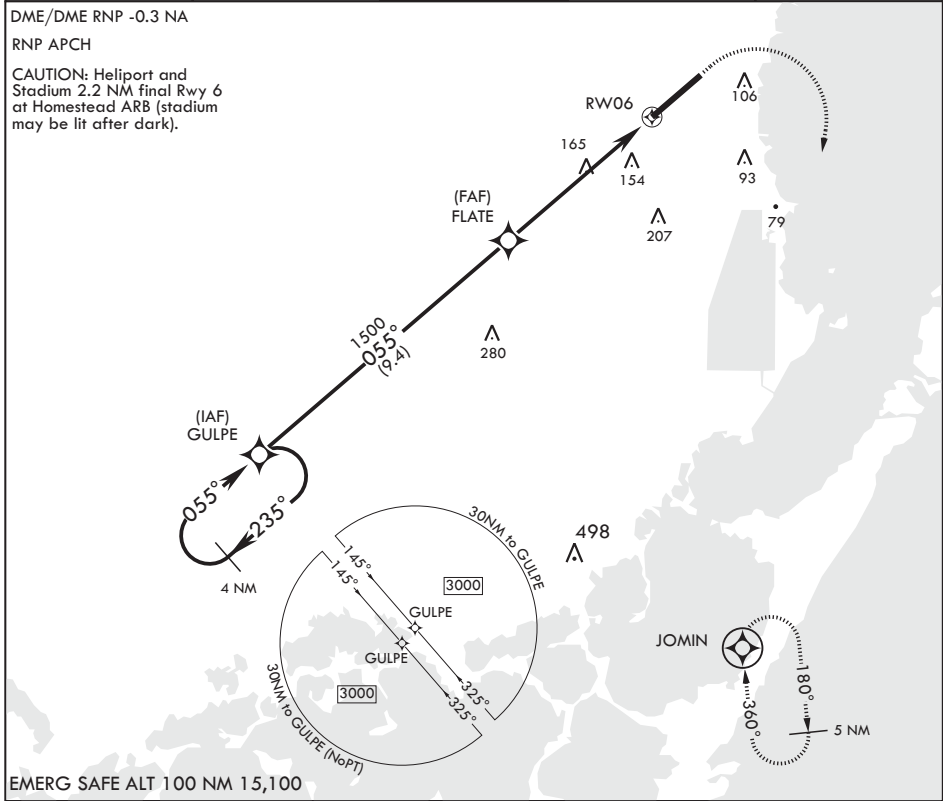
AL-494 (USAF)

HOMESTEAD ARB (KHST)

⚠ * When ALS inop increase CAT AB RVR to 55, vis to 1 mile, CAT CDE vis to 1 3/8 miles.
 ** Circling NA NW of Rwy 6-24.

ALSF-1 MISSED APPROACH: Climb to 800 then climbing right turn to 3000 direct JOMIN and hold.

ATIS* 132.275 269.9	APP CON/DEP CON 123.8 257.675	TOWER 133.45 279.55	GND CON 121.75 275.8	CLNC DEL 121.75 275.8
-------------------------------	---	-------------------------------	--------------------------------	---------------------------------



3000	← 235°	GULPE	→ 055°	FLATE	→ 055°	1.5 NM to RWY06	RWY06	JOMIN	ELEV 6	TDZE 5
2.50' ≥	TCH 54					5.4 NM				

CATEGORY	A	B	C	D	E
LNAV MDA*	460/24	455 (500-1/2)	460/45	455	(500-3/8)
C CIRCLING**	460-1 454 (500-1)	500-1 494 (500-1)	520-1 1/2 514 (600-1 1/2)	580-2 574 (600-2)	780-2 3/4 774 (800-2 3/4)

ⓐ 055° to RWY 06
 HIRL all Rwys

HOMESTEAD, FLORIDA

25°29'N - 80°23'W

HOMESTEAD ARB (KHST)

Amdt 1 13AUG20

RNAV (GPS) RWY 6

SE-3, 31 OCT 2024 to 28 NOV 2024

SE-3, 31 OCT 2024 to 28 NOV 2024