

HI-ILS or LOC Y RWY 6

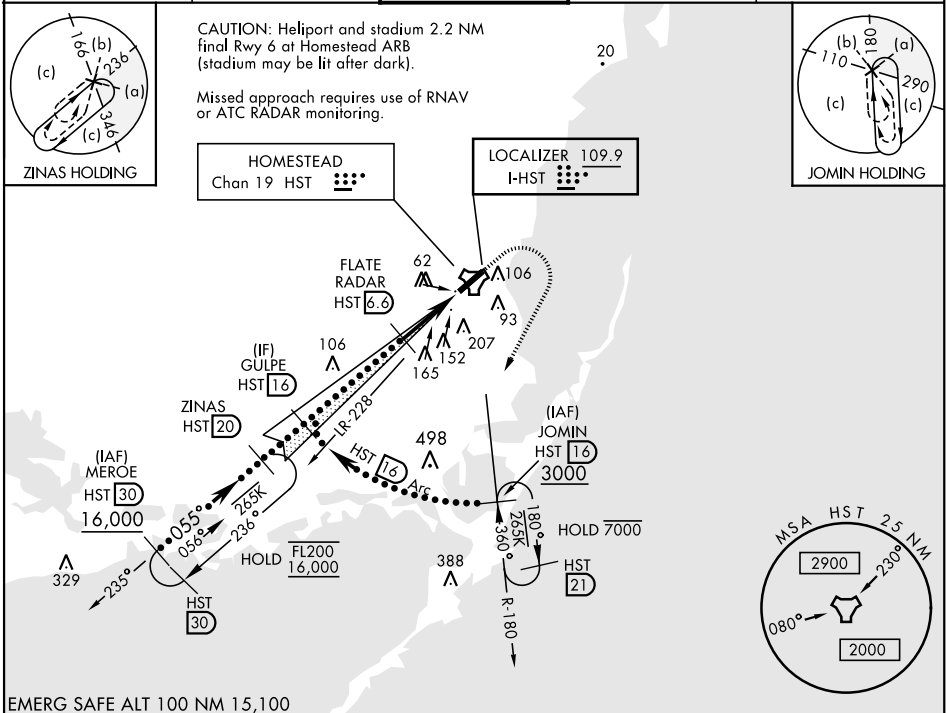
LOC I-HST 109.9	APCH CRS 055°	Rwy ldg 11,201 TDZE 5 Arprt Elev 6
---------------------------	-------------------------	---

AL-494 [USAF]

HOMESTEAD ARB (KHST)

RADAR or DME required.		ALSIF-1 	MISSED APPROACH: Climb to 800 then climbing right turn to 3000 intercept HST TACAN R-180 to JOMIN and hold.
<p>▼ * When ALS inop, increase RVR to 40, vis to 3/4 mile. ** When ALS inop, increase RVR to 60, vis to 1 1/8 miles. *** Circling NA NW of Rwy 6-24.</p>			

ATIS ★ 132.275 269.9	APP CON 123.8 257.675	TOWER 133.45 279.55	GND CON 121.75 275.8	CLNC DEL 121.75 275.8
--------------------------------	---------------------------------	-------------------------------	--------------------------------	---------------------------------



EMERG SAFE ALT 100 NM 15,100

<p>GULPE 16 3000 055° 1500 FLATE RADAR 6.6 TACAN CODMA 1.6 5 NM 0.4 NM</p>		<p>800 3000 HST R-180 JOMIN HST 16</p>	<p>ELEV 6 TDZE 5 HIRL Rwy 6-24</p>												
<p>GS 2.50° TCH 54</p>															
CATEGORY	C	D	E												
S-ILS 6 *	205/24	200 (200-1/2)													
S-LOC 6 **	460/45	455 (500-7/8)													
*** CIRCLING	520-1 1/2 514 (600-1 1/2)	580-2 574 (600-2)	780-2 3/4 774 (800-2 3/4)												
<p>FAF to MAP 5.0 NM</p> <table border="1"> <tr> <td>Knots</td> <td>120</td> <td>140</td> <td>160</td> <td>180</td> <td>200</td> </tr> <tr> <td>Min:Sec</td> <td>2:30</td> <td>2:09</td> <td>1:53</td> <td>1:40</td> <td>1:30</td> </tr> </table>				Knots	120	140	160	180	200	Min:Sec	2:30	2:09	1:53	1:40	1:30
Knots	120	140	160	180	200										
Min:Sec	2:30	2:09	1:53	1:40	1:30										

HI-ILS or LOC Y RWY 6

SE-3, 03 OCT 2024 to 31 OCT 2024

SE-3, 03 OCT 2024 to 31 OCT 2024