

(FLMGO2.FLMGO) 24081

AL-494 (FAA)

HOMESTEAD ARB (KHST)

FLMGO TWO DEPARTURE(RNAV)

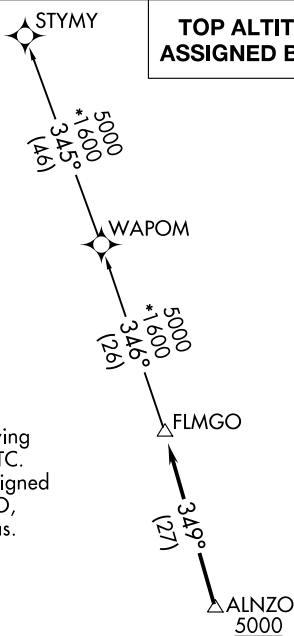
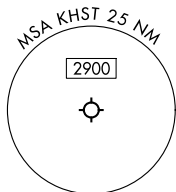
HOMESTEAD, FLORIDA

RNAV 1 - DME/DME/IRU or GPS.

RADAR required.

**TOP ALTITUDE:
ASSIGNED BY ATC**

MIAMI DEP CON
125.5 354.1
ATIS*
132.275 269.9
CLNC DEL
121.75 275.8
GND CON
121.75 275.8
HOMESTEAD TOWER
133.45 279.55

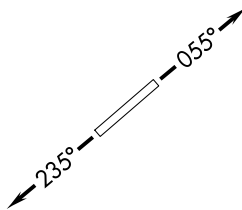


- NOTE: Jet aircraft only.
- NOTE: Accelerate to 250K until leaving 10000, if unable, advise ATC.
- NOTE: WAPOM Transition ATC assigned except aircraft landing: MCO, DAB, and MLB terminal areas.

TAKEOFF MINIMUMS

Rwy 6: Standard with minimum climb of 500'/NM to 1800.

Rwy 24: Standard with minimum climb of 500'/NM to 2200.



NOTE: Chart not to scale.



DEPARTURE ROUTE DESCRIPTION

TAKEOFF RUNWAY 6: Climb on heading 055° or as assigned by ATC for RADAR vectors to cross ALNZO at or above 5000, thence. . . .

TAKEOFF RUNWAY 24: Climb on heading 235° or as assigned by ATC for RADAR vectors to cross ALNZO at or above 5000, thence. . . .

. . . on track 349° to FLMGO, then on assigned transition. Maintain ATC assigned altitude. Expect filed altitude within 10 minutes after departure.

STYMY TRANSITION (FLMGO2.STYMY)

WAPOM TRANSITION (FLMGO2.WAPOM)

FLMGO TWO DEPARTURE(RNAV)

(FLMGO2.FLMGO) 21MAR24

HOMESTEAD, FLORIDA
HOMESTEAD ARB (KHST)

SE-3, 03 OCT 2024 to 31 OCT 2024

SE-3, 03 OCT 2024 to 31 OCT 2024