

(DORRL2.DORRL) 24081

AL-494 (FAA)

HOMESTEAD ARB (KHST)
HOMESTEAD, FLORIDA

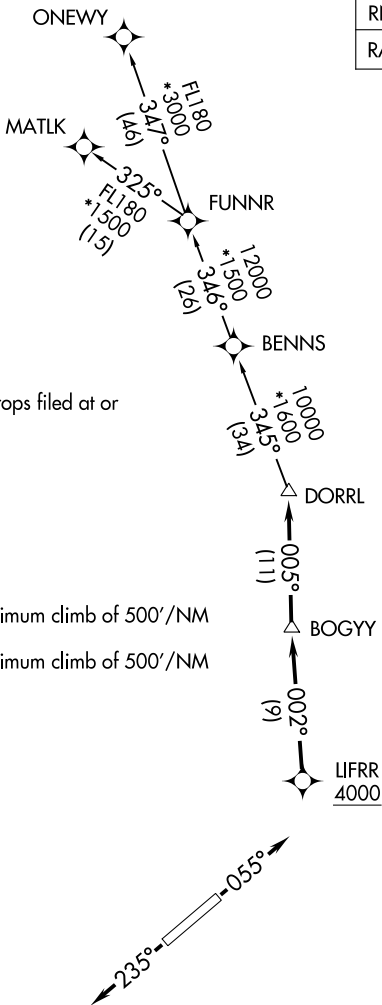
DORRL TWO DEPARTURE (RNAV)

MIAMI DEP CON
125.5 354.1
ATIS ★
132.275 269.9
CLNC DEL
121.75 275.8
GND CON
121.75 275.8
HOMESTEAD TOWER
133.45 279.55

RNAV 1 - DME/DME/IRU or GPS.

RADAR required.

**TOP ALTITUDE:
ASSIGNED BY ATC**

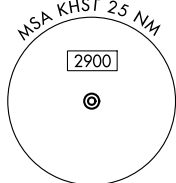


NOTE: For turbo-props/props filed at or above 13000.

TAKEOFF MINIMUMS

Rwy 6: Standard with minimum climb of 500'/NM to 1800.

Rwy 24: Standard with minimum climb of 500'/NM to 2200.



NOTE: Chart not to scale.



DEPARTURE ROUTE DESCRIPTION

TAKEOFF RUNWAY 6: Climb on heading 055° or as assigned by ATC for RADAR vectors to cross LIFRR at or above 4000, thence. . . .

TAKEOFF RUNWAY 24: Climb on heading 235° or as assigned by ATC for RADAR vectors to cross LIFRR at or above 4000, thence. . . .

. . . on track 002° to BOGY, then on track 005° to DORRL then on (transition), maintain altitude as assigned by ATC, expect filed altitude 10 minutes after departure.

MATLK TRANSITION (DORRL2.MATLK)

ONEWY TRANSITION (DORRL2.ONEWY)

DORRL TWO DEPARTURE (RNAV)

(DORRL2.DORRL) 21MAR24

HOMESTEAD, FLORIDA
HOMESTEAD ARB (KHST)

SE-3, 31 OCT 2024 to 28 NOV 2024

SE-3, 31 OCT 2024 to 28 NOV 2024