

VORTAC RSK <b>115.3</b> Chan <b>100</b>	APP CRS <b>252°</b>	Rwy Idg TDZE <b>5507</b> Apt Elev <b>5507</b>
---	------------------------	---

# VOR RWY 25

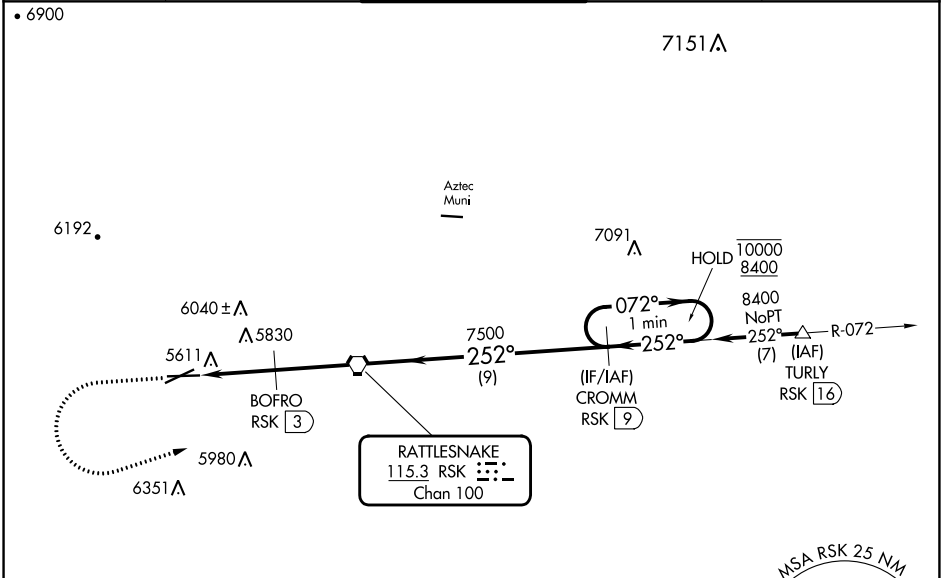
FOUR CORNERS RGNL (FMN)

DME required.

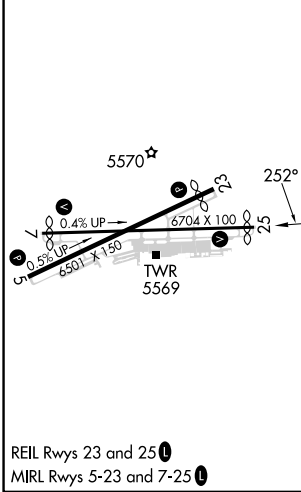
**⚠** VDP NA when using Durango-La Plata County altimeter setting. Circling NA for Cat D southeast of Rwy 5 and south of Rwy 25. When local altimeter setting not received, use Durango-La Plata County altimeter setting and increase all MDAs 260 feet; increase S-25 visibility Cat B/C/D 7/8 SM and Circling visibility Cat A/B/C 1/2 SM.

MISSED APPROACH: Climb to 7100 then climbing left turn to 8400 on heading 060° and on RSK VORTAC R-072 to CROMM/9 DME and hold.

ATIS <b>127.15</b>	DENVER CENTER <b>118.575 348.7</b>	FARMINGTON TOWER★ <b>118.9 (CTAF) 0 257.8</b>	GND CON <b>121.7</b>	UNICOM <b>122.95</b>
-----------------------	---------------------------------------	--	-------------------------	-------------------------



ELEV <b>5507</b>	<b>D</b>	TDZE <b>5507</b>
------------------	----------	------------------



7100	8400	RSK R-072	CROMM RSK 9	CROMM RSK 9	One Minute Holding Pattern
hdg 060°					
RSK 5.8	RSK 4.1	BOFRO RSK 3	RSK VORTAC	072° → 10000	← 252° 8400
		3.18° TCH 56			
		6500	7500		
		-1.6 NM	-1.2	3 NM	9 NM
CATEGORY	A	B	C	D	
S-25	6080-1	573 (600-1)	6080-1½	573 (600-1½)	
CIRCLING	6080-1	6140-1	6380-2½	6460-3	
	573 (600-1)	633 (700-1)	873 (900-2½)	953 (1000-3)	

SW-1, 31 OCT 2024 to 28 NOV 2024

SW-1, 31 OCT 2024 to 28 NOV 2024