

WAAS CH 70714 W23A	APP CRS 233°	Rwy Idg TDZE Apt Elev	5590 5505 5507
--	------------------------	-----------------------------	---

RNAV (GPS) RWY 23

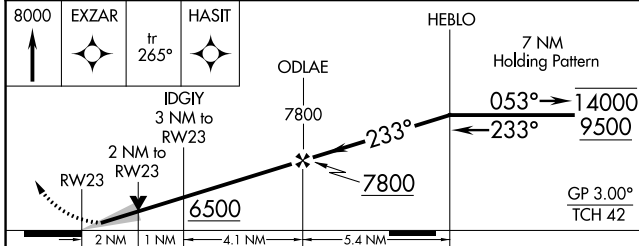
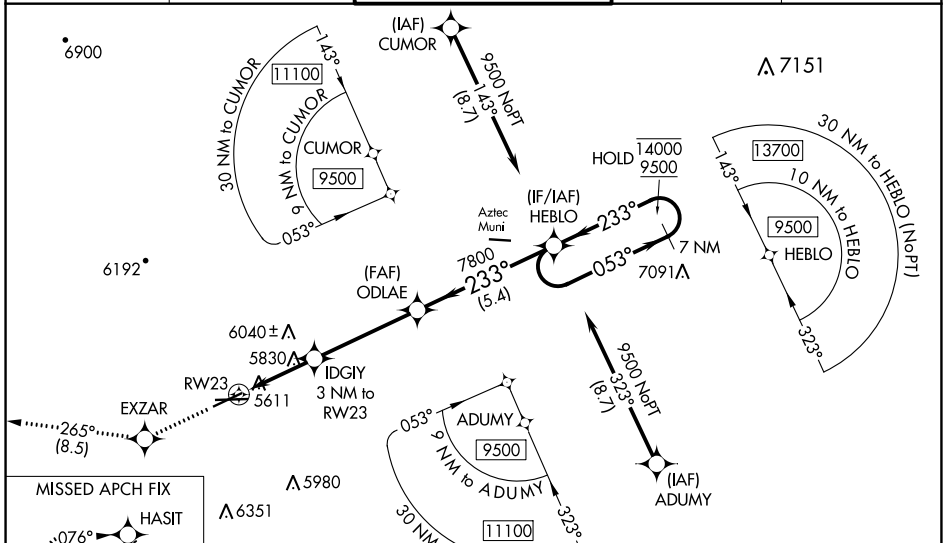
FOUR CORNERS RGNL (FMN)

RNP APCH - GPS.

⚠ Baro-VNAV and VDP NA when using Durango altimeter setting. For uncompensated Baro-VNAV systems, LNAV/VNAV NA below -16°C or above 54°C. Circling NA for Cat D southeast of Rwy 5 and south of Rwy 25. When local altimeter setting not received, use Durango altimeter setting and increase LPV DA to 5998 feet and all visibilities $\frac{1}{2}$ SM. Increase LNAV/VNAV DA to 6274 feet and all visibilities 1 SM. Increase all MDAs 260 feet and LNAV visibilities Cat B $\frac{1}{4}$ SM, C/D $\frac{1}{2}$ SM and Circling visibility Cat A/B $\frac{1}{4}$ SM and Cat C $\frac{1}{2}$ SM.

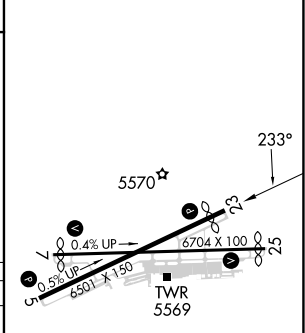
MISSED APPROACH: Climb to 8000 direct EXZAR and on track 265° to HASIT and hold.

ATIS 127.15	DENVER CENTER 118.575 348.7	FARMINGTON TOWER* 118.9 (CTAF) 257.8	GND CON 121.7	UNICOM 122.95
-----------------------	---------------------------------------	--	-------------------------	-------------------------



ELEV 5507	TDZE 5505
-----------	-----------

CATEGORY	A	B	C	D
LPV DA	5755- $\frac{3}{4}$		250 (300- $\frac{3}{4}$)	
LNAV/VNAV DA	6031-1 $\frac{1}{2}$		526 (600-1 $\frac{1}{2}$)	
LNAV MDA	6080-1 575 (600-1)		6080-1 $\frac{5}{8}$ 575 (600-1 $\frac{5}{8}$)	
CIRCLING	6100-1 593 (600-1)	6140-1 633 (700-1)	6380-2 $\frac{1}{2}$ 873 (900-2 $\frac{1}{2}$)	6400-3 893 (900-3)



REIL Rwy 23 and 25
MIRL Rwy 5-23 and 7-25

SW-1, 31 OCT 2024 to 28 NOV 2024

SW-1, 31 OCT 2024 to 28 NOV 2024