

LOC I-TCL <b>109.1</b> Chan 28	APP CRS <b>041°</b>	Rwy Idg <b>6498</b> TDZE <b>160</b> Apt Elev <b>170</b>
--------------------------------------	------------------------	---

# ILS or LOC RWY 4

TUSCALOOSA NTL (TCL)

RNP APCH - GPS. From ALICE, TIEDD or ROWLL.

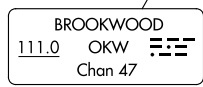
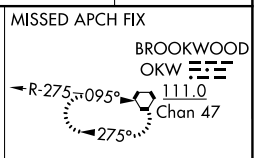
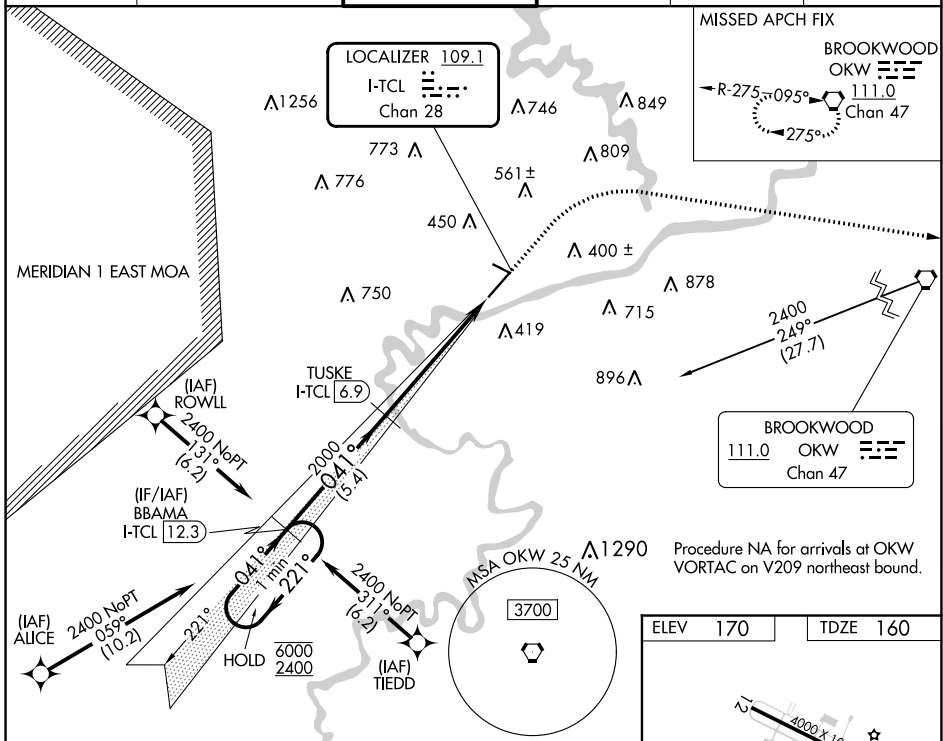
DME required.



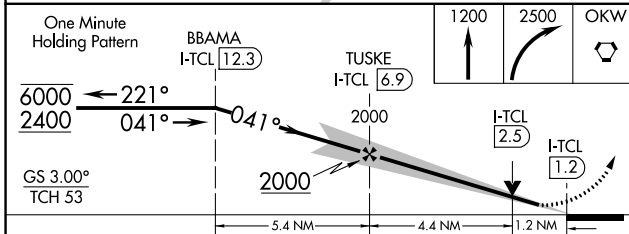
MISSED APPROACH: Climb to 1200 then climbing right turn to 2500 direct OKW VORTAC and hold.

**⚠** Circling Rwy 12, 30 NA at night.

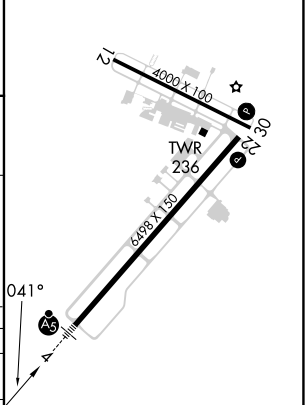
ASOS <b>132.825</b>	BIRMINGHAM APP CON <b>120.15 269.25</b>	TUSCALOOSA TOWER ★ <b>126.3</b> (CTAF) <b>0 256.7</b>	GND CON <b>121.8 257.95</b>	CLNC DEL <b>120.775</b>	UNICOM <b>122.95</b>
------------------------	--	--	--------------------------------	----------------------------	-------------------------



Procedure NA for arrivals at OKW VORTAC on V209 northeast bound.



ELEV 170	TDZE 160
----------	----------



CATEGORY	A	B	C	D
S-ILS 4		360-1/2	200 (200-1/2)	
S-LOC 4	600-1/2	440 (500-1/2)	600-3/4	440 (500-3/4)
<b>C</b> CIRCLING	720-1 550 (600-1)	800-1 630 (700-1)	960-2 1/4 790 (800-2 1/4)	960-2 1/2 790 (800-2 1/2)

MIRL Rwy 12-30  
HIRL Rwy 4-22 **0**

SE-4, 03 OCT 2024 to 31 OCT 2024

SE-4, 03 OCT 2024 to 31 OCT 2024