

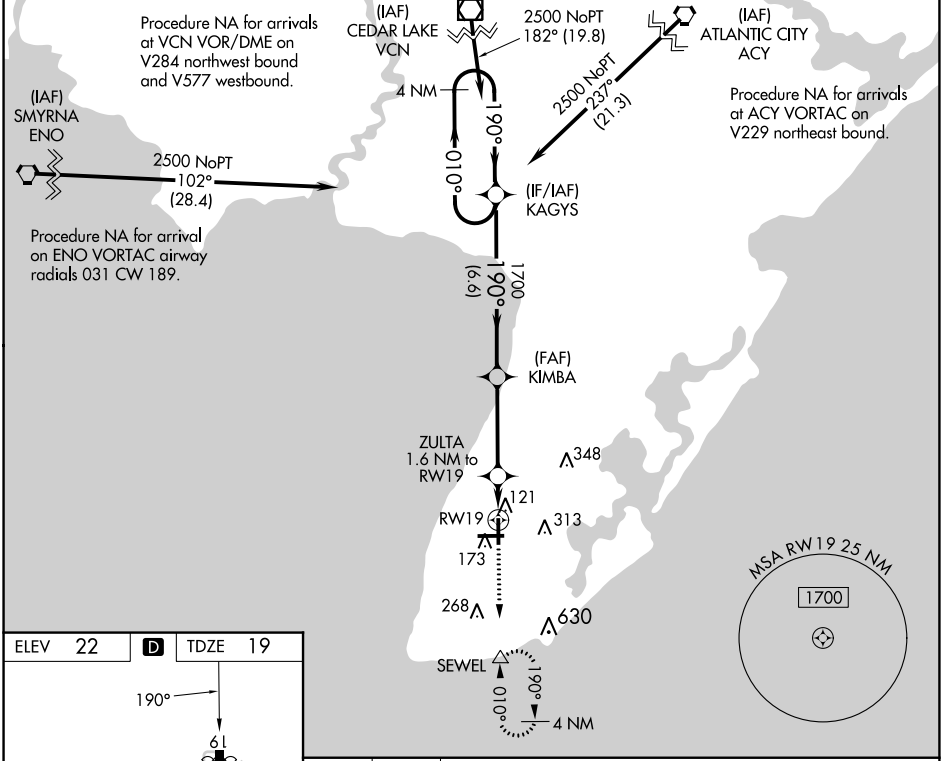
WAAS CH 82400 W19A	APP CRS 190°	Rwy lgt 5036 TDZE 19 Apt Elev 22
--	------------------------	---

RNAV (GPS) RWY 19

CAPE MAY COUNTY (WWD)

RNP APCH.	MISSED APPROACH: Climb to 2500 direct SEWEL and hold, continue climb-in-hold to 2500.
<p>▼ For uncompensated Baro-VNAV systems, LNAV/VNAV NA below -8°C or above 54°C.</p> <p>▲ Circling NA for Cats C and D NE of Rwy 19 and 28. Rwy 19 helicopter visibility reduction below 1 SM NA. Circling Rwy 1 NA at night.</p>	

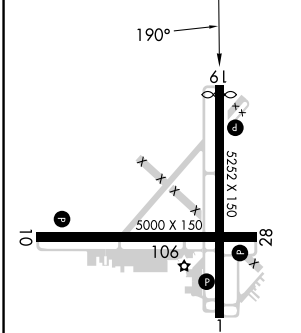
AWOS-3PT 118.275	ATLANTIC CITY APP CON 124.6 327.125	CLNC DEL 121.7	UNICOM 122.7 (CTAF) 0
----------------------------	---	--------------------------	---------------------------------



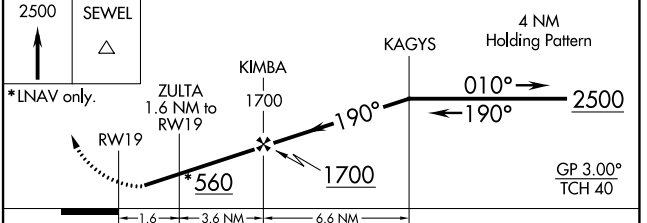
NE-2, 03 OCT 2024 to 31 OCT 2024

NE-2, 03 OCT 2024 to 31 OCT 2024

ELEV 22	D	TDZE 19
---------	----------	---------



MIRL Rwy 10-28 0
HIRL Rwy 1-19 0



CATEGORY	A	B	C	D
LPV DA	269-1 250 (300-1)			
LNAV/VNAV DA	392-1¼ 373 (400-1¼)			
LNAV MDA	380-1 361 (400-1)			
C CIRCLING	480-1 458 (500-1)	620-1 598 (600-1)	620-1½ 598 (600-1½)	980-3 958 (1000-3)