

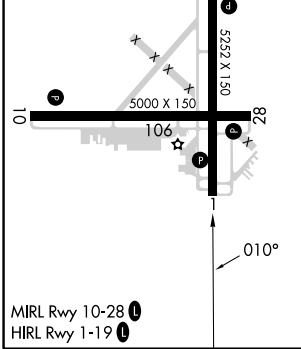
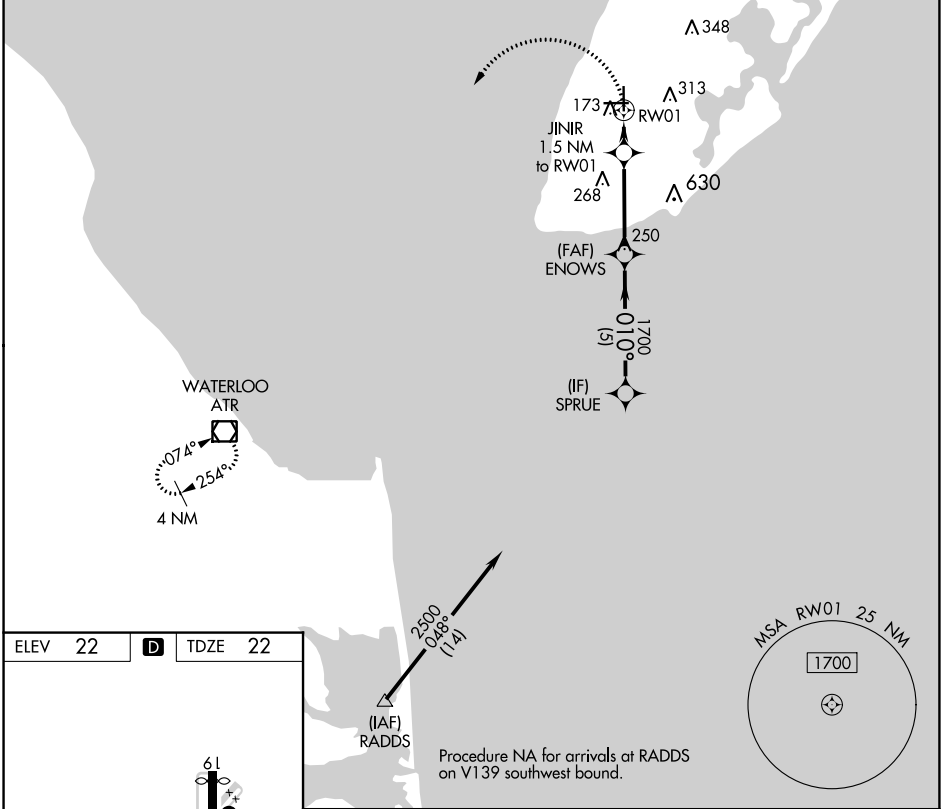
APP CRS 010°	Rwy Idg 5036 TDZE 22 Apt Elev 22
------------------------	---

RNAV (GPS) RWY 1

CAPE MAY COUNTY (WWD)

RNP APCH.	<p>▼ Circling NA for Cats C and D NE of Rws 19 and 28. Rwy 1 helicopter visibility reduction below 1 SM NA. Straight-in Rwy 1 NA at night, Circling Rwy 1 NA at night.</p>	<p>MISSED APPROACH: Climbing left turn to 3000 direct ATR VOR/DME and hold.</p>
-----------	---	---

AWOS-3PT 118.275	ATLANTIC CITY APP CON 124.6 327.125	CLNC DEL 121.7	UNICOM 122.7 (CTAF) 0
----------------------------	---	--------------------------	---------------------------------



ELEV 22	D	TDZE 22
3000	ATR	SPRUE
<p>Procedure NA for arrivals at RADD5 on V139 southwest bound.</p>		
<p>MSA RWY 1 25 NM</p>		
<p>JINIR 1.5 NM to RWY 1</p>		
<p>ENOWS</p>		
<p>RWY 1</p>		
<p>1700</p>		
<p>2500</p>		
<p>1.5 NM 3.6 NM 5 NM</p>		
CATEGORY	A	B
LNAV MDA	440-1 418 (500-1)	440-1½ 418 (500-1½)
C CIRCLING	480-1 458 (500-1)	620-1 598 (600-1)
	620-1½ 598 (600-1½)	980-3 958 (1000-3)

NE-2, 03 OCT 2024 to 31 OCT 2024

NE-2, 03 OCT 2024 to 31 OCT 2024